



26th IHF Women's World Championship

Denmark • Norway • Sweden

Final Round, 27-28. place



Match Team Statistics

Match No. 103

P.R. of China 25 - 26 Chile

(13 - 15) (12 - 11)

13.12.2023. 18:00

Attendance: 103

Arena Nord

Referees: Heidy Elsaied (EGY) / Yasmina Elsaied (EGY)

P.R. of China

Players		Goals / shots										Attack				Def.			Penalties				TP		
#	Surname and name	S	Tot.	%	9m	6m	Wing	7m	FB	Brk.	LD	As.	PC	E7	E2	TF	St.	C7	Blk	YC	2m	R		B	
1	LU Chang	S															1								39:03
5	WANG Jiayi																								
9	JIANG Yishan																								
11	LIU Chan	S	1/8	13	0/3	0/1			0/1	1/3		3			1	3									44:59
12	LI Xiaoqing	S	8/11	73	2/5	2/2				4/4		2	1	1	1				1						60:00
13	ZHAO Xinyao											1					1								21:42
14	ZHOU Mengxue																								
17	HU Yunuo																								15:41
18	WEI Nana		0/1	0	0/1																				2:00
21	ZHANG Guisi		1/1	100		1/1													1						14:08
22	MA Jie														1								1		15:11
23	ZHUANG Hongyan	S	3/3	100			1/1		1/1	1/1		1			1	1	1	1					1		46:31
27	GONG Lei	S	2/4	50		2/4						2			1	2	1	3				3			52:09
28	LIU Xuedan																								
34	JIN Mengqing	S	6/8	75	1/2			2/2	1/1	2/2	0/1	5	4	1	1	4	1	1							59:59
53	LIU Yuting	S	4/5	80			3/4		1/1										1					1	48:29
	Team / bench																				1	1			
	UKUPNO		25/41	61	3/11	5/8	4/5	2/2	3/4	8/10	0/1	13	6	2	4	13	2	6	4	1	8	0	0		

Goalkeepers		Saves / shots									
#	Surname and name	Tot.	%	9m	6m	Wing	7m	FB	Brk.	LD	
1	LU Chang	9/28	32	6/13	1/7	2/3	0/2		0/3		
17	HU Yunuo	4/11	36	0/3	0/1	1/2	3/3		0/2		
	TOTAL	13/39	33	6/16	1/8	3/5	3/5	0/0	0/5	0/0	

Coach: Yongli Zheng

Number of attacks: 52, Efficiency: 48%, Average Duration: 26.85 seconds

Attack by type of defense

	Shots	9m	6m	Wing	TF	E7	E2
On def. 6-0	10/16	1/5	3/4	1/1	7	0	2
On def. 5-1	4/8	1/3	1/2	2/2	4	0	1
On def. 4-2	6/8	1/1	1/2	1/2	2	2	1
On def. 3-3	0/1	0/1	0/0	0/0	0	0	0
Fastbreak	3/4				0	0	0

Defense by type

	Total	9m	6m	Wing	Stl.	C7	2m
Def. 6-0	22/40	9/21	6/7	2/6	2	5	0
Def. 5-1	2/4	1/2	1/2	0/0	0	1	0
Fastbreak	0/0				0	0	8

Attack with superiority / minority / goalkeeper out

	Attack				Reaction		
	Att.	Eff.	Shots	TF	FB	LD	Tot.
7 on 6 (GK out)	3	67%	2/3	0	0/0	0/0	0/0
6 on 6 (GK out)	5	60%	3/5	0	0/0	0/0	0/0
6 on 6	32	53%	17/23	9			
6 on 5	7	43%	3/4	3			
5 on 6	5	0%	0/4	1			

Player superiority / GK out counted at the end of attack (in case it changes during attack)

Defense with superiority / minority / goalkeeper out

	Attack				Reaction		
	Att.	Eff.	Shots	TF	FB	LD	Tot.
7 on 6 (GK out)	1	0%	0/0	1	0/0	0/1	0/1
6 on 6	30	57%	17/25	5			
5 on 6	6	17%	1/5	1			
6 on 5	14	57%	8/11	3			
6 on 4	1	0%	0/1	0			

Numbers show attacking numbers of opponent. Lower efficiency of opponent means better defense of this team

Jersey number Tot. Total shooting 6m 6m (line) shooting 9m 9m shooting Wng Wing shooting FB Fastbreak sh. 7m 7m penalty sh.
 Brk. Breakthrough sh. LD Long distance sh. As. Assists PC Pass clear chance E7 Earned 7m pen. TF Technical faults St. Steals
 2m 2m punishments C7. Committed 7m E2 Earned 2m pun. YC. Yellow cards R/B Red/Blue cards Blk. Blocks S Starting Line-up



26th IHF Women's World Championship

Denmark • Norway • Sweden

Final Round, 27-28. place



Match Team Statistics

Match No. 103

P.R. of China 25 - 26 Chile

(13 - 15) (12 - 11)

13.12.2023. 18:00

Attendance: 103

Arena Nord

Referees: Heidy Elsaied (EGY) / Yasmina Elsaied (EGY)

Shot distribution by player

5 J. Wang	9 Y. Jiang	11 C. Liu	12 X. Li	13 X. Zhao	14 M. Zhou	18 N. Wei
		1/1 0/2				
		0/1 0/1	2/2 0/1			
		0/1	1/1 1/2 2/2			0/1
		1 post 1 miss.	1 post			
21 G. Zhang	22 J. Ma	23 H. Zhuang	27 L. Gong	28 X. Liu	34 M. Jin	53 Y. Liu
			0/1		1/1 1/1	
			0/1		2/2 0/1 1/2	
1/1					1/1	2/2 1/1
		3/3 lob				1/2 lob

TOTAL

2/3		3/5
4/6	0/2	1/3
4/5	2/3	5/6

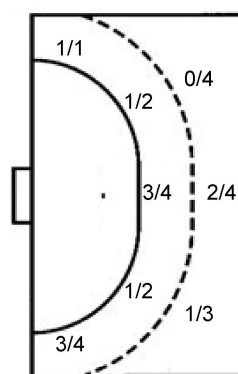
2 post 1 miss. 4/5 lob

Saves distribution goalkeepers

1 C. Lu	17 Y. Hu	TOTAL
0/5		0/5
1/2		2/5
2/6	3/4 1/8	3/10 3/5 2/9
	1/3 1/1	
	1/4 0/1 1/1	

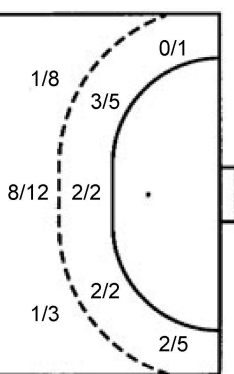
Shots by position

ATTACK



7m penalties	2/2
Fastbreak	3/4
Breakthrough	8/10
Long dist.	0/1

DEFENSE



7m penalties	2/6
Fastbreak	0/0
Breakthrough	5/6
Long dist.	0/0

Shooting statistics

Position	Goals	Sav.	Miss.	Post	Blk.	Total	%
Back (9m)	3	6	1	1	0	11	27
Line (6m)	5	2	0	1	0	8	63
Wing	4	1	0	0	0	5	80
7m penalties	2	0	0	0	0	2	100
Fastbreak	3	1	0	0	0	4	75
Breakthrough	8	2	0	0	0	10	80
Total	25	12	1	2	0	40	63

Jersey number Tot. Total shooting 6m 6m (line) shooting 9m 9m shooting Wng Wing shooting FB Fastbreak sh. 7m 7m penalty sh.
 Brk. Breakthrough sh. LD Long distance sh. As. Assists PC Pass clear chance E7 Earned 7m pen. TF Technical faults St. Steals
 2m 2m punishments C7. Committed 7m E2 Earned 2m pun. YC. Yellow cards R/B Red/Blue cards Blk. Blocks S Starting Line-up



26th IHF Women's World Championship

Denmark • Norway • Sweden

Final Round, 27-28. place



Match Team Statistics

Match No. 103

P.R. of China 25 - 26 Chile

(13 - 15) (12 - 11)

13.12.2023. 18:00

Attendance: 103

Arena Nord

Referees: Heidy Elsaied (EGY) / Yasmina Elsaied (EGY)

Chile

Players		Goals / shots									Attack					Def.			Penalties				TP		
#	Surname and name	S	Tot.	%	9m	6m	Wing	7m	FB	Brk.	LD	As.	PC	E7	E2	TF	St.	C7	Blk	YC	2m	R	B		
4	PAUL Constanza		2/5	40	1/2		1/2	0/1					1	1			1	1							21:10
5	RAMIREZ MUNOZ Romina Antonia	S	1/1	100		1/1						2				1	2								54:33
6	LOVERA SALAS Valeska Andrea	S	5/11	45	3/7	0/1		2/3				2	2		1	3					2				45:18
7	MÜLLER RUIZ Gabriela Belén	S	1/2	50			1/2							1	1		1	1							49:19
8	ARAYA SALFATE Josefa Ignacia	S	2/8	25	2/6	0/1		0/1				3	1	1		2									44:38
9	GALVEZ Catalina		0/1	0	0/1											1									3:27
10	PARRA PARRA Francisca Andrea	S	4/7	57	1/3			0/1		3/3		2			1							2			24:06
14	MORENO CORDOVA Catalina Francisca		2/2	100		2/2											1								25:43
16	TORRES LARA Alicia Ignacia	S	4/4	100		4/4								3	3	1									29:15
17	PACHECO CORTÉS Pía Victoria																								21:07
18	CORREA VERGARA Maria Elena		1/1	100	1/1											1									3:47
19	PIANTINI AVENDANO Antonella Valentina	S																							30:46
22	ÁLVAREZ GYLLEN Maura Andrea		1/3	33	1/2		0/1								1										5:27
23	CORTEZ FUENZALIDA Madeleine Noelia																								27:41
28	CARRASCO Valeria		3/4	75	1/1					2/3		1	1												30:01
30	BOCCHIERI RAMIREZ Michaela Paz		0/1	0			0/1																		3:42
Team / bench																1									
UKUPNO			26/50	52	10/23	7/9	2/6	2/6	0/0	5/6	0/0	10	5	6	7	10	5	2	0	0	4	0	0		

Goalkeepers		Saves / shots									
#	Surname and name	Tot.	%	9m	6m	Wing	7m	FB	Brk.	LD	
19	PIANTINI AVENDANO Antonella Valentina	4/21	19	2/5	1/3	0/4	0/1	0/2	1/6		
23	CORTEZ FUENZALIDA Madeleine Noelia	9/17	53	4/4	1/4	1/1	0/1	1/2	1/4	1/1	
TOTAL		13/38	34	6/9	2/7	1/5	0/2	1/4	2/10	1/1	

Coach: Felipe Barrientos

Number of attacks: 52, Efficiency: 50%, Average Duration: 42.38 seconds

Attack by type of defense

	Shots	9m	6m	Wing	TF	E7	E2
On def. 6-0	22/40	9/21	6/7	2/6	9	5	6
On def. 5-1	2/4	1/2	1/2	0/0	1	1	1
Fastbreak	0/0				0	0	0

Defense by type

	Total	9m	6m	Wing	Stl.	C7	2m
Def. 6-0	10/16	1/5	3/4	1/1	3	0	0
Def. 5-1	4/8	1/3	1/2	2/2	0	0	0
Def. 4-2	6/8	1/1	1/2	1/2	2	2	0
Def. 3-3	0/1	0/1	0/0	0/0	0	0	0
Fastbreak	3/4				0	0	4

Attack with superiority / minority / goalkeeper out

	Attack				Reaction		
	Att.	Eff.	Shots	TF	FB	LD	Tot.
7 on 6 (GK out)	1	0%	0/0	1	0/0	0/1	0/1
6 on 6	30	57%	17/25	5			
5 on 6	6	17%	1/5	1			
6 on 5	14	57%	8/11	3			
6 on 4	1	0%	0/1	0			

Player superiority / GK out counted at the end of attack (in case it changes during attack)

Defense with superiority / minority / goalkeeper out

	Attack				Reaction		
	Att.	Eff.	Shots	TF	FB	LD	Tot.
7 on 6 (GK out)	3	67%	2/3	0	0/0	0/0	0/0
6 on 6 (GK out)	5	60%	3/5	0	0/0	0/0	0/0
6 on 6	32	53%	17/23	9			
6 on 5	7	43%	3/4	3			
5 on 6	5	0%	0/4	1			

Numbers show attacking numbers of opponent. Lower efficiency of opponent means better defense of this team

Jersey number Tot. Total shooting 6m 6m (line) shooting 9m 9m shooting Wng Wing shooting FB Fastbreak sh. 7m 7m penalty sh.
 Brk. Breakthrough sh. LD Long distance sh. As. Assists PC Pass clear chance E7 Earned 7m pen. TF Technical faults St. Steals
 2m 2m punishments C7. Committed 7m E2 Earned 2m pun. YC. Yellow cards R/B Red/Blue cards Blk. Blocks S Starting Line-up



26th IHF Women's World Championship

Denmark • Norway • Sweden

Final Round, 27-28. place



Match Team Statistics

Match No. 103

P.R. of China 25 - 26 Chile

(13 - 15) (12 - 11)

13.12.2023. 18:00

Attendance: 103

Arena Nord

Referees: Heidy Elsaied (EGY) / Yasmina Elsaied (EGY)

Shot distribution by player

4 C. Paul	5 R. Ramirez Munoz	6 V. Lovera Salas	7 G. Müller Ruiz	8 J. Araya Salfate	9 C. Galvez	10 F. Parra Parra
0/1	1/1		1/1	1/1		
1/2		1/1		0/1		
1/1		2/2 1/3 1/2		1/1 0/1 0/1		1/2 1/1 1/1
		2 post 1 block	1 post	2 post 1 block	1 miss.	2 block 1/1 lob
14 C. Moreno Córdova	16 A. Torres Lara	17 P. Pacheco Cortés	18 M. Correa Vergara	22 M. Álvarez Gyllen	28 V. Carrasco	30 M. Bocchieri Ramirez
				1/1	2/2	
1/1						
	1/1		1/1	0/2	1/1	0/1
					1 post	

TOTAL

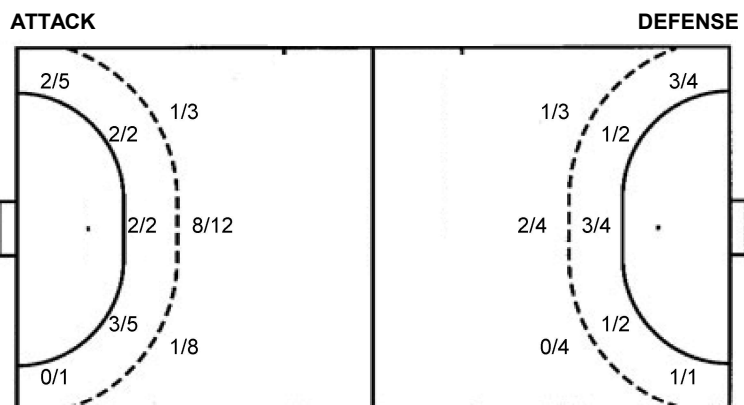
5/5		1/2
3/5		0/2
7/10	2/5	7/9

6 post 1 miss. 4 block 1/1 lob

Saves distribution goalkeepers

19 A. Piantini Avendano	23 M. Cortez Fuenzalida	TOTAL
1/2	0/1	1/3
0/4	2/2	2/2
1/3	0/2	1/3
	1/1	2/3
	1/2	1/6

Shots by position



7m penalties	2/6	7m penalties	2/2
Fastbreak	0/0	Fastbreak	3/4
Breakthrough	5/6	Breakthrough	8/10
Long dist.	0/0	Long dist.	0/1

Shooting statistics

Position	Goals	Sav.	Miss.	Post	Blk.	Total	%
Back (9m)	10	6	1	2	4	23	43
Line (6m)	7	1	0	1	0	9	78
Wing	2	3	0	1	0	6	33
7m penalties	2	3	0	1	0	6	33
Fastbreak	0	0	0	0	0	0	0
Breakthrough	5	0	0	1	0	6	83
Total	26	13	1	6	4	50	52

Jersey number Tot. Total shooting 6m 6m (line) shooting 9m 9m shooting Wng Wing shooting FB Fastbreak sh. 7m 7m penalty sh.
 Brk. Breakthrough sh. LD Long distance sh. As. Assists PC Pass clear chance E7 Earned 7m pen. TF Technical faults St. Steals
 2m 2m punishments C7. Committed 7m E2 Earned 2m pun. YC. Yellow cards R/B Red/Blue cards Blk. Blocks S Starting Line-up



26th IHF Women's World Championship

Denmark • Norway • Sweden

Final Round, 27-28. place



Match Team Statistics

Match No. 103

P.R. of China 25 - 26 Chile

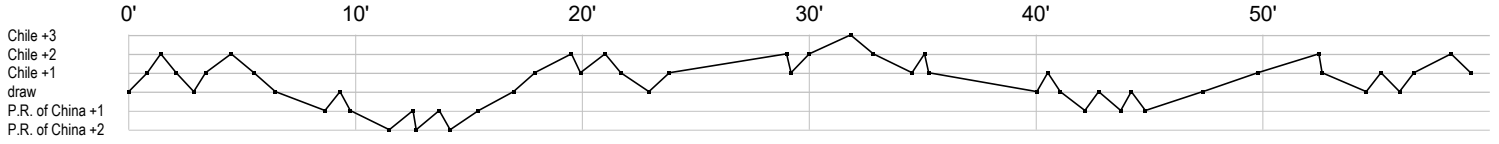
(13 - 15) (12 - 11)

13.12.2023. 18:00

Attendance: 103

Arena Nord

Referees: Heidy Elsaied (EGY) / Yasmina Elsaied (EGY)



P.R. of China

1 Lu C	r r s r r s r s s t r r r r s r r r r r ss s r r s r r	r r
5 Wang J		
9 Jiang Y		
11 Liu C	t ifg a t f f a f f f	f t a
12 Li X	g p gi g g g g	g g a f x a e f f
13 Zhao X		t a c
14 Zhou M		
17 Hu Y		s r s s r r s r r r r
18 Wei N		f
21 Zhang G		g 2c
22 Ma J		t 2
23 Zhuang H	g g 2c	p b t g
27 Gong L	t i g xa	f t 2c 2 f a xx g2
28 Liu X		
34 Jin M	a t a a bg	a p t a p t g g g p i c t g pf eg
53 Liu Y	g 2c	g g g f

Chile

4 Paul C	f	p	c fbf g g e
5 Ramirez	b a b g a t		
6 Lovera Salas	ffg g 2 p g g g	f t f f a p t2	f i t a
7 Müller Ruiz G	b ie g	f	c
8 Araya Salfate	g f f t fa a f	t a f p ef	g
9 Galvez C	f t		
10 Parra Parra F	g 2 2	a gi a	f g ff g
14 Moreno		b g	g
16 Torres Lara A	g ie g	iet g g ie	
17 Pacheco			
18 Correa		t g	
19 Piantini	r r r r r r r r s	s r r r s s r r r r r	
22 Álvarez		i f f g	
23 Cortez		s r r r s s s r	s s r r r s s r
28 Carrasco V		a g f p g g	
30 Bocchieri		f	

In game	g Goal scored	f Missed shot	a Assist	t Technical faults	b Steal
2 2min suspension	e Earned 7m	c Committed 7m	y Yellow card	r Red Card	k Blue card
i Earned 2min.	x Block	4 4min suspension	p Pass for clear chance	s Saved shot	r Received goal