



26th IHF Women's World Championship

Denmark • Norway • Sweden

Final Round, 31-32. place



Match Team Statistics

Match No. 101

Greenland 23 - 28 Iran

(12 - 12) (11 - 16)

13.12.2023. 13:00

Attendance: 537

Arena Nord

Referees: Kristof Altmar (HUN) / Marton Horvath (HUN)

Greenland

#	Surname and name	S	Goals / shots									Attack				Def.			Penalties				TP		
			Tot.	%	9m	6m	Wing	7m	FB	Brk.	LD	As.	PC	E7	E2	TF	St.	C7	Blk	YC	2m	R		B	
2	LUKASSEN Nuunu		3/6	50			2/4	1/2																	31:14
3	HEILMANN Andrea Marie Bertia Karina												1	1	2	3		1							27:25
4	HEILMANN Anja Labansen	S	1/2	50			1/2								1										27:25
5	MEINCKE Ivana		2/3	67		1/2			1/1									1				1			17:27
7	KAJANGMAT Aviana Vilhelmine Jorna	S	2/3	67			1/2	1/1							1	1									49:25
8	FREDERIKSEN Ane-Sofiannuaq Petrine																								
10	GADGAARD Josefine Jakobsgaard	S	1/2	50						1/2		3	6	1		2	2		1						58:25
12	FLY Nivi Satorana Amalie																								5:16
13	BJERGE Ivalu Cecilie	S	8/12	67	5/8					3/4		4	1	1	1	4	1	1				1			49:09
14	PETERSEN Nivi Jensen		0/4	0	0/4							1		1		1									14:45
15	ROTHBERG Sandra		1/1	100															1			2			13:55
16	LORENTZEN Rina Moller	S														1									46:11
17	HANSEN Lykke Catrine Frank		1/3	33	1/3											1						1			8:37
21	PEDERSEN Aili Paneeraq	S																	1						4:54
26	HOLM Ivaana Augusta Ottosen	S	2/4	50		2/4																			47:19
79	ZEEB Sascha Ane Jordening		2/3	67			0/1	2/2									1								18:33
	Team / bench																								
	UKUPNO		23/43	53	6/15	3/6	4/9	4/5	1/1	4/6	1/1	8	8	5	4	15	5	4	2	0	5	0	0		

#	Surname and name	Saves / shots								
		Tot.	%	9m	6m	Wing	7m	FB	Brk.	LD
12	FLY Nivi Satorana Amalie	0/3	0			0/1			0/2	
16	LORENTZEN Rina Moller	7/30	23	4/10	1/6	1/7	1/3		0/4	
	TOTAL	7/33	21	4/10	1/6	1/8	1/3	0/0	0/6	0/0

Coach: Anders Friis

Number of attacks: 57, Efficiency: 40%, Average Duration: 34.35 seconds

Attack by type of defense

	Shots	9m	6m	Wing	TF	E7	E2
On def. 6-0	10/19	4/8	3/4	2/5	10	1	1
On def. 5-1	7/15	2/6	0/1	2/4	5	3	2
On def. 4-2	0/2	0/1	0/1	0/0	0	1	1
Fastbreak	1/1				0	0	0

Defense by type

	Total	9m	6m	Wing	Stl.	C7	2m
Def. 6-0	10/14	2/4	0/1	4/5	2	3	0
Def. 5-1	10/18	3/10	5/5	2/2	3	1	0
Def. 4-2	4/4	1/1	0/0	1/1	0	0	0
Fastbreak	0/0				0	0	5

Attack with superiority / minority / goalkeeper out

	Attack				Reaction		
	Att.	Eff.	Shots	TF	FB	LD	Tot.
7 on 6 (GK out)	10	20%	2/6	4	0/0	0/2	0/2
7 on 5 (GK out)	1	100%	1/1	0	0/0	0/0	0/0
6 on 6 (GK out)	4	75%	3/3	1	0/0	2/2	2/2
6 on 5 (GK out)	1	0%	0/0	1	0/0	0/0	0/0
6 on 6	30	33%	10/22	8			
6 on 5	8	63%	5/7	1			
5 on 6	1	100%	1/1	0			
5 on 5	2	50%	1/2	0			

Player superiority / GK out counted at the end of attack (in case it changes during attack)

Defense with superiority / minority / goalkeeper out

	Attack				Reaction		
	Att.	Eff.	Shots	TF	FB	LD	Tot.
7 on 6 (GK out)	3	33%	1/2	1	0/0	0/0	0/0
6 on 6 (GK out)	3	33%	1/3	0	0/0	1/1	1/1
6 on 6	37	46%	17/24	13			
5 on 6	3	33%	1/3	0			
6 on 5 (GK out)	1	100%	1/1	0	0/0	0/0	0/0
6 on 5	9	78%	7/9	0			

Numbers show attacking numbers of opponent. Lower efficiency of opponent means better defense of this team

Jersey number Tot. Total shooting 6m 6m (line) shooting 9m 9m shooting Wng Wing shooting FB Fastbreak sh. 7m 7m penalty sh.
 Brk. Breakthrough sh. LD Long distance sh. As. Assists PC Pass clear chance E7 Earned 7m pen. TF Technical faults St. Steals
 2m 2m punishments C7. Committed 7m E2 Earned 2m pun. YC. Yellow cards R/B Red/Blue cards Blk. Blocks S Starting Line-up



26th IHF Women's World Championship

Denmark • Norway • Sweden

Final Round, 31-32. place



Match Team Statistics

Match No. 101

Greenland 23 - 28 Iran

(12 - 12) (11 - 16)

13.12.2023. 13:00

Attendance: 537

Arena Nord

Referees: Kristof Altmar (HUN) / Marton Horvath (HUN)

Shot distribution by player

2 N. Lukassen

		1/2
1/1		1/1

1 post 1 miss.

3 A. Heilmann

4 A. Heilmann

		1/1
	0/1	

5 I. Meincke

1/1		
		1/2

7 A. Kajangmat

1/1		1/1

1 miss.

8 A. Frederiksen

10 J. Gadgaard

1/2		

13 I. Bierge

1/1		
1/1		2/3
1/1	0/1	3/3

2 miss.

14 N. Petersen

0/1	0/1	
0/1		

1 miss.

15 S. Rothberg

	1/1	

17 L. Hansen

	0/1	
	1/1	0/1

21 A. Pedersen

26 I. Holm

0/1		
		0/1
2/2		

79 S. Zeeb

1/1		1/1

1 miss.

TOTAL

2/4	0/1	2/3
4/6	1/2	4/6
4/4	1/3	5/7

1 post 6 miss.

Saves distribution goalkeepers

12 N. Fly

0/1		
	0/1	0/1

16 R. Lorentzen

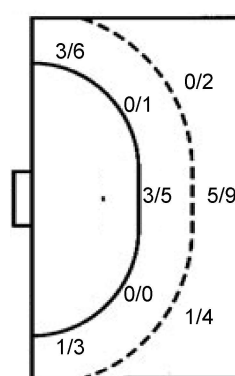
0/1	0/1	2/5
1/3		0/1
2/11	1/2	1/4

TOTAL

0/1	0/1	2/5
1/4		0/1
2/11	1/3	1/5

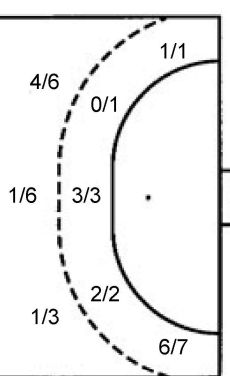
Shots by position

ATTACK



7m penalties 4/5
Fastbreak 1/1
Breakthrough 4/6
Long dist. 1/1

DEFENSE



7m penalties 2/4
Fastbreak 0/0
Breakthrough 6/7
Long dist. 2/4

Shooting statistics

Position	Goals	Sav.	Miss.	Post	Blk.	Total	%
Back (9m)	6	6	3	0	0	15	40
Line (6m)	3	3	0	0	0	6	50
Wing	4	2	2	1	0	9	44
7m penalties	4	0	1	0	0	5	80
Fastbreak	1	0	0	0	0	1	100
Breakthrough	4	2	0	0	0	6	67
Total	22	13	6	1	0	42	52

Jersey number Tot. Total shooting 6m 6m (line) shooting 9m 9m shooting Wng Wing shooting FB Fastbreak sh. 7m 7m penalty sh.
Brk. Breakthrough sh. LD Long distance sh. As. Assists PC Pass clear chance E7 Earned 7m pen. TF Technical faults St. Steals
2m 2m punishments C7. Committed 7m E2 Earned 2m pun. YC. Yellow cards R/B Red/Blue cards Blk. Blocks S Starting Line-up

Handball statistics and livescore by Toma-soft ltd (www.toma-soft.hr)



26th IHF Women's World Championship

Denmark • Norway • Sweden

Final Round, 31-32. place



Match Team Statistics

Match No. 101

Greenland 23 - 28 Iran

(12 - 12) (11 - 16)

13.12.2023. 13:00

Attendance: 537

Arena Nord

Referees: Kristof Altmar (HUN) / Marton Horvath (HUN)

Iran

Players		Goals / shots									Attack				Def.			Penalties				TP				
#	Surname and name	S	Tot.	%	9m	6m	Wing	7m	FB	Brk.	LD	As.	PC	E7	E2	TF	St.	C7	Blk	YC	2m	R	B			
2	ZANDI Asra	S	5/6	83			4/5			1/1							1								39:03	
4	MERIKH Fatemeh	S	6/9	67	3/5			2/3		1/1		3	1	2		2		2				1			50:46	
9	RAHMANIAN Setareh																								0:21	
10	SHAHSAVARI Atieh	S										1				1	1								12:35	
11	BADVI Mehraban		3/7	43	1/4					1/1	1/2	6				2	1	1				1			28:18	
12	KHALILI BEHFAR Fatemeh																								48:17	
17	VATAN PARAST TOOTOONSIZ Mina																									
20	EIZADGASHB Bahar		1/1	100			1/1															2			26:04	
22	LAK Haniyeh																								1:17	
24	NOROUZI KHORZOUGHJ Hadiseh	S	2/3	67	1/1		1/1				0/1	1				1	2					1			57:19	
27	KIYANIARA Arezou	S	4/7	57	0/2	1/1	1/1			1/2	1/1	1	1	1	2	1									56:41	
33	MOHAMMADI OLOGHI Arezoo	S														1									8:44	
37	FAGHIHI Zahra		4/5	80		4/5										3		1							43:13	
76	KOUDZARIFARAHANI Nastaran	S	3/6	50	1/3			0/1		2/2		2		1	2	2	1	1							40:49	
88	OSHAGHI Maede																								6:33	
96	RAJABI Sanaz																									
	Team / bench																									
	UKUPNO		28/44	64	6/15	5/6	7/8	2/4	0/0	6/7	2/4	14	2	4	4	14	5	5	0	0	5	0	0			

Goalkeepers		Saves / shots								
#	Surname and name	Tot.	%	9m	6m	Wing	7m	FB	Brk.	LD
12	KHALILI BEHFAR Fatemeh	13/30	43	6/10	3/6	2/5	0/2	0/1	2/6	
22	LAK Haniyeh	0/2	0				0/2			
33	MOHAMMADI OLOGHI Arezoo	0/3	0	0/2		0/1				
	TOTAL	13/35	37	6/12	3/6	2/6	0/4	0/1	2/6	0/0

Coach: Gholamali Akbarabadi

Number of attacks: 56, Efficiency: 50%, Average Duration: 29.02 seconds

Attack by type of defense

	Shots	9m	6m	Wing	TF	E7	E2
On def. 6-0	10/14	2/4	0/1	4/5	5	3	2
On def. 5-1	10/18	3/10	5/5	2/2	9	1	2
On def. 4-2	4/4	1/1	0/0	1/1	0	0	0
Fastbreak	0/0				0	0	0

Defense by type

	Total	9m	6m	Wing	Stl.	C7	2m
Def. 6-0	10/19	4/8	3/4	2/5	5	1	0
Def. 5-1	7/15	2/6	0/1	2/4	0	3	0
Def. 4-2	0/2	0/1	0/1	0/0	0	1	0
Fastbreak	1/1				0	0	5

Attack with superiority / minority / goalkeeper out

	Attack				Reaction		
	Att.	Eff.	Shots	TF	FB	LD	Tot.
7 on 6 (GK out)	3	33%	1/2	1	0/0	0/0	0/0
6 on 6 (GK out)	3	33%	1/3	0	0/0	1/1	1/1
6 on 6	37	46%	17/24	13			
5 on 6	3	33%	1/3	0			
6 on 5 (GK out)	1	100%	1/1	0	0/0	0/0	0/0
6 on 5	9	78%	7/9	0			

Player superiority / GK out counted at the end of attack (in case it changes during attack)

Defense with superiority / minority / goalkeeper out

	Attack				Reaction		
	Att.	Eff.	Shots	TF	FB	LD	Tot.
7 on 6 (GK out)	10	20%	2/6	4	0/0	0/2	0/2
7 on 5 (GK out)	1	100%	1/1	0	0/0	0/0	0/0
6 on 6 (GK out)	4	75%	3/3	1	0/0	2/2	2/2
6 on 5 (GK out)	1	0%	0/0	1	0/0	0/0	0/0
6 on 6	30	33%	10/22	8			
6 on 5	8	63%	5/7	1			
5 on 6	1	100%	1/1	0			
5 on 5	2	50%	1/2	0			

Numbers show attacking numbers of opponent. Lower efficiency of opponent means better defense of this team

Jersey number Tot. Total shooting 6m 6m (line) shooting 9m 9m shooting Wng Wing shooting FB Fastbreak sh. 7m 7m penalty sh.
 Brk. Breakthrough sh. LD Long distance sh. As. Assists PC Pass clear chance E7 Earned 7m pen. TF Technical faults St. Steals
 2m 2m punishments C7. Committed 7m E2 Earned 2m pun. YC. Yellow cards R/B Red/Blue cards Blk. Blocks S Starting Line-up

Handball statistics and livescore by Toma-soft ltd (www.toma-soft.hr)



26th IHF Women's World Championship

Denmark • Norway • Sweden

Final Round, 31-32. place



Match Team Statistics

Match No. 101

Greenland 23 - 28 Iran

(12 - 12) (11 - 16)

13.12.2023. 13:00

Attendance: 537

Arena Nord

Referees: Kristof Altmar (HUN) / Marton Horvath (HUN)

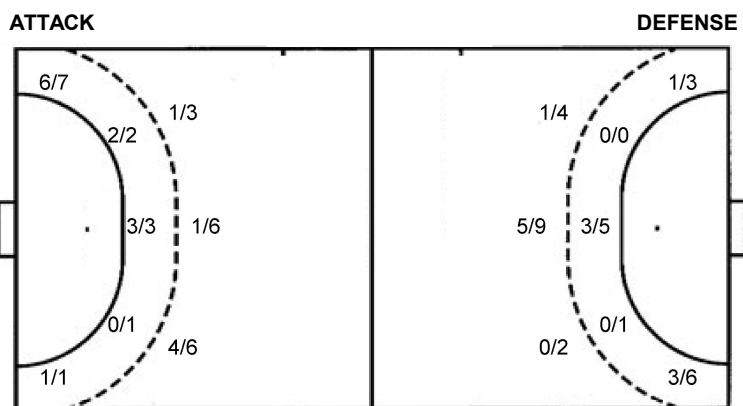
Shot distribution by player

2 A. Zandi 1/1 1/1 2/2 0/1	4 F. Merikh 1/1 1/2 1/2 1/1 1 miss. 2/2 lob	9 S. Rahmanian	10 A. Shahsavari	11 M. Badvi 1/1 1/1 1/1 1 post 2 miss. 1 block	17 M. Vatan Parast Tootoonsiz	20 B. Eizadgashb 1/1
24 H. Norouzi Khorzoughi 1/1 1/1 1 miss.	27 A. Kiyaniara 1/1 2/4 1/1 1 post	37 Z. Faghihi 0/1 2/2 1/1 1/1	76 N. Koudzarfarahani 1/1 2/3 1 miss. 1 block	88 M. Oshaghi	96 S. Rajabi	TOTAL 1/1 1/1 3/5 3/4 1/1 1/1 10/12 2/3 4/5 2 post 5 miss. 2 block 2/2 lob

Saves distribution goalkeepers

12 F. Khalili Behfar 2/4 1/1 1/2 2/6 1/1 2/3 0/3 2/3 2/7	22 H. Lak 0/1 0/1	33 A. Mohammadi Ologhi 0/2 0/1	TOTAL 2/4 1/1 1/3 2/6 1/1 2/6 0/4 2/3 2/7
--	--------------------------------	---	---

Shots by position



7m penalties	2/4	7m penalties	4/5
Fastbreak	0/0	Fastbreak	1/1
Breakthrough	6/7	Breakthrough	4/6
Long dist.	2/4	Long dist.	1/1

Shooting statistics

Position	Goals	Sav.	Miss.	Post	Blk.	Total	%
Back (9m)	6	4	3	1	1	15	40
Line (6m)	5	1	0	0	0	6	83
Wing	7	1	0	0	0	8	88
7m penalties	2	1	1	0	0	4	50
Fastbreak	0	0	0	0	0	0	0
Breakthrough	6	0	0	1	0	7	86
Total	26	7	4	2	1	40	65

Jersey number Tot. Total shooting 6m 6m (line) shooting 9m 9m shooting Wng Wing shooting FB Fastbreak sh. 7m 7m penalty sh.
 Brk. Breakthrough sh. LD Long distance sh. As. Assists PC Pass clear chance E7 Earned 7m pen. TF Technical faults St. Steals
 2m 2m punishments C7. Committed 7m E2 Earned 2m pun. YC. Yellow cards R/B Red/Blue cards Blk. Blocks S Starting Line-up

