



# 26th IHF Women's World Championship

Denmark • Norway • Sweden

Group H, 1. round



Match Team Statistics

Match No. 8

## Czech Republic 32 - 22 Congo

(19 - 11) (13 - 11)

30.11.2023. 20:30

Attendance: 389

Arena Nord

Referees: Denis Bolic (AUT) / Christoph Hurich (AUT)

### Czech Republic

#	Surname and name	S	Goals / shots								Attack				Def.			Penalties				TP					
			Tot.	%	9m	6m	Wing	7m	FB	Brk.	LD	As.	PC	E7	E2	TF	St.	C7	Blk	YC	2m		R	B			
9	STRIŠKOVÁ Adéla		0/1	0						0/1																28:31	
14	KORDOVSKÁ Kamila	S	0/2	0	0/1					0/1					1		1	2	1						2		28:09
22	ŠUSTÁČKOVÁ Marketa	S	2/5	40	1/4										2	4									1	46:47	
24	DESORTOVÁ Eliška		0/1	0											1											5:43	
31	STELLNEROVÁ Alena																									3:52	
32	KUXOVÁ Natálie		1/1	100																						10:43	
33	KUDLÁČKOVÁ Petra	S													1	1										28:40	
34	FRANKOVÁ Julie		1/2	50																						18:51	
38	FRANKOVÁ Anna		0/1	0				0/1																		26:53	
44	ZACHOVÁ Dominika	S	2/2	100																					1	33:07	
48	KOVÁROVÁ Sára		2/2	100	2/2																					13:53	
51	JERABKOVA Marketa	S	7/11	64	3/5				1/1					6		1	1	2							1	44:58	
67	MALÁ Veronika	S	3/3	100		1/1								1		1	2									30:51	
79	NOVOTNÁ Sabrina													1												29:37	
91	JESTŘIBKOVÁ Anna		3/3	100		1/1																			1	19:02	
96	CHOLEVOVA Charlotte	S	11/14	79	3/4					2/2	1/1	5/7		2	2		1	1								49:10	
	Team / bench																										
	UKUPNO		32/48	67	9/16	2/2	0/1	3/3	8/10	10/16	0/0		14	8	3	6	14	0	3	2	0	4	0	0			

Goalkeepers		Saves / shots								
#	Surname and name	Tot.	%	9m	6m	Wing	7m	FB	Brk.	LD
33	KUDLÁČKOVÁ Petra	5/16	31	1/6	2/3	1/3		0/1	1/3	
79	NOVOTNÁ Sabrina	11/22	50	7/14	0/1	2/2	0/2		2/3	
	TOTAL	16/38	42	8/20	2/4	3/5	0/2	0/1	3/6	0/0

Coach: Bent Dahl

Number of attacks: 60, Efficiency: 53%, Average Duration: 22.00 seconds

### Attack by type of defense

	Shots	9m	6m	Wing	TF	E7	E2
On def. 6-0	17/29	6/13	1/1	0/0	9	2	4
On def. 5-1	2/4	2/2	0/0	0/1	5	1	2
On def. 3-2-1	2/2	1/1	1/1	0/0	0	0	0
Fastbreak	8/10				0	0	0

### Defense by type

	Total	9m	6m	Wing	Stl.	C7	2m
Def. 6-0	19/47	12/27	2/5	2/6	0	3	0
Fastbreak	1/1				0	0	4

### Attack with superiority / minority / goalkeeper out

	Attack				Reaction		
	Att.	Eff.	Shots	TF	FB	LD	Tot.
6 on 6 (GK out)	2	50%	1/1	1	0/0	0/0	0/0
5 on 5 (GK out)	1	0%	0/1	0	0/0	0/0	0/0
4 on 5 (GK out)	1	0%	0/0	1	0/0	0/0	0/0
6 on 6	46	57%	26/38	8			
6 on 5	9	44%	4/5	4			
6 on 4	1	100%	1/1	0			

Player superiority / GK out counted at the end of attack (in case it changes during attack)

### Defense with superiority / minority / goalkeeper out

	Attack				Reaction		
	Att.	Eff.	Shots	TF	FB	LD	Tot.
7 on 6 (GK out)	3	0%	0/2	1	0/1	0/0	0/1
6 on 6 (GK out)	4	50%	2/4	0	1/1	0/0	1/1
6 on 6	45	36%	16/34	11			
5 on 6	4	75%	3/4	0			
6 on 5	1	0%	0/1	0			
5 on 4	1	0%	0/0	1			
6 on 3 (GK out)	1	0%	0/1	0	0/0	0/0	0/0
6 on 3	1	100%	1/1	0			

Numbers show attacking numbers of opponent. Lower efficiency of opponent means better defense of this team

# Jersey number Tot. Total shooting 6m 6m (line) shooting 9m 9m shooting Wng Wing shooting FB Fastbreak sh. 7m 7m penalty sh.  
 Brk. Breakthrough sh. LD Long distance sh. As. Assists PC Pass clear chance E7 Earned 7m pen. TF Technical faults St. Steals  
 2m 2m punishments C7. Committed 7m E2 Earned 2m pun. YC. Yellow cards R/B Red/Blue cards Blk. Blocks S Starting Line-up



# 26th IHF Women's World Championship

Denmark • Norway • Sweden

Group H, 1. round



## Match Team Statistics

Match No. 8

## Czech Republic 32 - 22 Congo

(19 - 11) (13 - 11)

30.11.2023. 20:30

Attendance: 389

Arena Nord

Referees: Denis Bolic (AUT) / Christoph Hurich (AUT)

## Shot distribution by player

<b>9 A. Střížková</b> 1 miss.	<b>14 K. Kordovská</b> 1 miss.	<b>22 M. Šustáčková</b> 0/1 1/1 0/1	<b>24 E. Desortová</b> 0/1	<b>31 A. Stellnerová</b>	<b>32 N. Kuxová</b> 1/1	<b>34 J. Franková</b> 1/2
<b>38 A. Franková</b> 1 post	<b>44 D. Zachova</b>	<b>48 S. Kovářová</b> 1/1 1/1	<b>51 M. Jerabkova</b> 1 miss. 5/6 0/1 2/2	<b>67 V. Malá</b> 2/2 1/1	<b>91 A. Jestřibková</b> 1/1 1/1	<b>96 C. Cholevová</b> 1 post 1 miss. 1/1 1/1 3/3 1/1 1/1 2/2 3/4

## TOTAL

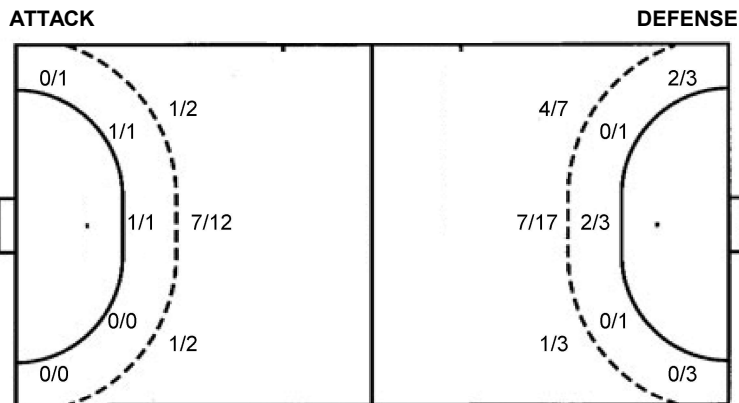
4/6	6/7
1/1	2/2
11/13	2/3 6/10

2 post 4 miss.

## Saves distribution goalkeepers

<b>33 P. Kudláčková</b> 1/2 0/1 2/2 1/7 1/4	<b>79 S. Novotná</b> 0/1 1/1 0/3 2/5 1/2 4/4 1/1 2/4	<b>TOTAL</b> 1/3 1/1 0/4 2/5 3/4 5/11 1/1 3/8
--	---	--

## Shots by position



7m penalties 3/3  
Fastbreak 8/10  
Breakthrough 10/16  
Long dist. 0/0

7m penalties 2/3  
Fastbreak 1/1  
Breakthrough 3/9  
Long dist. 0/0

## Shooting statistics

Position	Goals	Sav.	Miss.	Post	Blk.	Total	%
Back (9m)	9	7	0	0	0	16	56
Line (6m)	2	0	0	0	0	2	100
Wing	0	0	0	1	0	1	0
7m penalties	3	0	0	0	0	3	100
Fastbreak	8	0	2	0	0	10	80
Breakthrough	10	3	2	1	0	16	63
<b>Total</b>	<b>32</b>	<b>10</b>	<b>4</b>	<b>2</b>	<b>0</b>	<b>48</b>	<b>67</b>

# Jersey number Tot. Total shooting 6m 6m (line) shooting 9m 9m shooting Wng Wing shooting FB Fastbreak sh. 7m 7m penalty sh.  
Brk. Breakthrough sh. LD Long distance sh. As. Assists PC Pass clear chance E7 Earned 7m pen. TF Technical faults St. Steals  
2m 2m punishments C7. Committed 7m E2 Earned 2m pun. YC. Yellow cards R/B Red/Blue cards Blk. Blocks S Starting Line-up

Handball statistics and livescore by Toma-soft ltd (www.toma-soft.hr)



# 26th IHF Women's World Championship

Denmark • Norway • Sweden

Group H, 1. round



Match Team Statistics

Match No. 8

## Czech Republic 32 - 22 Congo

(19 - 11) (13 - 11)

30.11.2023. 20:30

Attendance: 389

Arena Nord

Referees: Denis Bolic (AUT) / Christoph Hurich (AUT)

### Congo

#	Surname and name	S	Goals / shots								Attack				Def.			Penalties				TP			
			Tot.	%	9m	6m	Wing	7m	FB	Brk.	LD	As.	PC	E7	E2	TF	St.	C7	Blk	YC	2m		R	B	
1	KODIA Ruth														1									50:46	
5	RUTIL Kimberley Lisa Melissa		4/6	67	1/3											1	1							41:17	
6	DIVOKO KANGOU Neida Klenn																					1		34:07	
7	NGUEKWIAN YIMGA Diane Gaelle	S	0/1	0	0/1																			22:16	
10	HENDO Mercianne		0/1	0																				8:19	
11	MONGO MAKOUALA Hermida Chanaelle	S																					1	1	15:46
12	APENDI NDZILA Malvina Suzane	S																						3:22	
13	ZOUBABELA Grace	S	0/4	0		0/1	0/3																	27:46	
15	DOMINGOS Eugenia Ventura		1/3	33	0/2		1/1																	21:41	
23	NGOMBELE Betchaidelle		9/13	69	9/13																			32:51	
45	NKOU Josephine Line Maxime		1/2	50			0/1																	25:13	
61	SARAIVA Rita Luana																							40:19	
66	MAMBOU Suzanne Bellette		1/3	33		1/1	0/1																	11:51	
78	DIAGOURAGA Fanta	S	3/10	30	1/5		2/2									4	1	1						43:51	
79	DORSON Sharon Lea	S	3/5	60	1/1	2/4																		20:06	
99	JAPPONT Kassandra	S	0/3	0	0/2																			20:29	
Team / bench																									
UKUPNO			22/51	43	12/27	2/5	2/6	2/3	1/1	3/9	0/0	6	3	3	2	13	2	3	0	0	5	1	0		

#	Surname and name	Saves / shots								
		Tot.	%	9m	6m	Wing	7m	FB	Brk.	LD
1	KODIA Ruth	10/40	25	7/16	0/2		0/2	0/8	3/12	
12	APENDI NDZILA Malvina Suzane	0/2	0				0/1		0/1	
TOTAL		10/42	24	7/16	0/2	0/0	0/3	0/8	3/13	0/0

Coach: Younes Tatby

Number of attacks: 60, Efficiency: 37%, Average Duration: 38.00 seconds

### Attack by type of defense

	Shots	9m	6m	Wing	TF	E7	E2
On def. 6-0	19/47	12/27	2/5	2/6	13	3	2
Fastbreak	1/1				0	0	0

### Defense by type

	Total	9m	6m	Wing	Stl.	C7	2m
Def. 6-0	17/29	6/13	1/1	0/0	0	2	0
Def. 5-1	2/4	2/2	0/0	0/1	2	1	0
Def. 3-2-1	2/2	1/1	1/1	0/0	0	0	0
Fastbreak	8/10				0	0	5

### Attack with superiority / minority / goalkeeper out

	Attack				Reaction		
	Att.	Eff.	Shots	TF	FB	LD	Tot.
7 on 6 (GK out)	3	0%	0/2	1	0/1	0/0	0/1
6 on 6 (GK out)	4	50%	2/4	0	1/1	0/0	1/1
6 on 6	45	36%	16/34	11			
5 on 6	4	75%	3/4	0			
6 on 5	1	0%	0/1	0			
5 on 4	1	0%	0/0	1			
6 on 3 (GK out)	1	0%	0/1	0	0/0	0/0	0/0
6 on 3	1	100%	1/1	0			

Player superiority / GK out counted at the end of attack (in case it changes during attack)

### Defense with superiority / minority / goalkeeper out

	Attack				Reaction		
	Att.	Eff.	Shots	TF	FB	LD	Tot.
6 on 6 (GK out)	2	50%	1/1	1	0/0	0/0	0/0
5 on 5 (GK out)	1	0%	0/1	0	0/0	0/0	0/0
4 on 5 (GK out)	1	0%	0/0	1	0/0	0/0	0/0
6 on 6	46	57%	26/38	8			
6 on 5	9	44%	4/5	4			
6 on 4	1	100%	1/1	0			

Numbers show attacking numbers of opponent. Lower efficiency of opponent means better defense of this team

# Jersey number Tot. Total shooting 6m 6m (line) shooting 9m 9m shooting Wng Wing shooting FB Fastbreak sh. 7m 7m penalty sh.  
 Brk. Breakthrough sh. LD Long distance sh. As. Assists PC Pass clear chance E7 Earned 7m pen. TF Technical faults St. Steals  
 2m 2m punishments C7. Committed 7m E2 Earned 2m pun. YC. Yellow cards R/B Red/Blue cards Blk. Blocks S Starting Line-up



# 26th IHF Women's World Championship

Denmark • Norway • Sweden

Group H, 1. round



## Match Team Statistics

Match No. 8

## Czech Republic 32 - 22 Congo

(19 - 11) (13 - 11)

30.11.2023. 20:30

Attendance: 389

Arena Nord

Referees: Denis Bolic (AUT) / Christoph Hurich (AUT)

## Shot distribution by player

<b>5 K. Rutil</b>	<b>6 N. Divoko Kangou</b>	<b>7 D. Nguekwian Yimga</b>	<b>10 M. Hendo</b>	<b>11 H. Mongo Makouala</b>	<b>13 G. Zoubabela</b>	<b>15 E. Domingos</b>
1/1 0/1 2/3 1/1						
		0/1	1 miss.		0/1 0/1	1/1 1 post 1 block
<b>23 B. Ngombele</b>	<b>45 J. Nkou</b>	<b>61 R. Saraiva</b>	<b>66 S. Mambou</b>	<b>78 F. Diagouraga</b>	<b>79 S. Dorson</b>	<b>99 K. Jappont</b>
1/1 2/2 2/3 2/3 2/2						
2 miss.			2 miss.	2 miss. 1 block	1/1 lob	0/1 1 post

### TOTAL

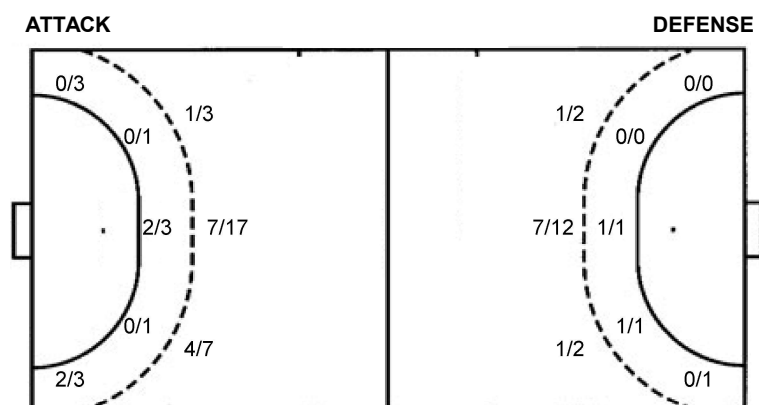
2/3	0/1	4/4
3/5		1/4
6/11	0/1	5/8

2 post 9 miss. 2 block 1/1 lob

## Saves distribution goalkeepers

<b>1 R. Kodia</b>	<b>12 M. Apendi Ndzila</b>	<b>TOTAL</b>
2/5 0/1 2/12 1/3 4/10	0/1	2/6 0/1 2/13 1/3 4/10
	0/1	1/7 0/2

## Shots by position



7m penalties 2/3  
Fastbreak 1/1  
Breakthrough 3/9  
Long dist. 0/0

7m penalties 3/3  
Fastbreak 8/10  
Breakthrough 10/16  
Long dist. 0/0

## Shooting statistics

Position	Goals	Sav.	Miss.	Post	Blk.	Total	%
Back (9m)	12	8	3	2	2	27	44
Line (6m)	2	2	1	0	0	5	40
Wing	2	3	1	0	0	6	33
7m penalties	2	0	1	0	0	3	67
Fastbreak	1	0	0	0	0	1	100
Breakthrough	3	3	3	0	0	9	33
<b>Total</b>	<b>22</b>	<b>16</b>	<b>9</b>	<b>2</b>	<b>2</b>	<b>51</b>	<b>43</b>

# Jersey number Tot. Total shooting 6m 6m (line) shooting 9m 9m shooting Wng Wing shooting FB Fastbreak sh. 7m 7m penalty sh.  
Brk. Breakthrough sh. LD Long distance sh. As. Assists PC Pass clear chance E7 Earned 7m pen. TF Technical faults St. Steals  
2m 2m punishments C7. Committed 7m E2 Earned 2m pun. YC. Yellow cards R/B Red/Blue cards Blk. Blocks S Starting Line-up

