

Detailed statistics

### Maringa 31 - 32 Goes

(13 - 17) (13 - 9) (reg. time: 26:26) (PEN. 5 - 6)

18.6.2026. 19:00

Attendance:  
CEO (Asunción)

Referees: Pamela Ferreira / Natany Valentin

## Maringa

Players		Goals / attempts									Attack					Defense			Disciplinary				
#	Surname and name	Tot.	%	9m	6m	Wng.	7m	FB	Brk.	LD	As.	PC	E7	E2	Tr.	St.	C7	Blk	YC	2m	RC	BC	
1	DA SILVA Anna										1												
2	DA SILVA Gabriela	5/9	56			3/7	1/1	1/1								1				1			
4	DA SILVA RAMOS Luana	2/2	100			2/2																	
6	FIGURE CANATA Sabrina	1/4	25		0/2			0/1	1/1						3		2			1			
7	ALVES Esther	0/1	0				0/1																
8	MARTINS Dayenne	3/3	100		3/3								4		1						1		
10	MACHADO Alanis	1/2	50			1/2								1									
11	NICOLAO Aghata	0/1	0						0/1														
13	CAETANO Mirela	2/2	100						2/2						1								
14	REGINA DA SILVEIRA Cassia	0/3	0	0/2					0/1						1								
16	SOUSA Isabelly																						
18	DA COSTA RYANNE																						
24	HOLTZ Maria	12/14	86	2/2	1/1		6/7		3/4		2				1	1							
26	GOMEZ Raphaela	4/5	80	1/1			1/1		2/3		6	3			2	2	1				1		
28	SALES Marilia	1/2	50				1/2				1				2								
77	RIBEIRO Isadora														1								
	Team / bench																						
	<b>TOTAL</b>	<b>31/48</b>	<b>65</b>	<b>3/5</b>	<b>4/6</b>	<b>6/11</b>	<b>9/12</b>	<b>1/2</b>	<b>8/12</b>	<b>0/0</b>	<b>10</b>	<b>3</b>	<b>4</b>	<b>0</b>	<b>13</b>	<b>4</b>	<b>3</b>	<b>0</b>	<b>0</b>	<b>4</b>	<b>0</b>	<b>0</b>	

Goalkeepers		Saves / shots							
#	Surname and name	Tot.	%	9m	6m	Wng.	7m	FB	Brk.
1	DA SILVA Anna	6/27	22	1/3	0/1	1/4	1/5	0/1	3/13
16	SOUSA Isabelly	4/12	33	1/3	1/1	0/2	1/4		1/2
	<b>TOTAL</b>	<b>10/39</b>	<b>26</b>	<b>2/6</b>	<b>1/2</b>	<b>1/6</b>	<b>2/9</b>	<b>0/1</b>	<b>4/15</b>

Coach: Valmir Fassina

## Attack

	Shooting	9m	6m	Wing	Trn.	Ear. 7m	Ear. 2m.
On defense 6-0	21/34	3/5	4/6	6/11	13	4	0
In transition	1/2				0	0	0

## Defense

	Shooting	9m	6m	Wing	Steals	Cm. 7m.	2m
Defense 6-0	21/31	4/7	1/2	5/6	4	3	4
In transition	1/1				0	0	0

## Shooting statistics

Position	Goals	Saved	Missed	Post	Blocked	Total	%
Back (9m)	3	0	1	1	0	5	60
Line (6m)	4	1	1	0	0	6	67
Wing	6	2	2	1	0	11	55
7m penalties	9	2	0	1	0	12	75
Fastbreak	1	1	0	0	0	2	50
Breakthrough	8	3	0	1	0	12	67
<b>Total</b>	<b>31</b>	<b>9</b>	<b>4</b>	<b>4</b>	<b>0</b>	<b>48</b>	<b>65</b>

# Jersey Tot. Goals/Attempts 6m Shooting 6m 9m Shooting 9m Wng. Shooting wing FB Fastbreak 7m 7m penalties  
 Brk Breakthrough LD Long distance As. Assists PC Pass clear chance E7 Earned 7m Tr. Turnovers St. Steals  
 2m 2m suspensions C7 Committed 7m E2 Earned 2m sus. YC Yellow cards RC Red card BC Blue card Blk. Blocked shots

Detailed statistics

**Maringa 31 - 32 Goes**  
(13 - 17) (13 - 9) (reg. time: 26:26) (PEN. 5 - 6)

18.6.2026. 19:00

Attendance:  
CEO (Asunción)

Referees: Pamela Ferreira / Natany Valentin

### Shot distribution

#### 2 G. Da Silva

	1/1	1/1
1/2	1/1	1/1

1 post 2 miss.

#### 4 L. Da Silva Ramos

		1/1
		1/1

#### 6 S. Fiore Canata

0/1	1/2	

1 miss.

#### 7 E. Alves


1 post

#### 8 D. Martinez

1/1		
1/1		1/1

#### 10 A. Machado

1/1		
		0/1

#### 11 A. Nicolao

0/1		

#### 13 M. Caetano

	1/1	1/1

#### 14 C. Regina da Silveira

0/1		

1 post 1 miss.

#### 18 R. Da Costa


#### 24 M. Holtz

	1/1	
2/2	5/6	2/2
	2/3	

#### 26 R. Gomez

1/1		2/2

1 post 1/1 lob

#### 28 M. Sales

1/2		

#### 77 I. Ribeiro


### TOTAL

2/2	2/2	3/3
3/6	7/9	4/4
3/5	3/4	3/4

4 post 4 miss. 1/1 lob

### Shot distribution goalkeepers

#### 1 A. da Silva

	1/1	
1/7	2/4	0/4
0/1	0/2	1/6

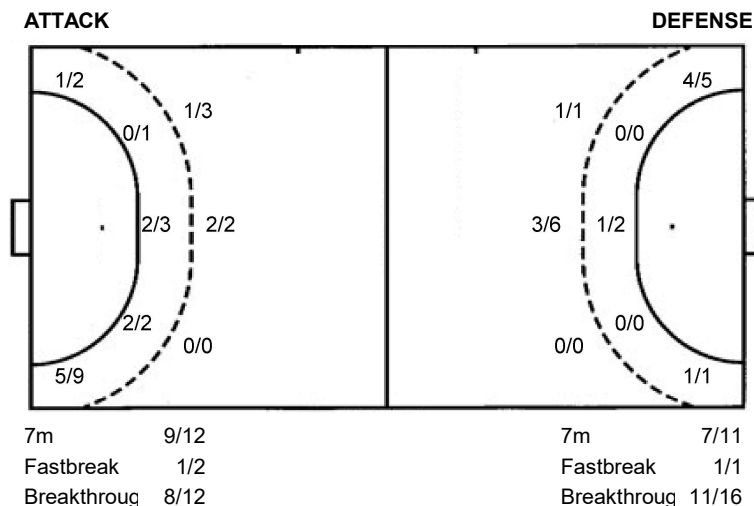
#### 16 I. Sousa

0/1		0/2
1/1	3/3	0/1
0/2	0/1	0/1

### TOTAL

0/1	1/1	0/2
2/8	5/7	0/5
0/3	0/3	1/7

### Shots by position



#	Jersey	Tot.	Goals/Attempts	6m	Shooting 6m	9m	Shooting 9m	Wng.	Shooting wing	FB	Fastbreak	7m	7m penalties
Brk	Breakthrough	LD	Long distance	As.	Assists	PC	Pass clear chance	E7	Earned 7m	Tr.	Turnovers	St.	Steals
2m	2m suspensions	C7	Committed 7m	E2	Earned 2m sus.	YC	Yellow cards	RC	Red card	BC	Blue card	Blk.	Blocked shots

Detailed statistics

### Maringa 31 - 32 Goes

(13 - 17) (13 - 9) (reg. time: 26:26) (PEN. 5 - 6)

18.6.2026. 19:00

Attendance:  
CEO (Asunción)

Referees: Pamela Ferreira / Natany Valentin

### Goes

Players		Goals / attempts									Attack					Defense			Disciplinary				
#	Surname and name	Tot.	%	9m	6m	Wng.	7m	FB	Brk.	LD	As.	PC	E7	E2	Tr.	St.	C7	Bik	YC	2m	RC	BC	
2	FREGUEIRO Silvia																						
3	GRIECO Sabrina	10/14	71	4/5		2/2	2/2		2/4	0/1	1	1			4								
4	BARREIRO Martina	7/10	70	0/1	0/1	1/1	2/3		2/2	2/2	3	1	2	1	2								
7	BARREIRO Camila	3/6	50	0/1			0/1		3/4		3						2						
8	MARQUEZ Martina	1/1	100				1/1								1		1						
9	GIMENEZ Sofia	1/1	100						1/1		1		1	1	2					1			
10	IGLESIAS Belen	1/1	100						1/1														
11	ALVAREZ Ana	0/1	0						0/1														
12	HERGATACORZIAN Viviana	0/1	0							0/1													
15	BLENGIO Sofia	3/3	100					1/1	1/1	1/1	1												
16	ALONSO Elena																						
19	PINTOS Luana	2/4	50		1/1		0/2		1/1					1									
23	MERLI Lucia	4/5	80			2/3	2/2																
24	RODRIGUEZ Marina																						
30	ALBINO Djanga	0/1	0						0/1								1						
52	SORIA Camila																						
	Team / bench																						
	<b>TOTAL</b>	<b>32/48</b>	<b>67</b>	<b>4/7</b>	<b>1/2</b>	<b>5/6</b>	<b>7/11</b>	<b>1/1</b>	<b>11/16</b>	<b>3/5</b>	<b>9</b>	<b>2</b>	<b>3</b>	<b>3</b>	<b>9</b>	<b>0</b>	<b>4</b>	<b>0</b>	<b>0</b>	<b>1</b>	<b>0</b>	<b>0</b>	<b>0</b>

Goalkeepers		Saves / shots							
#	Surname and name	Tot.	%	9m	6m	Wng.	7m	FB	Brk.
12	HERGATACORZIAN Viviana	6/18	33	0/2	1/3	1/5	1/2		3/6
15	BLENGIO Sofia	2/9	22		0/1	1/3	0/1	1/2	0/2
16	ALONSO Elena	1/13	8	0/1	0/1		1/8		0/3
	<b>TOTAL</b>	<b>9/40</b>	<b>23</b>	<b>0/3</b>	<b>1/5</b>	<b>2/8</b>	<b>2/11</b>	<b>1/2</b>	<b>3/11</b>

Coach: Miguel Berger

### Attack

	Shooting	9m	6m	Wing	Trn.	Ear. 7m	Ear. 2m.
On defense 6-0	21/31	4/7	1/2	5/6	9	3	3
In transition	1/1				0	0	0

### Defense

	Shooting	9m	6m	Wing	Steals	Cm. 7m.	2m
Defense 6-0	21/34	3/5	4/6	6/11	0	4	1
In transition	1/2				0	0	0

### Shooting statistics

Position	Goals	Saved	Missed	Post	Blocked	Total	%
Back (9m)	4	2	0	1	0	7	57
Line (6m)	1	1	0	0	0	2	50
Wing	5	1	0	0	0	6	83
7m penalties	7	2	1	1	0	11	64
Fastbreak	1	0	0	0	0	1	100
Breakthrough	11	4	1	0	0	16	69
<b>Total</b>	<b>29</b>	<b>10</b>	<b>2</b>	<b>2</b>	<b>0</b>	<b>43</b>	<b>67</b>

# Jersey Tot. Goals/Attempts 6m Shooting 6m 9m Shooting 9m Wng. Shooting wing FB Fastbreak 7m 7m penalties  
 Brk Breakthrough LD Long distance As. Assists PC Pass clear chance E7 Earned 7m Tr. Turnovers St. Steals  
 2m 2m suspensions C7 Committed 7m E2 Earned 2m sus. YC Yellow cards RC Red card BC Blue card Blk. Blocked shots

Detailed statistics

**Maringa 31 - 32 Goes**  
(13 - 17) (13 - 9) (reg. time: 26:26) (PEN. 5 - 6)

18.6.2026. 19:00

Attendance:  
CEO (Asunción)

Referees: Pamela Ferreira / Natany Valentin

### Shot distribution

#### 2 S. Fregueiro


#### 3 S. Grieco

1/1		2/2
3/4	0/1	1/1
1/1	1/1	1/1

1 post 1 miss.

#### 4 M. Barreiro

	1/2	
1/1	2/4	
1/1	1/1	

1/1 lob

#### 7 C. Barreiro

1/1	0/1	1/1
	1/1	

1 post 1 miss.

#### 8 M. Marquez

		1/1

#### 9 S. Gimenez

		1/1

#### 10 B. Iglesias

		1/1

#### 11 A. Alvarez

0/1		

#### 15 S. Blengio

	2/2	
		1/1

#### 19 L. Pintos

1/1	0/1	1/1

1 post

#### 23 L. Merli

1/1		3/4

#### 24 M. Rodriguez


#### 30 D. Albino


0/1 lob

#### 52 C. Soria


### TOTAL

1/1	1/2	2/2
6/8	4/9	5/5
3/3	3/3	6/7

3 post 2 miss. 1/2 lob

### Shot distribution goalkeepers

#### 12 V.

##### Hergatacorzian

0/1	0/1	0/1
2/3	2/4	0/1
1/1	1/2	0/3

#### 15 S. Blengio

0/1	0/1	0/1
1/2		
0/1	0/2	1/1

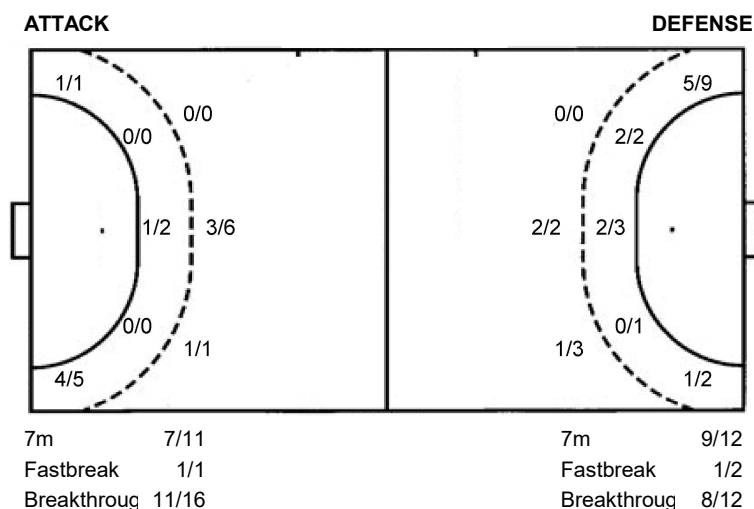
#### 16 E. Alonso

		0/1
0/1	0/5	0/3
1/3		

### TOTAL

0/2	0/2	0/3
3/6	2/9	0/4
2/5	1/4	1/4

### Shots by position



#	Jersey	Tot.	Goals/Attempts	6m	Shooting 6m	9m	Shooting 9m	Wng.	Shooting wing	FB	Fastbreak	7m	7m penalties
Brk	Breakthrough	LD	Long distance	As.	Assists	PC	Pass clear chance	E7	Earned 7m	Tr.	Turnovers	St.	Steals
2m	2m suspensions	C7	Committed 7m	E2	Earned 2m sus.	YC	Yellow cards	RC	Red card	BC	Blue card	Blk.	Blocked shots