

Detailed statistics

**Goes 25 - 25 E.C. Pinheiros**  
(16 - 15) (9 - 10)

15.6.2026. 16:00  
Attendance: 500  
CEO (Asunción)

Referees: Santiago Correa / Agustin Conberse

### Goes

Players		Goals / attempts									Attack					Defense			Disciplinary			
#	Surname and name	Tot.	%	9m	6m	Wng.	7m	FB	Brk.	LD	As.	PC	E7	E2	Tr.	St.	C7	Blk	YC	2m	RC	BC
3	GRIECO Sabrina	5/10	50	1/4	0/1			0/1	3/3	1/1	1		2	1	5		1	1	1			
4	BARREIRO Martina	3/5	60	1/1		0/1	0/1	1/1	1/1			1	1	1	5							
7	BARREIRO Camila	6/9	67	0/1	1/3			1/1	4/4			1	3	1	4					1		
8	MARQUEZ Martina																					
9	GIMENEZ Sofia	1/2	50					1/2														
10	IGLESIAS Belen	1/4	25			0/3		1/1												1		
11	ALVAREZ Ana	1/1	100		1/1								1		1							
12	HERGATACORZIAN Viviana	1/1	100							1/1												
14	OLIVERA Fiorella																					
15	BLENGIO Sofia														1							
16	ALONSO Elena																					
19	PINTOS Luana	7/8	88	0/1			7/7													1		
23	MERLI Lucia																					
24	RODRIGUEZ Marina																					
30	ALBINO Djanga	0/1	0			0/1							1					1				
52	SORIA Camila																					
	Team / bench																					
	<b>TOTAL</b>	<b>25/41</b>	<b>61</b>	<b>2/7</b>	<b>2/5</b>	<b>0/5</b>	<b>7/8</b>	<b>4/6</b>	<b>8/8</b>	<b>2/2</b>	<b>1</b>	<b>2</b>	<b>8</b>	<b>3</b>	<b>16</b>	<b>0</b>	<b>2</b>	<b>1</b>	<b>1</b>	<b>3</b>	<b>0</b>	<b>0</b>

Goalkeepers		Saves / shots							
#	Surname and name	Tot.	%	9m	6m	Wng.	7m	FB	Brk.
12	HERGATACORZIAN Viviana	11/36	31	5/17	2/4	4/6	0/2	0/3	0/4
16	ALONSO Elena								
	<b>TOTAL</b>	<b>11/36</b>	<b>31</b>	<b>5/17</b>	<b>2/4</b>	<b>4/6</b>	<b>0/2</b>	<b>0/3</b>	<b>0/4</b>

Coach: Miguel Berger

### Attack

	Shooting	9m	6m	Wing	Trn.	Ear. 7m	Ear. 2m.
On defense 6-0	12/25	2/7	2/5	0/5	16	8	3
In transition	4/6				0	0	0

### Defense

	Shooting	9m	6m	Wing	Steals	Cm. 7m.	2m
Defense 6-0	20/35	12/19	2/5	2/7	0	2	3
In transition	3/3				0	0	0

### Shooting statistics

Position	Goals	Saved	Missed	Post	Blocked	Total	%
Back (9m)	2	3	1	1	0	7	29
Line (6m)	2	3	0	0	0	5	40
Wing	0	4	1	0	0	5	0
7m penalties	7	1	0	0	0	8	88
Fastbreak	4	2	0	0	0	6	67
Breakthrough	8	0	0	0	0	8	100
<b>Total</b>	<b>23</b>	<b>13</b>	<b>2</b>	<b>1</b>	<b>0</b>	<b>39</b>	<b>59</b>

# Jersey    Tot. Goals/Attempts    6m Shooting 6m    9m Shooting 9m    Wng. Shooting wing    FB Fastbreak    7m 7m penalties  
 Brk Breakthrough    LD Long distance    As. Assists    PC Pass clear chance    E7 Earned 7m    Tr. Turnovers    St. Steals  
 2m 2m suspensions    C7 Committed 7m    E2 Earned 2m sus.    YC Yellow cards    RC Red card    BC Blue card    Blk. Blocked shots

Detailed statistics

**Goes 25 - 25 E.C. Pinheiros**  
(16 - 15) (9 - 10)

15.6.2026. 16:00  
Attendance: 500  
CEO (Asunción)

Referees: Santiago Correa / Agustin Conberse

### Shot distribution

<b>3 S. Grieco</b>	<b>4 M. Barreiro</b>	<b>7 C. Barreiro</b>	<b>8 M. Marquez</b>	<b>9 S. Gimenez</b>	<b>10 B. Iglesias</b>	<b>11 A. Alvarez</b>
1/2 0/2 1/1		1/1 1/1				
2/2	0/1 1/1	1/1 0/1 2/2			0/1	1/1
1/1 0/1	2/3	0/1 1/1		1/2	0/1 0/1	
1 miss.		1 post			1/1 lob	
<b>14 F. Olivera</b>	<b>15 S. Blengio</b>	<b>19 L. Pintos</b>	<b>23 L. Merli</b>	<b>24 M. Rodriguez</b>	<b>30 D. Albino</b>	<b>52 C. Soria</b>
		1/1 0/1 3/3				
		1/1 2/2				
					1 miss.	

### TOTAL

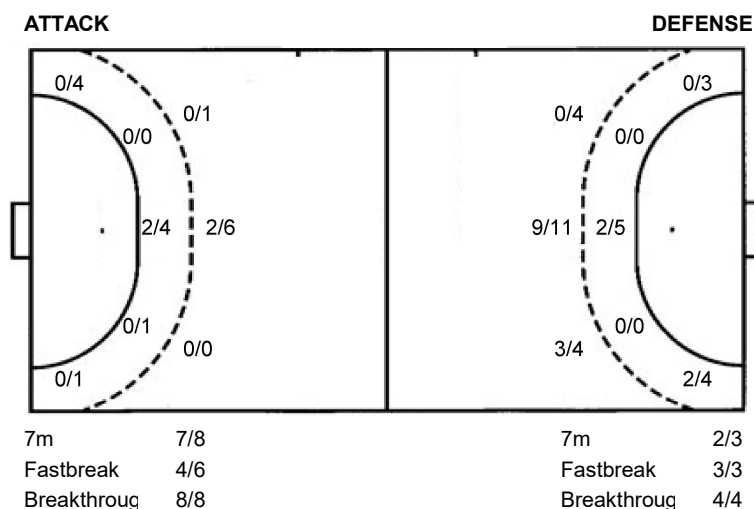
2/3	1/3	1/1
5/6	0/2	6/7
1/1	4/8	3/5

1 post 2 miss. 1/1 lob

### Shot distribution goalkeepers

<b>12 V. Hergatacorzian</b>	<b>16 E. Alonso</b>	<b>TOTAL</b>
2/5 0/1 0/3		2/5 0/1 0/3
0/6 1/2 2/2		0/6 1/2 2/2
1/6 3/8 2/3		1/6 3/8 2/3

### Shots by position



#	Jersey	Tot.	Goals/Attempts	6m	Shooting 6m	9m	Shooting 9m	Wng.	Shooting wing	FB	Fastbreak	7m	7m penalties
Brk	Breakthrough	LD	Long distance	As.	Assists	PC	Pass clear chance	E7	Earned 7m	Tr.	Turnovers	St.	Steals
2m	2m suspensions	C7	Committed 7m	E2	Earned 2m sus.	YC	Yellow cards	RC	Red card	BC	Blue card	Blk.	Blocked shots



# Campeonato Handball SCA Clubes Femenino 2026

Group B, 1. round



Detailed statistics

## Goes 25 - 25 E.C. Pinheiros

(16 - 15) (9 - 10)

15.6.2026. 16:00

Attendance: 500

CEO (Asunción)

Referees: Santiago Correa / Agustin Conberse

### E.C. Pinheiros

Players		Goals / attempts									Attack					Defense			Disciplinary				
#	Surname and name	Tot.	%	9m	6m	Wng.	7m	FB	Brk.	LD	As.	PC	E7	E2	Tr.	St.	C7	Blk	YC	2m	RC	BC	
3	PESSATTO Isabella																						
6	MONTEIRO Jisseli	1/1	100					1/1															
8	MENDES Gabriella	1/1	100						1/1						2								
9	RODRIGUES Ana Paula	4/6	67	3/4	0/1				1/1						3								
11	MONTEIRO Barbarah	1/3	33			0/2	1/1							1	1		2						
15	GREGORIO Rebeca	2/3	67			2/3														1			
17	RODRIGUES Beatriz																						
20	TEIXEIRA Nhauany															1	1						
21	DOS SANTOS Rayane																						
27	OLIVEIRA Jessica																						
28	VITOR Lauendy	3/5	60	3/5									1		3								
33	FREITAS Livia													1			1				1		
71	LUCIANA Rocio	6/11	55	4/5	0/1	0/2	0/1	1/1	1/1					1	1								
72	KIELING Sophia																						
88	MERLIN Mariana	5/8	63	2/5			1/1	1/1	1/1		1				1	1							
91	VENTURA Livia	2/3	67		2/3								1				4				1		
	Team / bench																						
	<b>TOTAL</b>	<b>25/41</b>	<b>61</b>	<b>12/19</b>	<b>2/5</b>	<b>2/7</b>	<b>2/3</b>	<b>3/3</b>	<b>4/4</b>	<b>0/0</b>	<b>1</b>	<b>0</b>	<b>2</b>	<b>3</b>	<b>11</b>	<b>2</b>	<b>8</b>	<b>0</b>	<b>0</b>	<b>3</b>	<b>0</b>	<b>0</b>	<b>0</b>

Goalkeepers		Saves / shots							
#	Surname and name	Tot.	%	9m	6m	Wng.	7m	FB	Brk.
21	DOS SANTOS Rayane	2/10	20	0/1	0/1	1/1	1/3		0/2
27	OLIVEIRA Jessica	11/28	39	3/4	3/4	3/3	0/5	2/6	0/6
72	KIELING Sophia								
	<b>TOTAL</b>	<b>13/38</b>	<b>34</b>	<b>3/5</b>	<b>3/5</b>	<b>4/4</b>	<b>1/8</b>	<b>2/6</b>	<b>0/8</b>

Coach: **Mauricio Antonucci**

### Attack

	Shooting	9m	6m	Wing	Trn.	Ear. 7m	Ear. 2m
<b>On defense 6-0</b>	20/35	12/19	2/5	2/7	11	2	3
<b>In transition</b>	3/3				0	0	0

### Defense

	Shooting	9m	6m	Wing	Steals	Cm. 7m.	2m
<b>Defense 6-0</b>	12/25	2/7	2/5	0/5	2	8	3
<b>In transition</b>	4/6				0	0	0

### Shooting statistics

Position	Goals	Saved	Missed	Post	Blocked	Total	%
<b>Back (9m)</b>	12	5	1	0	1	19	63
<b>Line (6m)</b>	2	2	0	1	0	5	40
<b>Wing</b>	2	4	0	1	0	7	29
<b>7m penalties</b>	2	0	0	1	0	3	67
<b>Fastbreak</b>	3	0	0	0	0	3	100
<b>Breakthrough</b>	4	0	0	0	0	4	100
<b>Total</b>	<b>25</b>	<b>11</b>	<b>1</b>	<b>3</b>	<b>1</b>	<b>41</b>	<b>61</b>

# Jersey    Tot. Goals/Attempts    6m Shooting 6m    9m Shooting 9m    Wng. Shooting wing    FB Fastbreak    7m 7m penalties  
 Brk Breakthrough    LD Long distance    As. Assists    PC Pass clear chance    E7 Earned 7m    Tr. Turnovers    St. Steals  
 2m 2m suspensions    C7 Committed 7m    E2 Earned 2m sus.    YC Yellow cards    RC Red card    BC Blue card    Blk. Blocked shots

Detailed statistics

**Goes 25 - 25 E.C. Pinheiros**  
(16 - 15) (9 - 10)

15.6.2026. 16:00  
Attendance: 500  
CEO (Asunción)

Referees: Santiago Correa / Agustin Conberse

### Shot distribution

**3 I. Pessatto**


**6 J. Monteiro**

		1/1

**8 G. Mendes**

1/1		

**9 A. Rodrigues**

0/1		1/1
1/1		
	2/2	0/1

**11 B. Monteiro**

		1/1
	0/2	

**15 R. Gregorio**

2/3		

**17 B. Rodrigues**


**20 N. Teixeira**


**28 L. Vitor**

	1/1	0/1
0/1	2/2	

**33 L. Freitas**


**71 R. Luciana**

1/1		
3/3		
1/1	1/2	0/1

**88 M. Merlin**

	1/1	
1/1	0/1	
3/3		

**91 L. Ventura**

		1/1
		0/1
1/1		

3 post

1 miss. 1 block

### TOTAL

3/5	1/1	3/3
6/6	1/2	0/2
5/6	5/8	1/3

3 post 1 miss. 1 block

### Shot distribution goalkeepers

**21 R. Dos Santos**

1/2		0/2
0/1	1/4	0/1

**27 J. Oliveira**

1/3	2/3	0/1
0/4	2/2	1/5
	3/5	2/4

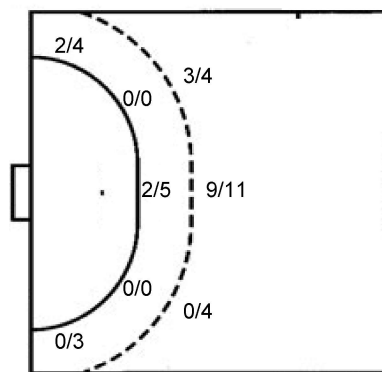
**72 S. Kieling**


**TOTAL**

1/3	2/3	0/1
1/6	2/2	1/7
0/1	4/9	2/5

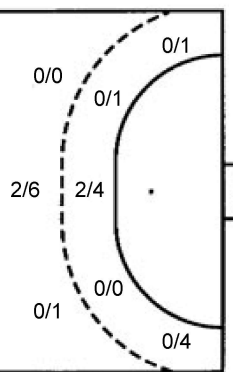
### Shots by position

**ATTACK**



7m 2/3  
Fastbreak 3/3  
Breakthrough 4/4

**DEFENSE**



7m 7/8  
Fastbreak 4/6  
Breakthrough 8/8

#	Jersey	Tot.	Goals/Attempts	6m	Shooting 6m	9m	Shooting 9m	Wng.	Shooting wing	FB	Fastbreak	7m	7m penalties
Brk	Breakthrough	LD	Long distance	As.	Assists	PC	Pass clear chance	E7	Earned 7m	Tr.	Turnovers	St.	Steals
2m	2m suspensions	C7	Committed 7m	E2	Earned 2m sus.	YC	Yellow cards	RC	Red card	BC	Blue card	Blk.	Blocked shots