



# IHF Men's Emerging Nations Championship

## Tbilisi (Georgia)

### Group A



Match Team Statistics

**Great Britain 28 - 23 P.R. China**

12.6.2019. 12:00

Match No. 20

(12 - 12) (16 - 11)

Attendance: 50

Tbilisi Sport Palace

Referees: Mads Hermann (DEN) / Jesper Madsen (DEN)

### Great Britain

Players		Goals / shots										Attack				Def.			Penalties			TP		
#	Surname and name	S	Tot.	%	9m	6m	Wing	7m	FB	Brk.	LD	As.	E7	E2	TF	St.	C7	Blk	YC	2m	RC		BC	
1	INSOU Owen	S																						55:26
2	MORLEY Harry		0/1	0				0/1																0:58
3	HOWARD Benjamin																							
4	THOMAS Ryan																							
5	PRICE Jordan William	S	0/1	0					0/1						1		1	1						37:02
6	WHITE Christopher	S	4/6	67	3/4	1/1		0/1				1	1	1										60:00
8	VENABLES Tobias																							
12	MCCLELLAND Craig																							
13	EDGAR Sebastian	S	12/15	80	1/2		4/5	4/4	3/4			3			1									60:00
14	GREEN Nathanael		4/6	67	2/4		1/1			1/1					6									27:04
15	TYLER Ollie	S	3/4	75		3/4							1	2	1		1	1			2			60:00
18	PAULIN Samuel																	1						
19	DA SILVA Joshua	S	3/5	60	2/3		0/1			1/1		5	2	1	1	1	1							60:00
20	NEGRETE LINDSAY Brian	S	2/5	40		1/1	1/3	0/1				2	3	2	4	1					1			59:30
Team / bench																								
UKUPNO			28/43	65	8/13	5/6	6/10	4/7	3/5	2/2	0/0	11	7	6	14	2	3	3	0	3	0	0		

Goalkeepers		Saves / shots									
#	Surname and name	Tot.	%	9m	6m	Wing	7m	FB	Brk.	LD	
1	INSOU Owen	11/34	32	7/13	0/5	3/7	1/3	0/2	0/4		
12	MCCLELLAND Craig										
TOTAL		11/34	32	7/13	0/5	3/7	1/3	0/2	0/4	0/0	

Coach: **Ricardo Vasconcelos**

Number of attacks: 53, Efficiency: 53%, Average Duration: 35,5 seconds

### Attack by type of defense

	Shots	9m	6m	Wing	TF	E7	E2
On def. 6-0	14/23	4/9	2/3	6/9	11	6	6
On def. 5-1	6/7	4/4	2/2	0/1	2	1	0
On def. 4-2	1/1	0/0	1/1	0/0	1	0	0
Fastbreak	3/5				0	0	0

### Defense by type

	Total	9m	6m	Wing	Stl.	C7	2m
Def. 6-0	5/9	1/4	2/2	0/1	2	2	1
Def. 5-1	14/27	5/16	3/3	4/6	0	1	2
Fastbreak	2/2				0	0	0

### Attack with goalkeeper out

	Attack				Reaction		
	Att.	Eff.	Shots	TF	FB	LD	Tot.
GK out pl. minority	1	0%	0/0	1	0/0	0/0	0/0
GK in	52	54%	28/43	13	2/2	0/2	2/4

GK out attack is counted if one part or whole attack was GK out

### Attack with player superiority/minority

	Attack				Reaction		
	Att.	Eff.	Shots	TF	FB	LD	Tot.
Superiority +2	2	50%	1/2	0	0/0	0/0	0/0
Superiority +1	13	69%	9/13	2	0/0	0/0	0/0
Normal	33	48%	16/24	11	2/2	0/1	2/3
Minority -1	4	50%	2/3	1	0/0	0/1	0/1

Player superiority counted at the end of attack (in case it changes during attack)

### Defense with opponent goalkeeper out

	Attack				Reaction		
	Att.	Eff.	Shots	TF	FB	LD	Tot.
GK in	53	43%	23/43	15	3/5	0/0	3/5

### Defense with player superiority/minority

	Attack				Reaction		
	Att.	Eff.	Shots	TF	FB	LD	Tot.
Minority -1	5	80%	4/6	0	0/0	0/0	0/0
Normal	35	43%	15/28	10	2/4	0/0	2/4
Superiority +1	11	27%	3/6	5	1/1	0/0	1/1
Superiority +2	2	50%	1/3	0	0/0	0/0	0/0

# Jersey number Tot. Total shooting 6m 6m (line) shooting 9m 9m shooting Wng. Wing shooting FB Fastbreak sh. 7m 7m penalty sh.  
 Brk. Breakthrough sh. LD Long distance sh. As. Assists E7 Earned 7m pen. TF Technical Faults St. Steals 2m 2m punishments  
 C7. Committed 7m E2 Earned 2m pun. YC. Yellow cards RC Red cards BC Blue cards Blk. Blocks S Starting Line-up



# IHF Men's Emerging Nations Championship

## Tbilisi (Georgia)

### Group A



Match Team Statistics  
Match No. 20

**Great Britain 28 - 23 P.R. China**  
(12 - 12) (16 - 11)

12.6.2019. 12:00  
Attendance: 50  
Tbilisi Sport Palace

Referees: Mads Hermann (DEN) / Jesper Madsen (DEN)

### Shot distribution by player

**2 H. Morley**


1 post

**3 B. Howard**


**4 R. Thomas**


**5 J. Price**

0/1		

**6 C. White**

		1/2
	2/3	1/1

**8 T. Venables**


**13 S. Edgar**

2/2		
2/2		1/1
0/1	2/3	5/5

1 miss.

**14 N. Green**

		0/1
		2/2
1/1		1/1

1 miss.

**15 O. Tyler**

	1/1	2/2

1 miss.

**18 S. Paulin**


**19 J. Da Silva**

	0/1	
1/1		0/1
1/1		1/1

**20 B. Negrete Lindsay**

1/1	0/1	
0/1		1/1

1 post

**TOTAL**

3/3	0/2	0/1
3/5		5/7
2/3	5/7	10/10

2 post 3 miss.

### Saves distribution goalkeepers

**1 O. Insou**

	2/2	0/1
0/5	1/2	0/3
1/6	5/6	2/7

**12 C. McClelland**

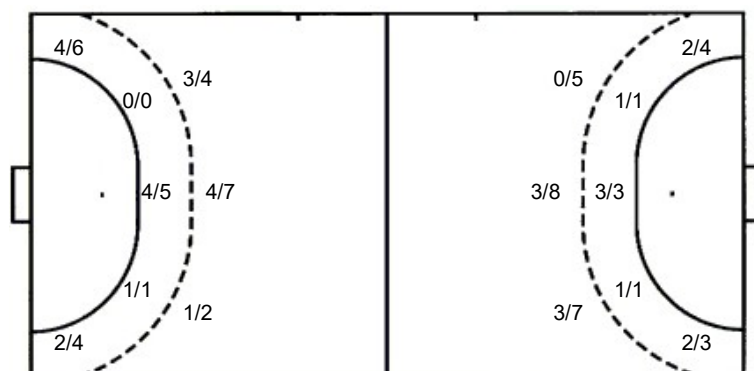

**TOTAL**

	2/2	0/1
0/5	1/2	0/3
1/6	5/6	2/7

### Shots by position

ATTACK

DEFENSE



7m penalties 4/7  
Fastbreak 3/5  
Breakthrough 2/2  
Long dist. 0/0

7m penalties 2/3  
Fastbreak 2/2  
Breakthrough 4/4  
Long dist. 0/2

### Shooting statistics

Position	Goals	Sav.	Miss.	Post	Blk.	Total	%
Back (9m)	8	3	2	0	0	13	62
Line (6m)	5	0	1	0	0	6	83
Wing	6	3	0	1	0	10	60
7m penalties	4	2	0	1	0	7	57
Fastbreak	3	2	0	0	0	5	60
Breakthrough	2	0	0	0	0	2	100
<b>Total</b>	<b>28</b>	<b>10</b>	<b>3</b>	<b>2</b>	<b>0</b>	<b>43</b>	<b>65</b>

# Jersey number  
Brk. Breakthrough sh.  
C7. Committed 7m  
Tot. Total shooting  
LD Long distance sh.  
E2 Earned 2m pun.  
6m 6m (line) shooting  
As. Assists  
Yc. Yellow cards  
9m 9m shooting  
E7 Earned 7m pen.  
RC Red cards  
Wng. Wing shooting  
TF Technical Faults  
BC Blue cards  
FB Fastbreak sh.  
St. Steals  
Blk. Blocks  
7m 7m penalty sh.  
2m 2m punishments  
S Starting Line-up



# IHF Men's Emerging Nations Championship

## Tbilisi (Georgia)

### Group A



Match Team Statistics

**Great Britain 28 - 23 P.R. China**

12.6.2019. 12:00

Match No. 20

(12 - 12) (16 - 11)

Attendance: 50

Tbilisi Sport Palace

Referees: Mads Hermann (DEN) / Jesper Madsen (DEN)

### P.R. China

Players		Goals / shots										Attack				Def.			Penalties			TP		
#	Surname and name	S	Tot.	%	9m	6m	Wing	7m	FB	Brk.	LD	As.	E7	E2	TF	St.	C7	Blk	YC	2m	RC		BC	
1	HE Xinian																							8:58
3	WANG Penghao																							
5	HE Zheng	S	1/2	50			1/2									1	3			2				60:00
7	ZHAO Wenxuan		1/1	100		1/1										1				1				25:40
8	XIE Qinglong	S	4/4	100		4/4								1	1	2						1		27:56
10	LI Zhaopeng	S	4/7	57	2/5			2/2				4			4					1				39:00
11	GUO Shiwei		1/2	50	0/1					1/1														6:24
12	WANG Quan	S	0/1	0							0/1													51:02
13	WANG Yu																							
18	LI Shuang	S	6/11	55	3/8		1/1		1/1	1/1		2			6	3								60:00
22	HUANG Peijie		4/7	57			2/4	0/1		2/2		1	1			1								53:37
88	WANG Juncheng	S	1/6	17	1/6										1									34:06
97	ZHANG Jianjie		0/1	0							0/1	1	1	2							1			26:13
98	CHEN Xu	S	1/1	100					1/1			1									1			27:04
	Team / bench																			1	1			
	UKUPNO		23/43	53	6/20	5/5	4/7	2/3	2/2	4/4	0/2	9	3	3	15	0	7	0		1	7	1	0	

Goalkeepers		Saves / shots									
#	Surname and name	Tot.	%	9m	6m	Wing	7m	FB	Brk.	LD	
1	HE Xinian	1/4	25	0/1	0/2	1/1					
12	WANG Quan	9/34	26	3/10	0/3	2/8	2/6	2/5	0/2		
	TOTAL	10/38	26	3/11	0/5	3/9	2/6	2/5	0/2	0/0	

Coach: **Xinchen Zhu**

Number of attacks: 53, Efficiency: 43%, Average Duration: 32,3 seconds

### Attack by type of defense

	Shots	9m	6m	Wing	TF	E7	E2
On def. 6-0	5/9	1/4	2/2	0/1	5	2	1
On def. 5-1	14/27	5/16	3/3	4/6	10	1	2
Fastbreak	2/2				0	0	0

### Defense by type

	Total	9m	6m	Wing	Stl.	C7	2m
Def. 6-0	14/23	4/9	2/3	6/9	0	6	6
Def. 5-1	6/7	4/4	2/2	0/1	0	1	1
Def. 4-2	1/1	0/0	1/1	0/0	0	0	0
Fastbreak	3/5				0	0	0

### Attack with goalkeeper out

	Attack				Reaction		
	Att.	Eff.	Shots	TF	FB	LD	Tot.
GK in	53	43%	23/43	15	3/5	0/0	3/5

GK out attack is counted if one part or whole attack was GK out

### Attack with player superiority/minority

	Attack				Reaction		
	Att.	Eff.	Shots	TF	FB	LD	Tot.
Superiority +1	5	80%	4/6	0	0/0	0/0	0/0
Normal	35	43%	15/28	10	2/4	0/0	2/4
Minority -1	11	27%	3/6	5	1/1	0/0	1/1
Minority -2	2	50%	1/3	0	0/0	0/0	0/0

Player superiority counted at the end of attack (in case it changes during attack)

### Defense with opponent goalkeeper out

	Attack				Reaction		
	Att.	Eff.	Shots	TF	FB	LD	Tot.
GK out (7 on 6)	0	0%	0/0	0	0/0	0/0	0/0
GK in	52	54%	28/43	13	2/2	0/2	2/4

### Defense with player superiority/minority

	Attack				Reaction		
	Att.	Eff.	Shots	TF	FB	LD	Tot.
Minority -2	2	50%	1/2	0	0/0	0/0	0/0
Minority -1	13	69%	9/13	2	0/0	0/0	0/0
Normal	33	48%	16/24	11	2/2	0/1	2/3
Superiority +1	4	50%	2/3	1	0/0	0/1	0/1

# Jersey number Tot. Total shooting 6m 6m (line) shooting 9m 9m shooting Wng. Wing shooting FB Fastbreak sh. 7m 7m penalty sh.  
 Brk. Breakthrough sh. LD Long distance sh. As. Assists E7 Earned 7m pen. TF Technical Faults St. Steals 2m 2m punishments  
 C7. Committed 7m E2 Earned 2m pun. YC. Yellow cards RC Red cards BC Blue cards Blk. Blocks S Starting Line-up



# IHF Men's Emerging Nations Championship

## Tbilisi (Georgia)

### Group A



Match Team Statistics

Match No. 20

## Great Britain 28 - 23 P.R. China

(12 - 12) (16 - 11)

12.6.2019. 12:00

Attendance: 50

Tbilisi Sport Palace

Referees: Mads Hermann (DEN) / Jesper Madsen (DEN)

### Shot distribution by player

**3 P. Wang**


**5 Z. He**

	0/1	
1/1		

**7 W. Zhao**

	1/1	

**8 Q. Xie**

1/1		2/2

1/1 lob

**10 Z. Li**

		2/2
1/1	0/1	1/2

1 block

**11 S. Guo**

1/1	0/1	

**13 Y. Wang**


**18 S. Li**

2/2	1/1	
2/2		1/1

2 post 1 miss. 2 block

**22 P. Huang**

		1/1
1/1		1/1
0/1	0/1	0/1

1/1 lob

**88 J. Wang**

	0/1	
	0/3	1/1

1 post

**97 J. Zhang**


1 block

**98 X. Chen**

1/1		

**TOTAL**

	0/2	1/1
5/5	1/2	3/3
5/6	1/6	5/7

3 post 1 miss. 4 block 2/2 lob

### Saves distribution goalkeepers

**1 X. He**

		1/2
	0/2	

**12 Q. Wang**

0/3	2/2	1/1
2/5		1/5
1/3	2/5	0/10

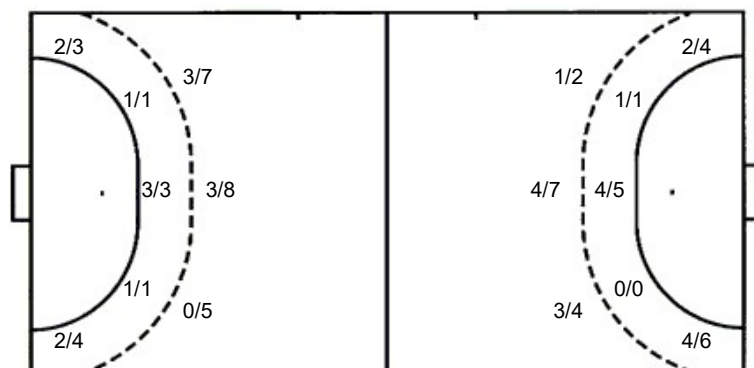
**TOTAL**

0/3	2/2	1/1
2/5		2/7
1/3	2/7	0/10

### Shots by position

**ATTACK**

**DEFENSE**



7m penalties 2/3  
Fastbreak 2/2  
Breakthrough 4/4  
Long dist. 0/2

7m penalties 4/7  
Fastbreak 3/5  
Breakthrough 2/2  
Long dist. 0/0

### Shooting statistics

Position	Goals	Sav.	Miss.	Post	Blk.	Total	%
Back (9m)	6	7	1	3	3	20	30
Line (6m)	5	0	0	0	0	5	100
Wing	4	3	0	0	0	7	57
7m penalties	2	1	0	0	0	3	67
Fastbreak	2	0	0	0	0	2	100
Breakthrough	4	0	0	0	0	4	100
<b>Total</b>	<b>23</b>	<b>11</b>	<b>1</b>	<b>3</b>	<b>3</b>	<b>41</b>	<b>56</b>

# Jersey number    Tot. Total shooting    6m 6m (line) shooting    9m 9m shooting    Wng. Wing shooting    FB Fastbreak sh.    7m 7m penalty sh.  
 Brk. Breakthrough sh.    LD Long distance sh.    As. Assists    E7 Earned 7m pen.    TF Technical Faults    St. Steals    2m 2m punishments  
 C7. Committed 7m    E2 Earned 2m pun.    YC. Yellow cards    RC Red cards    BC Blue cards    Blk. Blocks    S Starting Line-up