



27th IHF Women's World Championship 2025

Main Round - Group IV, 3. round



27TH IHF WOMEN'S
**HANDBALL
WORLD
CHAMPIONSHIP**
THE NETHERLANDS & GERMANY 2025

Match Team Statistics

Match No. 88

Angola 26 - 24 Sweden

(10 - 10) (16 - 14)

7.12.2025. 18:00

Attendance: 6254

Westfalenhalle

Referees: Karim Gasmi (FRA) / Raouf Gasmi (FRA)

Shot distribution by player

2 V. Nenganga

0/1		
3/3	1/1	

2 post 1/1 lob

4 M. Tati

0/1 lob

5 L. Mario

1/1		

6 J. Machado

1/1		
1/1	0/1	

1 miss. 1/2 lob

7 D. Rosario

		1/1
2/2		1/2

8 H. Paulo

1/1		
3/4	0/1	4/4

2 miss.

9 N. Santos

		1/1
		0/1

0/1 lob

10 A. Kassoma

		1/1
1/2		

11 M. Quizelete

15 R. Mateus

77 B. Belo

88 B. Nunda

90 I. Guialo

2/2		0/1

2 post

TOTAL

2/2		2/2
2/3		1/3
11/13	1/3	5/6

4 post 3 miss. 2/5 lob

Saves distribution goalkeepers

1 M. Alberto

1/5	2/2	2/6
2/2	1/1	2/2
2/7	0/2	1/8

12 C. Miguel

0/1		

30 E. Paulo

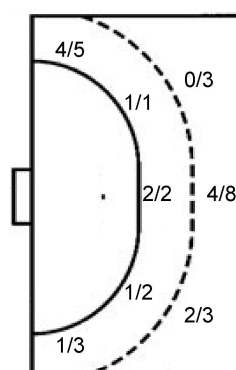
	1/2	

TOTAL

1/5	2/2	2/6
2/2	1/1	2/2
2/8	1/4	1/8

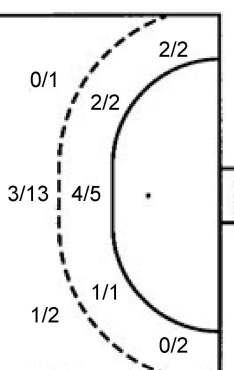
Shots by position

ATTACK



7m penalties 1/2
Fastbreak 1/2
Breakthrough 8/12
Long dist. 1/2

DEFENSE



7m penalties 4/6
Fastbreak 5/7
Breakthrough 2/7
Long dist. 0/1

Shooting statistics

Position	Goals	Sav.	Miss.	Post	Blk.	Total	%
Back (9m)	6	3	2	3	0	14	43
Line (6m)	4	1	0	0	0	5	80
Wing	5	3	0	0	0	8	63
7m penalties	1	1	0	0	0	2	50
Fastbreak	1	1	0	0	0	2	50
Breakthrough	8	2	1	1	0	12	67
Total	25	11	3	4	0	43	58

Jersey number Tot. Total shooting 6m 6m (line) shooting 9m 9m shooting Wng Wing shooting FB Fastbreak sh. 7m 7m penalty sh.
Brk. Breakthrough sh. LD Long distance sh. As. Assists PC Pass clear chance E7 Earned 7m pen. TF Technical faults St. Steals
2m 2m punishments C7. Committed 7m E2 Earned 2m pun. YC. Yellow cards R/B Red/Blue cards Blk. Blocks S Starting Line-up

Handball statistics and livescore by Toma-soft ltd (www.toma-soft.hr)



27th IHF Women's World Championship 2025



Main Round - Group IV, 3. round

Match Team Statistics

Angola 26 - 24 Sweden

7.12.2025. 18:00

Match No. 88

(10 - 10) (16 - 14)

Attendance: 6254

Westfalenhalle

Referees: Karim Gasmi (FRA) / Raouf Gasmi (FRA)

Sweden

#	Surname and name	S	Goals / shots								Attack					Def.			Penalties				TP								
			Tot.	%	9m	6m	Wing	7m	FB	Brk.	LD	As.	PC	E7	E2	TF	St.	C7	Blk	YC	2m	R		B							
1	BUNDSSEN Johanna	S	0/1	0											0/1	2	2														38:40
2	LERBY Clara		6/7	86		2/2		3/4	1/1																						21:23
3	KOPPANG Nina		1/6	17	1/4											1															30:13
7	BLOHM Linn	S	1/2	50		1/2									1																54:55
8	ROBERTS Jamina	S	3/7	43	0/2	1/1									6	1	2	2	3												50:45
10	LUNDSTRÖM Mathilda		1/2	50		1/1	0/1																								19:21
11	AXNÉR Tyra		0/3	0	0/3																										6:30
12	IDÉHN Filippa																														16:18
23	LINDKVIST Emma	S	2/4	50	1/2	1/1									1		2	2	3												46:34
24	HAGMAN Nathalie	S	5/9	56			0/1	1/2	4/6								1														40:39
27	KYLBERG Thea																														
29	THORLEIFSDOTTIR Kristín	S	1/2	50	1/2										1																27:27
38	HANSSON Elin	S	2/2	100			2/2																								38:56
40	MATTHIJS HOLMBERG Vilma																														
42	CARLSSON Jenny		1/3	33	1/3										2	1															9:48
49	LÖFQVIST Olivia		1/1	100		1/1																									18:31
	Team / bench																														
	TOTAL		24/49	49	4/16	7/8	2/4	4/6	5/7	2/7	0/1	13	5	5	4	10	6	2	0	1	1	0	0								

#	Surname and name	Saves / shots								
		Tot.	%	9m	6m	Wing	7m	FB	Brk.	LD
1	BUNDSSEN Johanna	6/22	27	2/5	1/3	1/4		0/1	2/9	
12	IDÉHN Filippa	5/14	36	1/4	0/2	2/4	1/2	1/1	0/1	
	TOTAL	11/36	31	3/9	1/5	3/8	1/2	2/2	2/10	0/0

Coach: Tomas Axné

Number of attacks: 56, Efficiency: 43%, Average Duration: 26.70 seconds

Attack by type of defense

	Shots	9m	6m	Wing	TF	E7	E2
On def. 6-0	15/35	4/16	7/8	2/4	10	5	4
Fastbreak	5/7				0	0	0

Defense by type

	Total	9m	6m	Wing	Stl.	C7	2m
Def. 6-0	21/37	6/14	3/4	5/8	5	2	0
Def. press.	2/2	0/0	1/1	0/0	1	0	0
Fastbreak	1/2				0	0	1

Attack with superiority / minority / goalkeeper out

	Attack				Reaction		
	Att.	Eff.	Shots	TF	FB	LD	Tot.
7 on 6 (GK out)	15	33%	5/11	4	0/1	1/2	1/3
6 on 6 (GK out)	2	50%	1/2	0	0/0	0/0	0/0
6 on 6	29	38%	11/24	5			
7 on 5 (GK out)	2	100%	2/2	0	0/0	0/0	0/0
6 on 5	6	67%	4/5	1			
6 on 4	2	50%	1/2	0			

Player superiority / GK out counted at the end of attack (in case it changes during attack)

Defense with superiority / minority / goalkeeper out

	Attack				Reaction		
	Att.	Eff.	Shots	TF	FB	LD	Tot.
7 on 6 (GK out)	7	14%	1/5	2	1/1	0/1	1/2
6 on 6 (GK out)	6	67%	4/5	1	0/0	0/0	0/0
5 on 6 (GK out)	1	100%	1/1	0	0/0	0/0	0/0
6 on 6	40	45%	18/30	10			
6 on 5	2	100%	2/2	0			
4 on 6	1	0%	0/0	1			

Numbers show attacking numbers of opponent. Lower efficiency of opponent means better defense of this team

Jersey number Tot. Total shooting 6m 6m (line) shooting 9m 9m shooting Wng Wing shooting FB Fastbreak sh. 7m 7m penalty sh.
 Brk. Breakthrough sh. LD Long distance sh. As. Assists PC Pass clear chance E7 Earned 7m pen. TF Technical faults St. Steals
 2m 2m punishments C7. Committed 7m E2 Earned 2m pun. YC. Yellow cards R/B Red/Blue cards Blk. Blocks S Starting Line-up



27th IHF Women's World Championship 2025

Main Round - Group IV, 3. round



27TH IHF WOMEN'S
**HANDBALL
WORLD
CHAMPIONSHIP**
THE NETHERLANDS & GERMANY 2025

Match Team Statistics

Match No. 88

Angola 26 - 24 Sweden

(10 - 10) (16 - 14)

7.12.2025. 18:00

Attendance: 6254

Westfalenhalle

Referees: Karim Gasmi (FRA) / Raouf Gasmi (FRA)

Shot distribution by player

2 C. Lerby 2/2 1 post 2/2 1/1 1/1	3 N. Koppang 1/1 0/1 0/2 2 block 1/1 0/1 0/2	7 L. Blohm 1/2 1/2	8 J. Roberts 1/1 1/2 0/1 1/1 1 post 1 miss.	10 M. Lundström 1/1 1 post	11 T. Axné 0/1 1 miss. 1 block	23 E. Lindkvist 0/1 1/1 1 post
24 N. Hagman 1/1 0/1 1/1 2/4 1/1 1 miss.	27 T. Kylberg	29 K. Thorleifsdottir 1/1 1 block	38 E. Hansson 2/2	40 V. Matthijs Holmberg	42 J. Carlsson 0/1 0/1 1/1	49 O. Löfqvist 1/1

TOTAL

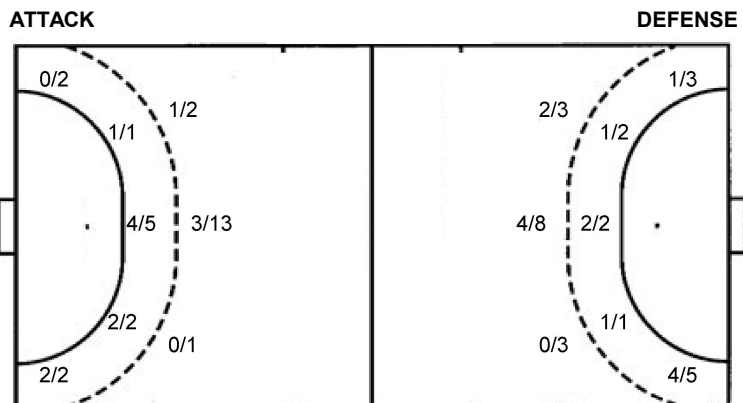
4/5	0/2	4/6
0/2		0/2
6/8	3/4	7/8

4 post 3 miss. 4 block

Saves distribution goalkeepers

1 J. Bundsen 0/1 0/1 0/1 1/1 1/8 2/2 0/4	12 F. Idéhn 0/1 0/1 1/2 1/2 1/5 1/2	TOTAL 0/2 0/2 1/3 2/3 2/13 2/2 1/6
--	---	--

Shots by position



7m penalties	4/6	7m penalties	1/2
Fastbreak	5/7	Fastbreak	1/2
Breakthrough	2/7	Breakthrough	8/12
Long dist.	0/1	Long dist.	1/2

Shooting statistics

Position	Goals	Sav.	Miss.	Post	Blk.	Total	%
Back (9m)	4	4	2	2	4	16	25
Line (6m)	7	1	0	0	0	8	88
Wing	2	1	0	1	0	4	50
7m penalties	4	1	0	1	0	6	67
Fastbreak	5	1	1	0	0	7	71
Breakthrough	2	5	0	0	0	7	29
Total	24	13	3	4	4	48	50

Jersey number Tot. Total shooting 6m 6m (line) shooting 9m 9m shooting Wng Wing shooting FB Fastbreak sh. 7m 7m penalty sh.
 Brk. Breakthrough sh. LD Long distance sh. As. Assists PC Pass clear chance E7 Earned 7m pen. TF Technical faults St. Steals
 2m 2m punishments C7. Committed 7m E2 Earned 2m pun. YC. Yellow cards R/B Red/Blue cards Blk. Blocks S Starting Line-up



27th IHF Women's World Championship 2025



27TH IHF WOMEN'S
**HANDBALL
WORLD
CHAMPIONSHIP**
THE NETHERLANDS & GERMANY 2025

Main Round - Group IV, 3. round

Match Team Statistics

Match No. 88

Angola 26 - 24 Sweden

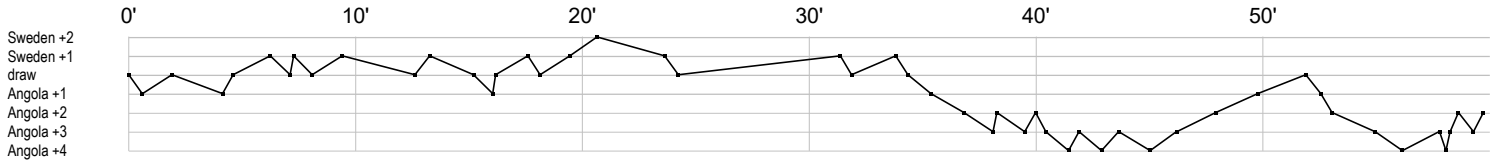
(10 - 10) (16 - 14)

7.12.2025. 18:00

Attendance: 6254

Westfalenhalle

Referees: Karim Gasmi (FRA) / Raouf Gasmi (FRA)



Angola

1	Alberto M	s r r r r r r r r r r s s s s r s r s s r s r r r r sfr r r r r s s
2	Nenganga V	t f g g f f g a g f pb b g x
4	Tati M	f
5	Mario L	g
6	Machado J	g c c t a f b a f t 2 f a a p2c g t gt
7	Rosario D	g g g t g f
8	Paulo H	g f f t bt a g a p c f p t g g gi g f a g g a
9	Santos N	g 2 ff
10	Kassoma A	a x x x f g e t g e
11	Quizelete M	t t c2
12	Miguel C	r
15	Mateus R	
30	Paulo E	sr
77	Belo B	t t
88	Nunda B	fg
90	Guialo I	fg p

Sweden

1	Bundsén J	r r r r s pr s r r asr r r s s f asr r r r r p r
2	Lerby C	fg g g g g
3	Koppang N	g f f p f f f b
7	Blohm L	f a b g c b
8	Roberts J	p a g t f a g a t a f 2 g tei f iea fa
10	Lundström M	f t g
11	Axnér T	t f f f
12	Idéhn F	r r r r s sss s r r r r r
23	Lindkvist E	f e t t e ig t i g a f c
24	Hagman N	g y e g f g t g f fg f
27	Kylberg T	
29	Thorleifsdóttir	b a f g
38	Hansson E	g b g t b
40	Matthijs	
42	Carlsson J	a p g a f f
49	Löfqvist O	g

In game	g Goal scored	f Missed shot	a Assist	t Technical faults	b Steal
2 2min suspension	e Earned 7m	c Committed 7m	y Yellow card	r Red Card	k Blue card
i Earned 2min.	x Block	4 4min suspension	p Pass for clear chance	s Saved shot	r Received goal