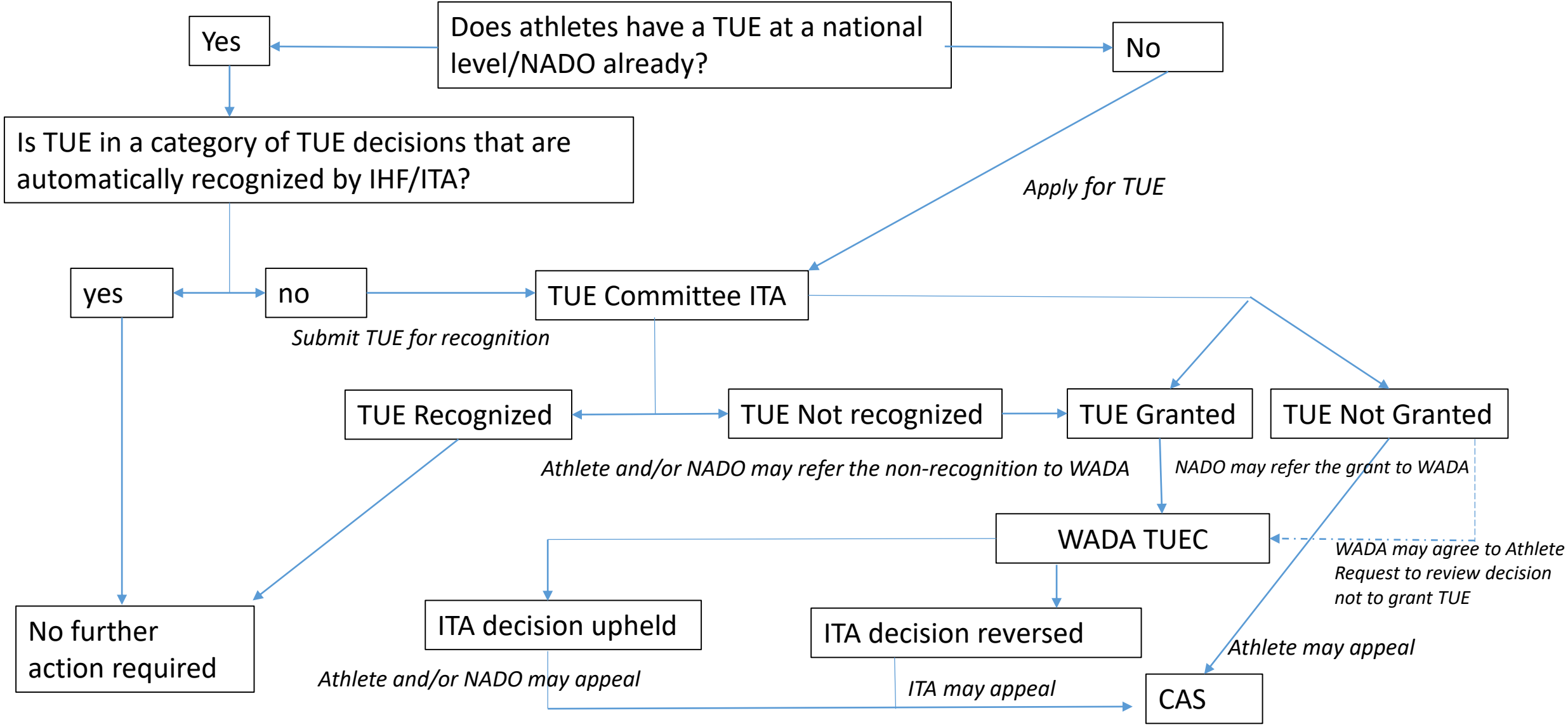
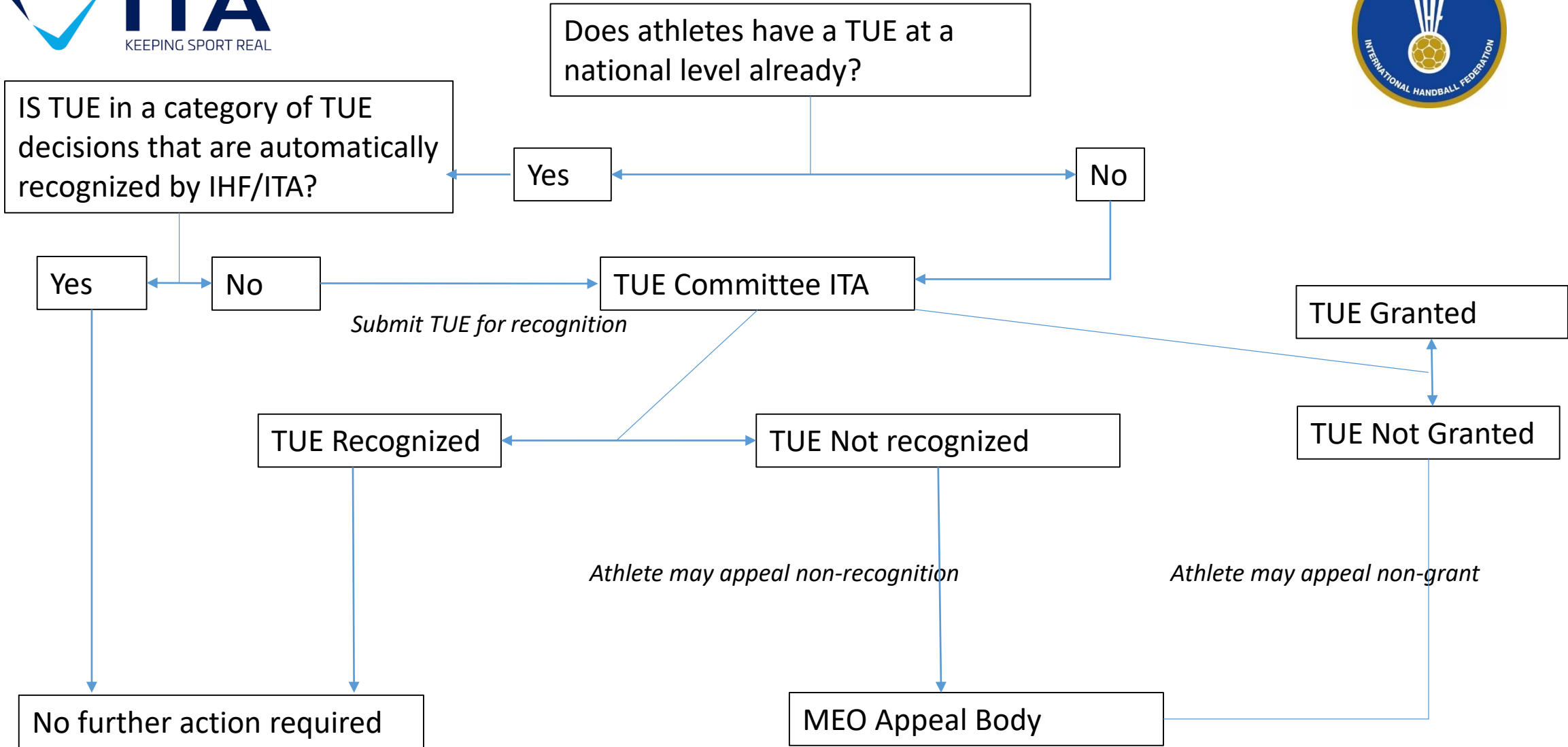


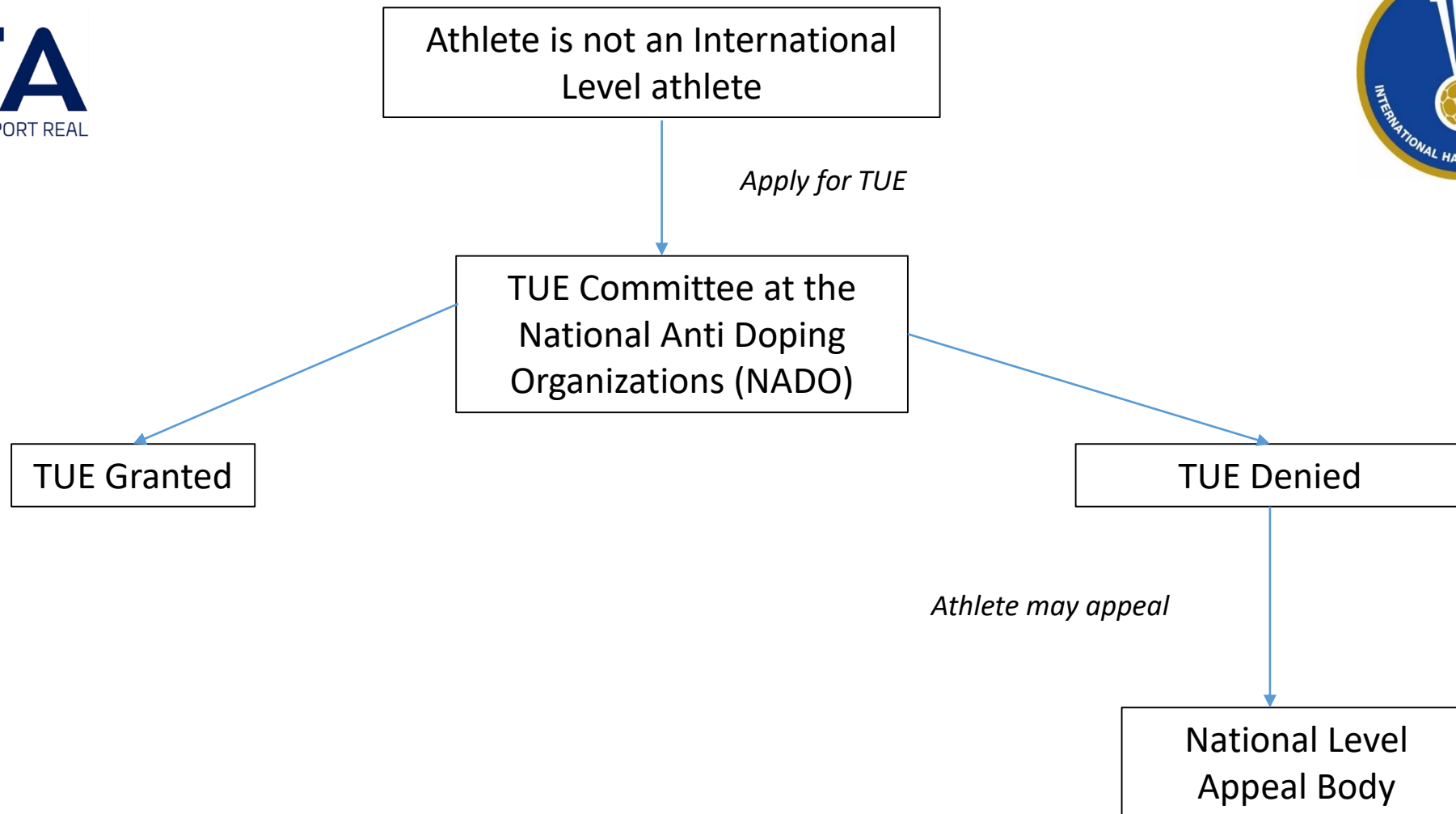
# TUE application for an International Level player (application through ITA/IHF)



# TUE application for an international level player for a Major Event in case the MEO has its own TUEs requirements (application through Major Event Organization CGF, CISM, FISU, IMGA, IOC, IWGA, Regional and Continental Games, GAISF)



**TUEs application process at a National Level**  
**– if Player is not an International Level when need or TUE arises**



Download the 2019 TUE Application form from the IHF website. The form is available in three languages: English, French and Spanish  
[http://ihf.info/en-us/thegame/anti-doping/therapeuticuseexemption\(tue\).aspx](http://ihf.info/en-us/thegame/anti-doping/therapeuticuseexemption(tue).aspx)

Complete your personal details and ask your doctor/specialist to complete the medication and case history details  
Your doctor/specialist will also need to attach supporting medical evidence to your application (eg. Test results, extracts from notes, etc)

Submit the completed form to the International Testing Agency (ITA) at [tue@ita.sport](mailto:tue@ita.sport) at least 30 days before your competition.  
In emergency situation, it may be possible for a TUE to be granted in less than 30 days.

Athletes have the right to appeal to WADA (within 21 days after the decision) as per ISTUE Article 8.0.  
If WADA refuses to review the decision, the athlete may appeal to CAS

PLAYERS HAVE THE FULL RESPONSIBILITY FOR THE PRESENCE OF A PROHIBITED SUBSTANCE IN THEIR BODY.  
See the current WADA Prohibited List (2019) for further details.



### International Level Athletes:

- Players who compete in IHF-organized events or when IHF is the ruling body
- All Players in the IHF Registered Testing Pool and the Testing Pool

### List of IHF events:

- Men's & Women's Senior World Championships
- Men's Junior U21 World Championships
- Men's Youth U19 World Championships
- Women's Junior U20 World Championships
- Women's Junior U18 World Championships
- Men's & Women's Beach Handball World Championships
- Men's & Women's Beach Handball Youth U17 World Championships
- Men's and Women's Super Globe



## Recognition of National TUEs for International-level competitions



- If the Player has a TUE granted by his/her National Anti-Doping Organization and wishes that such TUE is made valid also for the IHF Events, the Player needs to inform the IHF / ITA either via ADAMS or by email at [tue@ita.sport](mailto:tue@ita.sport)
- If the national TUE is reported by the NADO in compliance with the International Standard for Therapeutic Use Exemptions, that TUE shall be valid also for the IHF Events