



# IHF Women's Youth (U18) World Championship

## Poland (Kielce)

### Semifinal



Match Team Statistics

## Sweden 23 - 29 Russia

18.8.2018. 20:00

Match No. 88

(13 - 17) (10 - 12)

Attendance: 500

Hall Legionow

Referees: Bartosz Leszczynski (POL) / Marcin Piechota (POL)

### Sweden

#	Surname and name	S	Goals / shots									Attack				Def.			Penalties				TP	
			Tot.	%	9m	6m	Wing	7m	FB	Brk.	LD	As.	E7	E2	TF	St.	C7	Blk	YC	2m	RC	BC		
1	LUNDAHL Wilma																							0:08
5	ALM Tova																							2:56
6	CARDELL Lina		0/1	0			0/1																	32:08
7	MORENO Jackie	S	2/3	67			2/3								1									27:34
8	WAHLSTRÖM Emma																							2:13
12	HULTBERG-DAHLGREN Josefine	S												1			1					1		51:18
13	WALLENBERG Ebba	S	1/1	100			1/1										1							25:02
14	SANDBERG Malin		4/8	50	2/6	1/1								2			3		2			1		36:52
15	DAHLSTRÖM Cornelia		1/2	50	1/1						0/1						2		1	1	1	1		33:13
16	ESPLING-EK Tilda																							4:35
18	JARVIN Zandra	S	0/2	0	0/2									2			1							14:47
19	DANO Nina	S	5/9	56	0/3	0/1					5/5						1							24:28
20	SJÖSTRAND HALLMAN Amanda	S	0/1	0		0/1										1	1			1		1		52:26
22	SCHELIN Wilma														1									25:47
23	ANDERSSON Isabelle	S	7/13	54	3/8	1/2								3	3	1	6		1	1	1			54:52
24	DAHLBERG Kajsa		3/3	100															1	1				31:41
	Team / bench																						1	
	UKUPNO		23/43	53	6/20	2/5	3/5	5/6	3/3	4/4	0/0			11	5	3	15		1	6	3	3	4	0

#	Surname and name	Saves / shots								
		Tot.	%	9m	6m	Wing	7m	FB	Brk.	LD
1	LUNDAHL Wilma	0/3	0	0/1	0/1		0/1			
12	HULTBERG-DAHLGREN Josefine	11/32	34	6/14	0/3	3/8	0/2			2/5
16	ESPLING-EK Tilda	0/4	0	0/1			0/3			
	TOTAL	11/39	28	6/16	0/4	3/8	0/6	0/0	2/5	0/0

Coach: Niklas Harris

Number of attacks: 58, Efficiency: 40%, Average Duration: 28,0 seconds

### Attack by type of defense

	Shots	9m	6m	Wing	TF	E7	E2
On def. 6-0	13/29	5/17	2/4	2/4	13	5	3
On def. 5-1	2/5	1/3	0/1	1/1	2	0	0
Fastbreak	3/3				0	0	0

### Defense by type

	Total	9m	6m	Wing	Stl.	C7	2m
Def. 6-0	20/43	8/22	4/4	5/10	1	5	4
Def. 5-1	1/1	1/1	0/0	0/0	0	1	0
Def. 4-2	1/1	1/1	0/0	0/0	0	0	0
Fastbreak	0/0				0	0	0

### Attack with goalkeeper out

	Attack				Reaction		
	Att.	Eff.	Shots	TF	FB	LD	Tot.
GK out (7 on 6)	14	43%	6/12	2	0/0	0/0	0/0
GK out pl. minority	2	0%	0/1	0	0/0	0/0	0/0
GK in	42	40%	17/30	13	0/0	1/1	1/1

GK out attack is counted if one part or whole attack was GK out

### Attack with player superiority/minority

	Attack				Reaction		
	Att.	Eff.	Shots	TF	FB	LD	Tot.
Superiority +1	7	57%	4/6	1	0/0	0/0	0/0
Normal	36	39%	14/26	9	0/0	1/1	1/1
Minority -1	7	43%	3/5	2	0/0	0/0	0/0

Player superiority counted at the end of attack (in case it changes during attack)

### Defense with opponent goalkeeper out

	Attack				Reaction		
	Att.	Eff.	Shots	TF	FB	LD	Tot.
GK out (7 on 6)	0	0%	0/1	0	0/0	0/0	0/0
GK out pl. super.	0	0%	0/0	0	0/0	0/0	0/0
GK in	58	50%	29/51	12	3/3	0/0	3/3

### Defense with player superiority/minority

	Attack				Reaction		
	Att.	Eff.	Shots	TF	FB	LD	Tot.
Minority -1	7	29%	2/4	3	0/0	0/0	0/0
Normal	35	51%	18/33	8	3/3	0/0	3/3
Superiority +1	8	38%	3/6	1	0/0	0/0	0/0
Superiority +2	1	0%	0/0	0	0/0	0/0	0/0

# Jersey number Tot. Total shooting 6m 6m (line) shooting 9m 9m shooting Wng Wing shooting FB Fastbreak sh. 7m 7m penalty sh.  
 Brk. Breakthrough sh. LD Long distance sh. As. Assists E7 Earned 7m pen. TF Technical Faults St. Steals 2m 2m punishments  
 C7. Committed 7m E2 Earned 2m pun. YC. Yellow cards RC Red cards BC Blue cards Blk. Blocks S Starting Line-up



# IHF Women's Youth (U18) World Championship

## Poland (Kielce)

### Semifinal



Match Team Statistics  
Match No. 88

**Sweden 23 - 29 Russia**  
(13 - 17) (10 - 12)

18.8.2018. 20:00  
Attendance: 500  
Hall Legionow

Referees: Bartosz Leszczynski (POL) / Marcin Piechota (POL)

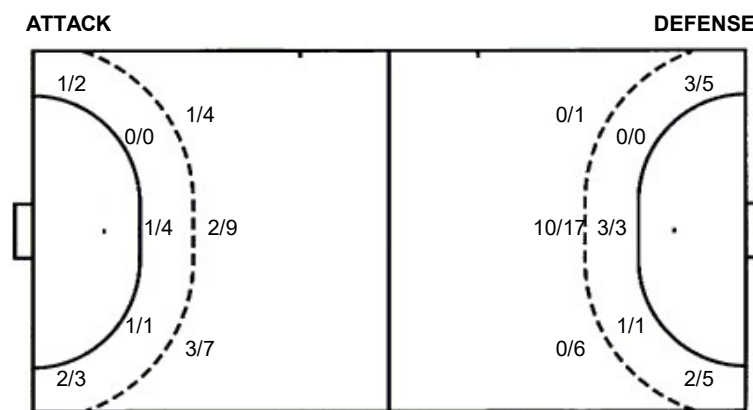
### Shot distribution by player

<b>5 T. Alm</b> <table border="1" style="width: 100%; height: 40px;"><tr><td></td><td></td><td></td></tr><tr><td></td><td></td><td></td></tr><tr><td></td><td></td><td></td></tr></table>										<b>6 L. Cardell</b> <table border="1" style="width: 100%; height: 40px;"><tr><td></td><td></td><td></td></tr><tr><td></td><td></td><td>0/1</td></tr><tr><td></td><td></td><td></td></tr></table>						0/1				<b>7 J. Moreno</b> <table border="1" style="width: 100%; height: 40px;"><tr><td>1/1</td><td></td><td>1/1</td></tr><tr><td></td><td></td><td></td></tr><tr><td></td><td></td><td></td></tr></table> <small>1 miss.</small>	1/1		1/1							<b>8 E. Wahlström</b> <table border="1" style="width: 100%; height: 40px;"><tr><td></td><td></td><td></td></tr><tr><td></td><td></td><td></td></tr><tr><td></td><td></td><td></td></tr></table>										<b>13 E. Wallenberg</b> <table border="1" style="width: 100%; height: 40px;"><tr><td></td><td></td><td></td></tr><tr><td></td><td></td><td></td></tr><tr><td>1/1</td><td></td><td></td></tr></table>							1/1			<b>14 M. Sandberg</b> <table border="1" style="width: 100%; height: 40px;"><tr><td></td><td></td><td></td></tr><tr><td></td><td></td><td>0/1</td></tr><tr><td>2/3</td><td></td><td>2/2</td></tr></table> <small>1 post 1 miss.</small>						0/1	2/3		2/2	<b>15 C. Dahlström</b> <table border="1" style="width: 100%; height: 40px;"><tr><td></td><td></td><td></td></tr><tr><td></td><td></td><td></td></tr><tr><td></td><td></td><td>1/2</td></tr></table>									1/2
		0/1																																																																			
1/1		1/1																																																																			
1/1																																																																					
		0/1																																																																			
2/3		2/2																																																																			
		1/2																																																																			
<b>18 Z. Jarvin</b> <table border="1" style="width: 100%; height: 40px;"><tr><td></td><td></td><td></td></tr><tr><td></td><td></td><td>0/1</td></tr><tr><td></td><td></td><td></td></tr></table> <small>1 block</small>						0/1				<b>19 N. Dano</b> <table border="1" style="width: 100%; height: 40px;"><tr><td>1/1</td><td></td><td>1/1</td></tr><tr><td>1/2</td><td>0/1</td><td></td></tr><tr><td>1/1</td><td></td><td></td></tr></table> <small>1 post 1 block 1/1 lob</small>	1/1		1/1	1/2	0/1		1/1			<b>20 A. Sjöstrand Hallman</b> <table border="1" style="width: 100%; height: 40px;"><tr><td></td><td></td><td>0/1</td></tr><tr><td></td><td></td><td></td></tr><tr><td></td><td></td><td></td></tr></table>			0/1							<b>22 W. Schelin</b> <table border="1" style="width: 100%; height: 40px;"><tr><td></td><td></td><td></td></tr><tr><td></td><td></td><td></td></tr><tr><td></td><td></td><td></td></tr></table>										<b>23 I. Andersson</b> <table border="1" style="width: 100%; height: 40px;"><tr><td></td><td></td><td>1/1</td></tr><tr><td>1/1</td><td>0/1</td><td>1/3</td></tr><tr><td></td><td>2/2</td><td>2/2</td></tr></table> <small>3 miss.</small>			1/1	1/1	0/1	1/3		2/2	2/2	<b>24 K. Dahlberg</b> <table border="1" style="width: 100%; height: 40px;"><tr><td></td><td></td><td></td></tr><tr><td>1/1</td><td></td><td></td></tr><tr><td></td><td>1/1</td><td>1/1</td></tr></table>				1/1				1/1	1/1	<b>TOTAL</b> <table border="1" style="width: 100%; height: 40px;"><tr><td>2/2</td><td></td><td>3/4</td></tr><tr><td>3/4</td><td>0/2</td><td>1/6</td></tr><tr><td>4/5</td><td>3/3</td><td>6/7</td></tr></table> <small>2 post 5 miss. 2 block 1/1 lob</small>	2/2		3/4	3/4	0/2	1/6	4/5	3/3	6/7
		0/1																																																																			
1/1		1/1																																																																			
1/2	0/1																																																																				
1/1																																																																					
		0/1																																																																			
		1/1																																																																			
1/1	0/1	1/3																																																																			
	2/2	2/2																																																																			
1/1																																																																					
	1/1	1/1																																																																			
2/2		3/4																																																																			
3/4	0/2	1/6																																																																			
4/5	3/3	6/7																																																																			

### Saves distribution goalkeepers

<b>1 W. Lundahl</b> <table border="1" style="width: 100%; height: 40px;"><tr><td>0/1</td><td></td><td></td></tr><tr><td></td><td></td><td></td></tr><tr><td>0/1</td><td>0/1</td><td></td></tr></table>	0/1						0/1	0/1		<b>12 J. Hultberg-Dahlgren</b> <table border="1" style="width: 100%; height: 40px;"><tr><td>1/4</td><td>1/1</td><td>2/2</td></tr><tr><td>1/3</td><td>0/1</td><td>1/8</td></tr><tr><td>3/9</td><td></td><td>1/4</td></tr></table>	1/4	1/1	2/2	1/3	0/1	1/8	3/9		1/4	<b>16 T. Espling-Ek</b> <table border="1" style="width: 100%; height: 40px;"><tr><td></td><td></td><td>0/1</td></tr><tr><td></td><td></td><td></td></tr><tr><td>0/1</td><td></td><td>0/2</td></tr></table>			0/1				0/1		0/2	<b>TOTAL</b> <table border="1" style="width: 100%; height: 40px;"><tr><td>1/5</td><td>1/1</td><td>2/3</td></tr><tr><td>1/3</td><td>0/1</td><td>1/8</td></tr><tr><td>3/11</td><td>0/1</td><td>1/6</td></tr></table>	1/5	1/1	2/3	1/3	0/1	1/8	3/11	0/1	1/6
0/1																																							
0/1	0/1																																						
1/4	1/1	2/2																																					
1/3	0/1	1/8																																					
3/9		1/4																																					
		0/1																																					
0/1		0/2																																					
1/5	1/1	2/3																																					
1/3	0/1	1/8																																					
3/11	0/1	1/6																																					

### Shots by position



### Shooting statistics

Position	Goals	Sav.	Miss.	Post	Blk.	Total	%
Back (9m)	6	6	4	2	2	20	30
Line (6m)	2	3	0	0	0	5	40
Wing	3	1	1	0	0	5	60
7m penalties	5	1	0	0	0	6	83
Fastbreak	3	0	0	0	0	3	100
Breakthrough	4	0	0	0	0	4	100
<b>Total</b>	<b>23</b>	<b>11</b>	<b>5</b>	<b>2</b>	<b>2</b>	<b>43</b>	<b>53</b>

7m penalties 5/6  
Fastbreak 3/3  
Breakthrough 4/4  
Long dist. 0/0

7m penalties 6/6  
Fastbreak 0/0  
Breakthrough 3/7  
Long dist. 1/1

# Jersey number    Tot. Total shooting    6m 6m (line) shooting    9m 9m shooting    Wng. Wing shooting    FB Fastbreak sh.    7m 7m penalty sh.  
Brk. Breakthrough sh.    LD Long distance sh.    As. Assists    E7 Earned 7m pen.    TF Technical Faults    St. Steals    2m 2m punishments  
C7. Committed 7m    E2 Earned 2m pun.    YC. Yellow cards    RC Red cards    BC Blue cards    Blk. Blocks    S Starting Line-up





# IHF Women's Youth (U18) World Championship

Poland (Kielce)

Semifinal



Match Team Statistics

Match No. 88

**Sweden 23 - 29 Russia**

(13 - 17) (10 - 12)

18.8.2018. 20:00

Attendance: 500

Hall Legionow

Referees: Bartosz Leszczynski (POL) / Marcin Piechota (POL)

## Shot distribution by player

**3 M. Cherniaeva**

		0/1

1 miss.

**23 E. Mikhaylichenko**

1/1		0/1
0/1		1/1

1 miss.

**35 A. Sheina**

2/3		

1 miss.

**40 A. Sinelnikova**

		1/1

1 miss. 0/1 lob

**49 S. Krakhmaleva**


**53 V. Turusina**


1 miss.

**56 E. Skivko**


1 miss.

**61 V. Maslova**

0/1		
1/1		0/1

**68 E. Sidnina**

	0/1	

**74 V. Kirdiasheva**

2/2		1/1
		4/5
4/5		3/3

2 post 1 miss. 3 block

**79 E. Levchina**

		2/2
		1/1

1 miss. 0/1 lob

**84 K. Mukhina**

0/1		

**90 E. Smirnova**

1/1		
3/3	1/1	

**TOTAL**

4/5	0/1	1/3
2/3		7/8
8/11	1/1	5/6

2 post 7 miss. 3 block 0/1 lob

## Saves distribution goalkeepers

**16 N. Kolesnikova**

		1/3
0/2	2/2	4/4
1/5	0/1	0/4

**30 A. Vereshchak**

0/2		0/1
1/1		1/2
	0/2	1/3

**91 E. Karabutova**

0/1		

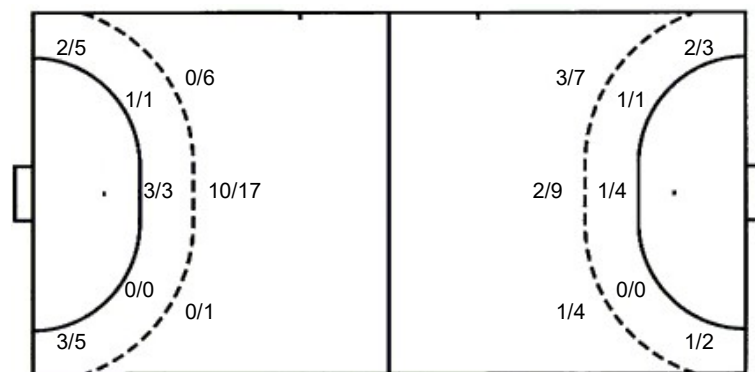
**TOTAL**

0/2		1/4
1/4	2/2	5/6
1/5	0/3	1/7

## Shots by position

ATTACK

DEFENSE



7m penalties 6/6

Fastbreak 0/0

Breakthrough 3/7

Long dist. 1/1

7m penalties 5/6

Fastbreak 3/3

Breakthrough 4/4

Long dist. 0/0

## Shooting statistics

Position	Goals	Sav.	Miss.	Post	Blk.	Total	%
Back (9m)	10	6	3	2	3	24	42
Line (6m)	4	0	0	0	0	4	100
Wing	5	3	2	0	0	10	50
7m penalties	6	0	0	0	0	6	100
Fastbreak	0	0	0	0	0	0	0
Breakthrough	3	2	2	0	0	7	43
<b>Total</b>	<b>28</b>	<b>11</b>	<b>7</b>	<b>2</b>	<b>3</b>	<b>51</b>	<b>55</b>

# Jersey number Tot. Total shooting 6m 6m (line) shooting 9m 9m shooting Wng. Wing shooting FB Fastbreak sh. 7m 7m penalty sh.  
 Brk. Breakthrough sh. LD Long distance sh. As. Assists E7 Earned 7m pen. TF Technical Faults St. Steals 2m 2m punishments  
 C7. Committed 7m E2 Earned 2m pun. YC. Yellow cards RC Red cards BC Blue cards Blk. Blocks S Starting Line-up