



IHF Women's Youth (U18) World Championship

Poland (Kielce)

Quarterfinal



Match Team Statistics

Germany 29 - 30 Korea

16.8.2018. 20:45

Match No. 82

(13 - 15) (16 - 15)

Attendance:

Hall Legionow

Referees: Viktoriia Alpaidze (RUS) / Tatiana Berezkina (RUS)

Germany

#	Surname and name	S	Goals / shots									Attack				Def.			Penalties			TP		
			Tot.	%	9m	6m	Wing	7m	FB	Brk.	LD	As.	E7	E2	TF	St.	C7	Blk	YC	2m	RC		BC	
1	ZENNER Charley	S																						27:43
2	UHLMANN Pauline	S	3/3	100		1/1	2/2									1	1		4					60:00
3	HAUSHERR Lena	S	1/2	50			0/1			1/1								1						42:37
6	KOCKEL Leonie		5/5	100	1/1										1		3							17:27
7	WEISE Julia																							
9	ANDREAS Tamara																							0:28
10	MÜHLNER Maxi	S	2/3	67		2/3								1		1	1		1	1		3		58:13
11	QUIST Laetitia	S	5/7	71	0/1										1	1	1	1	1	1	1			36:11
12	WALDENMAIER Laura																							32:17
14	VON PEREIRA Aimée	S	7/8	88	1/1			5/5		0/1	1/1					1			1					31:59
15	AGWUNEDU Ndidi		2/3	67		1/1	1/2							1			1							16:57
17	WULF Mariel																							
18	NEUBRANDER Lea	S	2/3	67		0/1									1		1		1		1			50:05
19	GOLLA Paulina																							3:03
24	MICHALCZIK Marie																1							10:39
66	BLECKMANN Dana		2/5	40	0/2									1	2	1	3	1						32:21
	Team / bench																							
	UKUPNO		29/39	74	2/5	4/6	3/5	5/5	1/1	12/14	2/3			3	5	4	13	2	7	3	2	3	0	0

#	Surname and name	Saves / shots								
		Tot.	%	9m	6m	Wing	7m	FB	Brk.	LD
1	ZENNER Charley	2/21	10	1/5	0/3	1/6	0/4	0/1	0/2	
12	WALDENMAIER Laura	1/12	8	0/1	0/2	0/3	0/2	0/2	1/3	
	TOTAL	3/33	9	1/6	0/4	1/8	0/7	0/3	1/5	0/0

Coach: Maik Nowak

Number of attacks: 50, Efficiency: 58%, Average Duration: 38,9 seconds

Attack by type of defense

	Shots	9m	6m	Wing	TF	E7	E2
On def. 6-0	1/2	0/0	0/0	0/1	3	0	0
On def. 3-3	20/28	2/5	4/6	3/4	10	5	4
Fastbreak	1/1				0	0	0

Defense by type

	Total	9m	6m	Wing	Stl.	C7	2m
Def. 6-0	18/29	4/11	3/3	7/9	0	6	3
Def. 3-3	2/2	1/1	1/1	0/0	2	1	0
Fastbreak	3/4				0	0	0

Attack with goalkeeper out

	Attack				Reaction		
	Att.	Eff.	Shots	TF	FB	LD	Tot.
GK in	50	58%	29/39	13	3/4	0/0	3/4

GK out attack is counted if one part or whole attack was GK out

Defense with opponent goalkeeper out

	Attack				Reaction		
	Att.	Eff.	Shots	TF	FB	LD	Tot.
GK in	41	63%	26/36	6	1/1	2/3	3/4

Attack with player superiority/minority

	Attack				Reaction		
	Att.	Eff.	Shots	TF	FB	LD	Tot.
Superiority +2	2	100%	2/2	0	0/0	0/0	0/0
Superiority +1	5	40%	2/3	2	0/0	0/0	0/0
Normal	32	59%	19/24	7	1/2	0/0	1/2
Minority -1	6	67%	4/6	2	1/1	0/0	1/1

Player superiority counted at the end of attack (in case it changes during attack)

Defense with player superiority/minority

	Attack				Reaction		
	Att.	Eff.	Shots	TF	FB	LD	Tot.
Minority -1	7	86%	6/7	0	0/0	0/0	0/0
Normal	33	48%	16/24	7	1/1	2/2	3/3
Superiority +1	3	67%	2/3	1	0/0	0/1	0/1
Superiority +2	1	0%	0/2	0	0/0	0/0	0/0

Jersey number Tot. Total shooting 6m 6m (line) shooting 9m 9m shooting Wng Wing shooting FB Fastbreak sh. 7m 7m penalty sh.
 Brk. Breakthrough sh. LD Long distance sh. As. Assists E7 Earned 7m pen. TF Technical Faults St. Steals 2m 2m punishments
 C7. Committed 7m E2 Earned 2m pun. YC. Yellow cards RC Red cards BC Blue cards Blk. Blocks S Starting Line-up



IHF Women's Youth (U18) World Championship

Poland (Kielce)

Quarterfinal



Match Team Statistics

Match No. 82

Germany 29 - 30 Korea

(13 - 15) (16 - 15)

16.8.2018. 20:45

Attendance:

Hall Legionow

Referees: Viktoriia Alpaidze (RUS) / Tatiana Berezkina (RUS)

Shot distribution by player

2 P. Uhlmann

2/2		1/1

3 L. Hausherr

		1/1
	0/1	

6 L. Kockel

2/2	1/1	
1/1		
1/1		

7 J. Weise

9 T. Andreas

10 M. Mühler

0/1		
2/2		

11 L. Quist

		1/1
	1/2	1/1
2/2		

1 miss.

14 A. Von Pereira

	1/1	1/1
1/2		4/4

15 N. Agwunedu

2/2	0/1	

17 M. Wulf

18 L. Neubrander

		1/1
	0/1	1/1

19 P. Golla

24 M. Michalczyk

66 D. Bleckmann

0/1		
	1/1	1/1

1 miss. 1 block

TOTAL

4/5	1/1	2/2
1/2	2/3	4/4
8/9	1/4	6/6

2 miss. 1 block

Saves distribution goalkeepers

1 C. Zenner

0/2		0/1
		0/3
1/8	1/1	0/2

12 L. Waldenmaier

0/2		0/1
0/4		0/3

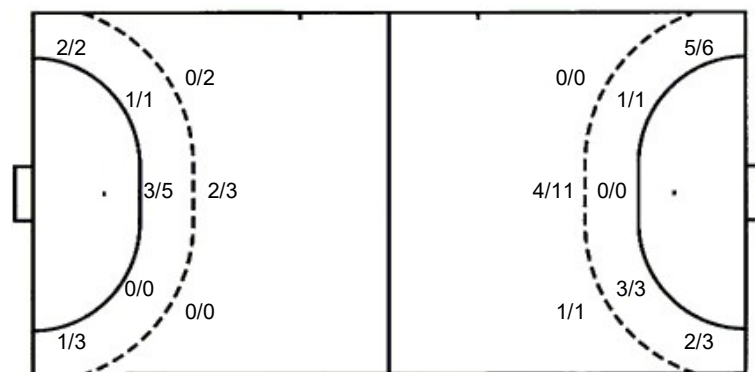
TOTAL

0/4		0/2
		0/3
1/12	1/1	0/5

Shots by position

ATTACK

DEFENSE



7m penalties 5/5

Fastbreak 1/1

Breakthrough 12/14

Long dist. 2/3

7m penalties 7/7

Fastbreak 3/4

Breakthrough 4/6

Long dist. 0/0

Shooting statistics

Position	Goals	Sav.	Miss.	Post	Bik.	Total	%
Back (9m)	2	1	1	0	1	5	40
Line (6m)	4	2	0	0	0	6	67
Wing	3	2	0	0	0	5	60
7m penalties	5	0	0	0	0	5	100
Fastbreak	1	0	0	0	0	1	100
Breakthrough	12	2	0	0	0	14	86
Total	27	7	1	0	1	36	75

Jersey number Tot. Total shooting 6m 6m (line) shooting 9m 9m shooting Wng. Wing shooting FB Fastbreak sh. 7m 7m penalty sh.
 Brk. Breakthrough sh. LD Long distance sh. As. Assists E7 Earned 7m pen. TF Technical Faults St. Steals 2m 2m punishments
 C7. Committed 7m E2 Earned 2m pun. YC. Yellow cards RC Red cards BC Blue cards Blk. Blocks S Starting Line-up



IHF Women's Youth (U18) World Championship

Poland (Kielce)

Quarterfinal



Match Team Statistics

Match No. 82

Germany 29 - 30 Korea

(13 - 15) (16 - 15)

16.8.2018. 20:45

Attendance:

Hall Legionow

Referees: Viktoriia Alpaidze (RUS) / Tatiana Berezkina (RUS)

Shot distribution by player

9 G. Choi

11 Y. Jeong

13 H. Jeong

17 S. Park

19 M. Son

		1/1

1 miss. 1 block

20 E. Jo

21 D. Lee

1/1 lob

22 S. Kim

		1/1

1 post 1/1 lob

23 Y. Oh

1/1		
1/1	0/1	

1 post 1 miss. 1 block

24 J. Kim

26 H. Kim

27 S. Park

3/3		1/1

1 post 1/1 lob

29 Y. Yun

		2/2
3/4		2/2

2/3 lob

31 B. Woo

3/3		2/2
		1/1
4/4		

1 miss. 1 block

TOTAL

4/4		2/2
		3/3
11/12	0/1	5/5

3 post 3 miss. 3 block 5/6 lob

Saves distribution goalkeepers

1 D. Yeo

1/5	0/1	0/2
1/2	1/3	0/4
1/8	3/4	0/3

12 M. Lee

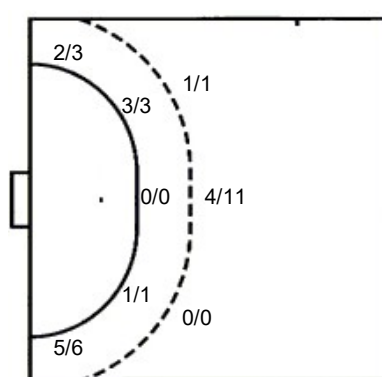
0/1		0/3

TOTAL

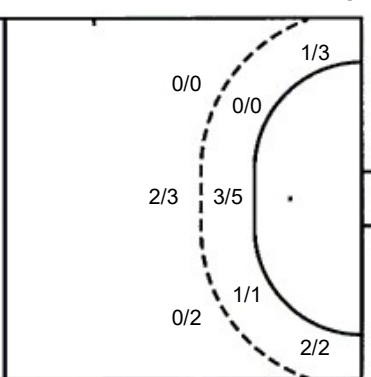
1/5	0/1	0/2
1/2	1/3	0/4
1/9	3/4	0/6

Shots by position

ATTACK



DEFENSE



7m penalties 7/7
Fastbreak 3/4
Breakthrough 4/6
Long dist. 0/0

7m penalties 5/5
Fastbreak 1/1
Breakthrough 12/14
Long dist. 2/3

Shooting statistics

Position	Goals	Sav.	Miss.	Post	Blk.	Total	%
Back (9m)	5	1	2	1	3	12	42
Line (6m)	4	0	0	0	0	4	100
Wing	7	1	0	1	0	9	78
7m penalties	7	0	0	0	0	7	100
Fastbreak	3	0	0	1	0	4	75
Breakthrough	4	1	1	0	0	6	67
Total	30	3	3	3	3	42	71

Jersey number Tot. Total shooting 6m 6m (line) shooting 9m 9m shooting Wng. Wing shooting FB Fastbreak sh. 7m 7m penalty sh.
Brk. Breakthrough sh. LD Long distance sh. As. Assists E7 Earned 7m pen. TF Technical Faults St. Steals 2m 2m punishments
C7. Committed 7m E2 Earned 2m pun. YC. Yellow cards RC Red cards BC Blue cards Blk. Blocks S Starting Line-up