



IHF Women's Youth (U18) World Championship

Poland (Kielce)

Eighth final



Match Team Statistics

Match No. 68

Korea 36 - 30 Japan

(20 - 15) (16 - 15)

15.8.2018. 18:30

Attendance: 100

Hall Politechnika

Referees: Raymel Reyes (CUB) / Alexys Zuniga (CUB)

Korea

#	Surname and name	S	Goals / shots								Attack				Def.			Penalties			TP		
			Tot.	%	9m	6m	Wing	7m	FB	Brk.	LD	As.	E7	E2	TF	St.	C7	Bik	YC	2m		RC	BC
1	YEO Dahee	S	0/1	0																			47:20
9	CHOI Gyeongbin																						
11	JEONG Yuhee		0/1	0	0/1																		3:21
12	LEE Minji																						7:35
13	JEONG Hyunhui																						
17	PARK Soojeong																						
19	SON Minkyong		0/1	0						0/1				1		4	2						46:09
20	JO Eunbeen		1/1	100						1/1						1							9:01
21	LEE Daeun	S	2/3	67	1/1	1/1					0/1		1	1									17:38
22	KIM Sumin	S	6/11	55	0/1	0/1	5/7			1/1	0/1		1			1							60:00
23	OH Yedam	S	6/12	50	1/2					2/3	2/5	1/2	2		2	3				1			50:16
24	KIM Jihyun		1/1	100	1/1									1									39:31
26	KIM Hagyeong																						5:01
27	PARK Soyoun	S	10/13	77	2/2	1/2				3/3	1/1	3/5	3	1	1	1	1	1		1	2		60:00
29	YUN Yejin	S	5/10	50			2/4			0/1	2/4	1/1		2	2	2							48:49
31	WOO Bitna	S	5/9	56	1/4					4/5				1		2							24:45
	Team / bench																						
	UKUPNO		36/63	57	6/12	2/4	7/11	4/5	7/9	5/13	5/9		9	5	0	12	9	1	0	1	3	0	0

#	Surname and name	Saves / shots								
		Tot.	%	9m	6m	Wing	7m	FB	Brk.	LD
1	YEO Dahee	5/27	19	2/9	1/3	0/3		0/2	2/10	
12	LEE Minji	1/7	14			1/3	0/1	0/3		
	TOTAL	6/34	18	2/9	1/3	1/6	0/1	0/5	2/10	0/0

Coach: **Seong Ok Oh**

Number of attacks: 74, Efficiency: 49%, Average Duration: 22,3 seconds

Attack by type of defense

	Shots	9m	6m	Wing	TF	E7	E2
On def. 6-0	5/15	0/2	0/1	1/4	3	3	0
On def. 5-1	1/2	0/0	0/1	1/1	0	0	0
On def. 3-3	14/23	6/10	2/2	5/6	9	2	0
Fastbreak	7/9				0	0	0

Defense by type

	Total	9m	6m	Wing	Stl.	C7	2m
Def. 6-0	3/4	0/0	1/1	1/2	3	0	0
Def. 5-1	17/31	7/10	1/3	3/9	1	1	2
Def. 3-3	2/2	0/0	0/0	1/1	5	0	1
Fastbreak	5/5				0	0	0

Attack with goalkeeper out

	Attack				Reaction		
	Att.	Eff.	Shots	TF	FB	LD	Tot.
GK out (7 on 6)	2	150%	3/4	0	0/0	0/0	0/0
GK out pl. minority	2	50%	1/1	1	0/0	0/1	0/1
GK in	70	46%	32/58	11	5/5	2/3	7/8

GK out attack is counted if one part or whole attack was GK out

Defense with opponent goalkeeper out

	Attack				Reaction		
	Att.	Eff.	Shots	TF	FB	LD	Tot.
GK out (7 on 6)	16	25%	4/7	10	0/0	3/5	3/5
GK out pl. super.	0	0%	0/0	0	0/0	0/0	0/0
GK in	58	45%	26/40	19	7/9	2/4	9/13

Attack with player superiority/minority

	Attack				Reaction		
	Att.	Eff.	Shots	TF	FB	LD	Tot.
Superiority +1	7	43%	3/5	1	1/1	0/0	1/1
Normal	30	43%	13/25	6	3/3	1/2	4/5
Minority -1	8	38%	3/7	1	0/0	1/2	1/2

Player superiority counted at the end of attack (in case it changes during attack)

Defense with player superiority/minority

	Attack				Reaction		
	Att.	Eff.	Shots	TF	FB	LD	Tot.
Minority -1	8	63%	5/6	2	0/0	0/0	0/0
Normal	30	43%	13/18	11	5/7	2/2	7/9
Superiority +1	7	57%	4/5	2	1/1	0/0	1/1

Jersey number
 Brk. Breakthrough sh.
 C7. Committed 7m
 LD Long distance sh.
 E2 Earned 2m pun.
 6m 6m (line) shooting
 As. Assists
 YC. Yellow cards
 9m 9m shooting
 E7 Earned 7m pen.
 RC Red cards
 Wng. Wing shooting
 TF Technical Faults
 BC Blue cards
 FB Fastbreak sh.
 St. Steals
 Blk. Blocks
 7m 7m penalty sh.
 2m 2m punishments
 S Starting Line-up



IHF Women's Youth (U18) World Championship

Poland (Kielce)

Eighth final



Match Team Statistics

Match No. 68

Korea 36 - 30 Japan

(20 - 15) (16 - 15)

15.8.2018. 18:30

Attendance: 100

Hall Politechnika

Referees: Raymel Reyes (CUB) / Alexys Zuniga (CUB)

Shot distribution by player

9 G. Choi

11 Y. Jeong

	0/1	

13 H. Jeong

17 S. Park

19 M. Son

1 post

20 E. Jo

		1/1

21 D. Lee

	2/2	

1 miss.

22 S. Kim

	1/1	
1/4		2/4
1/1		

1/1 lob

23 Y. Oh

	1/1	1/1
0/1	2/2	0/1
1/1		1/1

1 post 3 miss.

24 J. Kim

	1/1	

26 H. Kim

27 S. Park

	0/1	2/2
	2/2	
2/2	2/2	1/1

1 block 1/2 lob

29 Y. Yun

		1/1
		1/1
2/5		

1 post 1 miss. 1/1 lob

31 B. Woo

	2/2	1/2
	0/2	2/2

1 post

TOTAL

5/5	3/5	5/5
1/7	4/5	5/8
6/9	2/2	2/2

4 post 5 miss. 1 block 3/4 lob

Saves distribution goalkeepers

1 D. Yeo

1/3	0/3	0/1
2/7	1/2	0/1
1/4	0/3	0/4

12 M. Lee

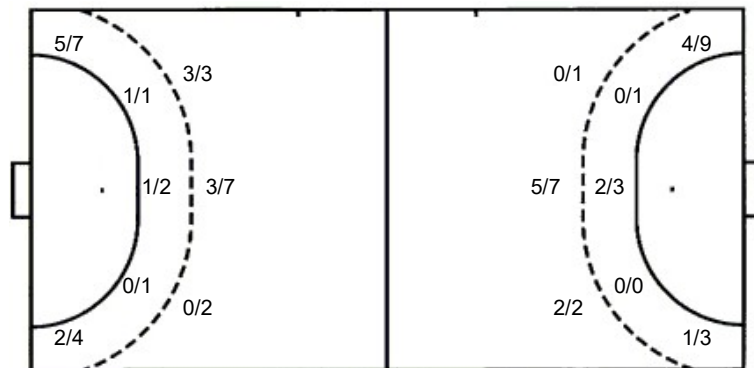
1/2		
0/1		0/1
0/1	0/1	0/1

TOTAL

2/5	0/3	0/1
2/8	1/2	0/2
1/5	0/4	0/5

Shots by position

ATTACK



7m penalties 4/5
Fastbreak 7/9
Breakthrough 5/13
Long dist. 5/9

DEFENSE

7m penalties 1/1
Fastbreak 5/5
Breakthrough 8/11
Long dist. 2/4

Shooting statistics

Position	Goals	Sav.	Miss.	Post	Blk.	Total	%
Back (9m)	6	4	1	1	0	12	50
Line (6m)	2	2	0	0	0	4	50
Wing	7	4	0	0	0	11	64
7m penalties	4	1	0	0	0	5	80
Fastbreak	7	0	1	1	0	9	78
Breakthrough	5	4	2	2	0	13	38
Total	31	15	4	4	0	54	57



IHF Women's Youth (U18) World Championship

Poland (Kielce)

Eighth final



Match Team Statistics

Match No. 68

Korea 36 - 30 Japan

(20 - 15) (16 - 15)

15.8.2018. 18:30

Attendance: 100

Hall Politechnika

Referees: Raymel Reyes (CUB) / Alexys Zuniga (CUB)

Japan

Igraer		Goals / shots										Attack				Def.			Penalties			TP	
#	Surname and name	S	Tot.	%	9m	6m	Wing	7m	FB	Brk.	LD	As.	E7	E2	TF	St.	C7	Bik	YC	2m	RC		BC
2	HASHIGUCHI Wakana											1											
4	TSUJINO Momoka		1/1	100						1/1					1								3:19
5	ABE Miyuki	S	7/10	70	4/4					3/5	0/1				3		1	1					58:39
6	ITO Airi	S	5/6	83	3/3			1/1		1/2		1			3								30:40
7	HATTORI Sayaka																1						2:13
9	YASUDA Tsugumi																						
10	OKADA Ayame	S	5/8	63	0/2	0/1			3/3	1/1	1/1	1	1	1	6	1							39:46
12	SAKAKI Mana	S										1			4								24:41
14	HIRANO Shuka	S	1/3	33			1/3								5	2	1		1				43:47
15	TANIFUJI Haruka		5/8	63			3/6		2/2						1	1							35:39
16	KAKIZOE Madoka																				1		9:05
17	KUREBAYASHI Shino		4/4	100		2/2				1/1	1/1			2	1	1	1						40:42
18	EMOTO Hikaru																						
19	UJIMURA Yui																						16:13
20	MORIYA Aoi	S	1/3	33			1/3					1			1		1			1			43:49
21	UEDA Haruka	S	1/4	25	0/1	0/1				1/1	0/1				4	1							57:47
	Team / bench																						
	UKUPNO		30/47	64	7/10	2/4	5/12	1/1	5/5	8/11	2/4	5	1	3	29	6	5	1	2	1	0	0	

Goalkeepers		Saves / shots									
#	Surname and name	Tot.	%	9m	6m	Wing	7m	FB	Brk.	LD	
12	SAKAKI Mana	12/34	35	4/6	2/4	3/10	0/1	0/6	3/7		
16	KAKIZOE Madoka	4/12	33	0/4		1/1	1/4		1/2	1/1	
	TOTAL	16/46	35	4/10	2/4	4/11	1/5	0/6	4/9	1/1	

Coach: Jun Tanaka

Number of attacks: 74, Efficiency: 41%, Average Duration: 26,3 seconds

Attack by type of defense

	Shots	9m	6m	Wing	TF	E7	E2
On def. 6-0	3/4	0/0	1/1	1/2	0	0	0
On def. 5-1	17/31	7/10	1/3	3/9	27	1	2
On def. 3-3	2/2	0/0	0/0	1/1	2	0	1
Fastbreak	5/5				0	0	0

Defense by type

	Total	9m	6m	Wing	Stl.	C7	2m
Def. 6-0	5/15	0/2	0/1	1/4	2	3	0
Def. 5-1	1/2	0/0	0/1	1/1	4	0	0
Def. 3-3	14/23	6/10	2/2	5/6	0	2	1
Fastbreak	7/9				0	0	0

Attack with goalkeeper out

	Attack				Reaction		
	Att.	Eff.	Shots	TF	FB	LD	Tot.
GK out (7 on 6)	16	25%	4/7	10	0/0	3/5	3/5
GK in	58	45%	26/40	19	7/9	2/4	9/13

GK out attack is counted if one part or whole attack was GK out

Defense with opponent goalkeeper out

	Attack				Reaction		
	Att.	Eff.	Shots	TF	FB	LD	Tot.
GK out (7 on 6)	2	150%	3/4	0	0/0	0/0	0/0
GK in	70	46%	32/58	11	5/5	2/3	7/8

Attack with player superiority/minority

	Attack				Reaction		
	Att.	Eff.	Shots	TF	FB	LD	Tot.
Superiority +1	8	63%	5/6	2	0/0	0/0	0/0
Normal	30	43%	13/18	11	5/7	2/2	7/9
Minority -1	7	57%	4/5	2	1/1	0/0	1/1

Player superiority counted at the end of attack (in case it changes during attack)

Defense with player superiority/minority

	Attack				Reaction		
	Att.	Eff.	Shots	TF	FB	LD	Tot.
Minority -1	7	43%	3/5	1	1/1	0/0	1/1
Normal	30	43%	13/25	6	3/3	1/2	4/5
Superiority +1	8	38%	3/7	1	0/0	1/2	1/2

Jersey number Tot. Total shooting 6m 6m (line) shooting 9m 9m shooting Wng. Wing shooting FB Fastbreak sh. 7m 7m penalty sh.
 Brk. Breakthrough sh. LD Long distance sh. As. Assists E7 Earned 7m pen. TF Technical Faults St. Steals 2m 2m punishments
 C7. Committed 7m E2 Earned 2m pun. YC. Yellow cards RC Red cards BC Blue cards Blk. Blocks S Starting Line-up



IHF Women's Youth (U18) World Championship

Poland (Kielce)

Eighth final



Match Team Statistics

Match No. 68

Korea 36 - 30 Japan

(20 - 15) (16 - 15)

15.8.2018. 18:30

Attendance: 100

Hall Politechnika

Referees: Raymel Reyes (CUB) / Alexys Zuniga (CUB)

Shot distribution by player

2 W. Hashiguchi

4 M. Tsujino

		1/1

5 M. Abe

2/3	1/1	
1/1	0/1	1/1
1/1	1/1	

1 miss.

6 A. Ito

3/3		2/2

1 post

7 S. Hattori

9 T. Yasuda

10 A. Okada

1/1		
	1/1	1/1
0/1	1/1	1/1

1 post 1 miss.

14 S. Hirano

0/1		
	1/1	

1 miss.

15 H. Tanifuji

3/3		
		2/2

2 post 1 miss.

17 S. Kurebayashi

2/2		
	1/1	

1/1 lob

18 H. Emoto

19 Y. Ujimura

20 A. Moriya

	1/1	

2 miss.

21 H. Ueda

	1/1	
0/2		

1 miss.

TOTAL

3/5	3/3	1/1
6/8	1/2	2/2
4/5	4/4	5/5

4 post 7 miss. 1/1 lob

Saves distribution goalkeepers

12 M. Sakaki

0/3	2/4	0/2
4/5	1/4	2/5
3/9	0/1	0/2

16 M. Kakizoe

0/2	0/1	0/3
2/2	0/1	1/3
	0/1	

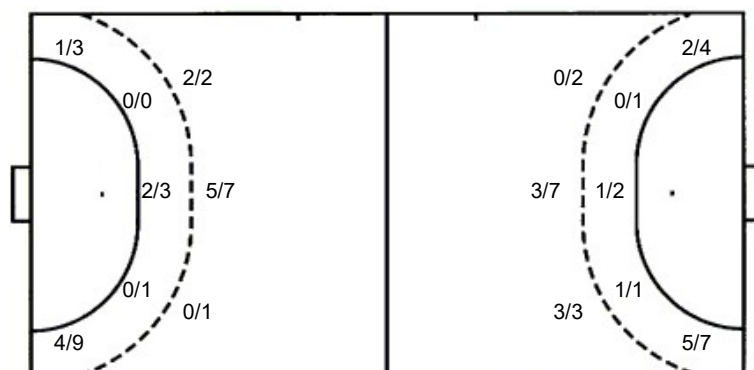
TOTAL

0/5	2/5	0/5
6/7	1/5	3/8
3/9	0/2	0/2

Shots by position

ATTACK

DEFENSE



7m penalties 1/1
Fastbreak 5/5
Breakthrough 8/11
Long dist. 2/4

7m penalties 4/5
Fastbreak 7/9
Breakthrough 5/13
Long dist. 5/9

Shooting statistics

Position	Goals	Sav.	Miss.	Post	Blk.	Total	%
Back (9m)	7	2	1	0	0	10	70
Line (6m)	2	1	0	1	0	4	50
Wing	5	1	4	2	0	12	42
7m penalties	1	0	0	0	0	1	100
Fastbreak	5	0	0	0	0	5	100
Breakthrough	8	2	0	1	0	11	73
Total	28	6	5	4	0	43	65