



# IHF Women's Youth (U18) World Championship

## Poland (Kielce)

### Preliminary Round - Group C



Match Team Statistics

Match No. 46

## Russia 30 - 27 Netherlands

(16 - 12) (14 - 15)

12.8.2018. 16:00

Attendance: 150

Hall Politechnika

Referees: Alexei Covalciuc (MDA) / Igor Covalciuc (MDA)

### Russia

#	Surname and name	S	Goals / shots								Attack				Def.			Penalties			TP		
			Tot.	%	9m	6m	Wing	7m	FB	Brk.	LD	As.	E7	E2	TF	St.	C7	Bk	YC	2m		RC	BC
3	CHERNIAEVA Mariia	S	0/2	0		0/1	0/1																22:37
16	KOLESNIKOVA Nadezda	S											1										38:43
23	MIKHAYLICHENKO Elena	S	7/10	70	4/6	1/1				1/2	1/1		2	1	1	2		1	1				49:34
30	VERESHCHAK Anna												2										21:17
35	SHEINA Anna		1/1	100		1/1							1	1									37:23
40	SINELNIKOVA Alina	S	4/4	100		2/2				2/2				1		2		1	1	1	2		54:47
49	KRAKHMALOVA Sofia															2							15:56
53	TURUSINA Viktoriia		1/3	33	1/2					0/1													21:01
56	SKIVKO Ekaterina		4/6	67	1/2	2/2				0/1	1/1		1	1		4		2			1		26:31
61	MASLOVA Valeriia	S	9/14	64	5/9				3/3		1/1	0/1	1			2			1				45:08
68	SIDNINA Elina		0/1	0	0/1											1							3:44
74	KIRDIASHEVA Valeriia	S	0/3	0	0/2				0/1				1										4:36
79	LEVCHINA Ekaterina	S	1/1	100						1/1					1	2							48:27
84	MUKHINA Kristina		1/3	33	0/1					1/1	0/1			1		1		1	1	1			19:35
90	SMIRNOVA Elena		2/4	50	0/1	0/1			2/2						1								10:41
91	KARABUTOVA Ekaterina																						
	Team / bench																						
	UKUPNO		30/52	58	11/24	6/8	0/1	5/6	5/7	3/5	0/1		8	5	1	15	5	5	3	2	4	0	0

#	Surname and name	Saves / shots								
		Tot.	%	9m	6m	Wing	7m	FB	Brk.	LD
16	KOLESNIKOVA Nadezda	9/23	39	2/6	1/4	2/5	0/1	4/6	0/1	
30	VERESHCHAK Anna	5/18	28	3/6	1/1	1/3	0/3	0/3	0/2	
91	KARABUTOVA Ekaterina									
	TOTAL	14/41	34	5/12	2/5	3/8	0/4	4/9	0/3	0/0

Coach: Liubov Sidoricheva

Number of attacks: 57, Efficiency: 53%, Average Duration: 34,0 seconds

### Attack by type of defense

	Shots	9m	6m	Wing	TF	E7	E2
On def. 6-0	20/38	11/24	6/8	0/1	15	5	1
Fastbreak	5/7				0	0	0

### Defense by type

	Total	9m	6m	Wing	Stl.	C7	2m
Def. 6-0	18/36	7/19	3/5	5/9	5	5	4
Fastbreak	5/10				0	0	0

### Attack with goalkeeper out

	Attack				Reaction		
	Att.	Eff.	Shots	TF	FB	LD	Tot.
GK in	57	53%	30/52	15	5/10	0/0	5/10

GK out attack is counted if one part or whole attack was GK out

### Defense with opponent goalkeeper out

	Attack				Reaction		
	Att.	Eff.	Shots	TF	FB	LD	Tot.
GK in	56	48%	27/50	15	5/7	0/1	5/8

### Attack with player superiority/minority

	Attack				Reaction		
	Att.	Eff.	Shots	TF	FB	LD	Tot.
Superiority +1	3	0%	0/3	2	0/1	0/0	0/1
Normal	32	59%	19/27	10	5/7	0/0	5/7
Minority -1	8	63%	5/7	0	0/0	0/0	0/0

Player superiority counted at the end of attack (in case it changes during attack)

### Defense with player superiority/minority

	Attack				Reaction		
	Att.	Eff.	Shots	TF	FB	LD	Tot.
Minority -1	7	57%	4/5	2	1/1	0/0	1/1
Normal	32	59%	19/34	5	4/5	0/1	4/6
Superiority +1	3	33%	1/2	1	0/0	0/0	0/0

# Jersey number Tot. Total shooting 6m 6m (line) shooting 9m 9m shooting Wng. Wing shooting FB Fastbreak sh. 7m 7m penalty sh.  
 Brk. Breakthrough sh. LD Long distance sh. As. Assists E7 Earned 7m pen. TF Technical Faults St. Steals 2m 2m punishments  
 C7. Committed 7m E2 Earned 2m pun. YC. Yellow cards RC Red cards BC Blue cards Blk. Blocks S Starting Line-up



# IHF Women's Youth (U18) World Championship

Poland (Kielce)

Preliminary Round - Group C



Match Team Statistics

Match No. 46

**Russia 30 - 27 Netherlands**

(16 - 12) (14 - 15)

12.8.2018. 16:00

Attendance: 150

Hall Politechnika

Referees: Alexei Covalciuc (MDA) / Igor Covalciuc (MDA)

## Shot distribution by player

**3 M. Cherniaeva**

	0/1	
1 post		

1 post

**23 E. Mikhaylichenko**

		1/1
1/2		
2/2	1/1	2/2

1 post 1 block

**35 A. Sheina**


1/1 lob

**40 A. Sinelnikova**

		1/1
3/3		

3/3

**49 S. Krakhmaleva**


1/1 lob

**53 V. Turusina**

	0/1	1/1
		0/1

0/1

**56 E. Skivko**

2/2		2/2

1 post 1 miss.

**61 V. Maslova**

	0/1	
1/1		2/3
4/4	1/2	1/1

1 miss. 1 block

**68 E. Sidnina**


1 block

**74 V. Kirdiasheva**

		0/1
0/1		

1 miss.

**79 E. Levchina**

		1/1

1/1

**84 K. Mukhina**

		1/1
		0/1

1 miss.

**90 E. Smirnova**

1/1		
		1/2

1 post

**TOTAL**

	0/1	1/1
3/4	0/2	5/7
11/12	2/3	7/10

4 post 4 miss. 3 block 1/1 lob

## Saves distribution goalkeepers

**16 N. Kolesnikova**

1/1		0/3
6/6	0/1	1/4
1/4	0/1	0/3

**30 A. Vereshchak**

	0/1	0/1
1/3		3/4
0/4	0/1	1/4

**91 E. Karabutova**

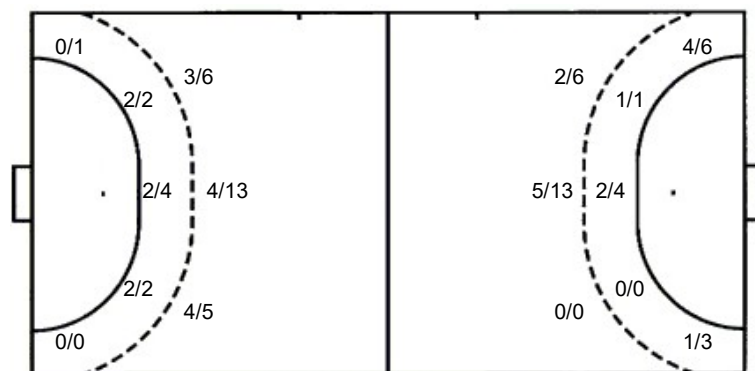

**TOTAL**

1/1	0/1	0/4
7/9	0/1	4/8
1/8	0/2	1/7

## Shots by position

ATTACK

DEFENSE



## Shooting statistics

Position	Goals	Sav.	Miss.	Post	Blk.	Total	%
Back (9m)	11	6	3	1	3	24	46
Line (6m)	6	2	0	0	0	8	75
Wing	0	0	0	1	0	1	0
7m penalties	5	1	0	0	0	6	83
Fastbreak	5	0	0	2	0	7	71
Breakthrough	3	1	1	0	0	5	60
<b>Total</b>	<b>30</b>	<b>10</b>	<b>4</b>	<b>4</b>	<b>3</b>	<b>51</b>	<b>59</b>

7m penalties 5/6  
Fastbreak 5/7  
Breakthrough 3/5  
Long dist. 0/1

7m penalties 4/4  
Fastbreak 5/10  
Breakthrough 3/3  
Long dist. 0/0

# Jersey number Tot. Total shooting 6m 6m (line) shooting 9m 9m shooting Wng. Wing shooting FB Fastbreak sh. 7m 7m penalty sh.  
Brk. Breakthrough sh. LD Long distance sh. As. Assists E7 Earned 7m pen. TF Technical Faults St. Steals 2m 2m punishments  
C7. Committed 7m E2 Earned 2m pun. YC. Yellow cards RC Red cards BC Blue cards Blk. Blocks S Starting Line-up



# IHF Women's Youth (U18) World Championship

Poland (Kielce)

Preliminary Round - Group C



Match Team Statistics

Match No. 46

**Russia 30 - 27 Netherlands**

(16 - 12) (14 - 15)

12.8.2018. 16:00

Attendance: 150

Hall Politechnika

Referees: Alexei Covalciuc (MDA) / Igor Covalciuc (MDA)

## Netherlands

#	Surname and name	S	Goals / shots								Attack			Def.			Penalties			TP				
			Tot.	%	9m	6m	Wing	7m	FB	Brk.	LD	As.	E7	E2	TF	St.	C7	Bk	YC		2m	RC	BC	
1	TROOSTER Danique	S												1									52:59	
2	VAN DER LINDEN Lieke																						7:01	
4	VAN DER VLIET Nikita	S	7/8	88		2/3		3/3	2/2					1	1				1	1	1	1	60:00	
5	DE BOER Beau		1/1	100				1/1											1					
6	VAN DER BAAN Britt	S	1/4	25			0/2		1/2						1								57:41	
7	KRULLAARS Nyala	S	8/14	57	5/11				1/1	2/2				1	1	3	2	1					46:56	
8	AMSEN Zola		0/1	0	0/1											5							5:45	
9	TUTERT Floor																						1:43	
11	DEKKER Sarah	S	2/3	67	1/2		1/1								3		4		1				44:05	
13	KRULLAARS Zion		1/2	50	1/2																		2:59	
14	VAN DIEPEN Eva		1/1	100		1/1								1									10:05	
15	HILBRANDS Jessica																							
17	VAN DER GEEST Pien														1								1:41	
19	SPRENGERS Zoë	S	4/9	44	0/1		4/6		0/2					4	2	1		1		1			60:00	
20	THERON Kirsten	S	0/2	0		0/1			0/1						1						1		37:54	
23	NUSSER Larissa		2/5	40	0/2				1/2	1/1				2	1	1	1	1		1			31:11	
	Team / bench																							
	UKUPNO		27/50	54	7/19	3/5	5/9	4/4	5/10	3/3	0/0			9	4	4	15	6	6	3	3	1	0	0

#	Surname and name	Saves / shots								
		Tot.	%	9m	6m	Wing	7m	FB	Brk.	LD
1	TROOSTER Danique	10/35	29	5/15	2/7		1/5	0/5	1/2	1/1
2	VAN DER LINDEN Lieke	1/6	17	1/2	0/1		0/1		0/2	
	TOTAL	11/41	27	6/17	2/8	0/0	1/6	4/5	1/4	1/1

Coach: Ricardo Clarijs

Number of attacks: 56, Efficiency: 48%, Average Duration: 29,7 seconds

### Attack by type of defense

	Shots	9m	6m	Wing	TF	E7	E2
On def. 6-0	18/36	7/19	3/5	5/9	15	4	4
Fastbreak	5/10				0	0	0

### Defense by type

	Total	9m	6m	Wing	Stl.	C7	2m
Def. 6-0	20/38	11/24	6/8	0/1	6	6	1
Fastbreak	5/7				0	0	0

### Attack with goalkeeper out

	Attack				Reaction		
	Att.	Eff.	Shots	TF	FB	LD	Tot.
GK in	56	48%	27/50	15	5/7	0/1	5/8

GK out attack is counted if one part or whole attack was GK out

### Defense with opponent goalkeeper out

	Attack				Reaction		
	Att.	Eff.	Shots	TF	FB	LD	Tot.
GK in	57	53%	30/52	15	5/10	0/0	5/10

### Attack with player superiority/minority

	Attack				Reaction		
	Att.	Eff.	Shots	TF	FB	LD	Tot.
Superiority +1	7	57%	4/5	2	1/1	0/0	1/1
Normal	32	59%	19/34	5	4/5	0/1	4/6
Minority -1	3	33%	1/2	1	0/0	0/0	0/0

Player superiority counted at the end of attack (in case it changes during attack)

### Defense with player superiority/minority

	Attack				Reaction		
	Att.	Eff.	Shots	TF	FB	LD	Tot.
Minority -1	3	0%	0/3	2	0/1	0/0	0/1
Normal	32	59%	19/27	10	5/7	0/0	5/7
Superiority +1	8	63%	5/7	0	0/0	0/0	0/0

# Jersey number Tot. Total shooting 6m 6m (line) shooting 9m 9m shooting Wng. Wing shooting FB Fastbreak sh. 7m 7m penalty sh.  
 Brk. Breakthrough sh. LD Long distance sh. As. Assists E7 Earned 7m pen. TF Technical Faults St. Steals 2m 2m punishments  
 C7. Committed 7m E2 Earned 2m pun. YC. Yellow cards RC Red cards BC Blue cards Bk. Blocks S Starting Line-up



# IHF Women's Youth (U18) World Championship

Poland (Kielce)

Preliminary Round - Group C



Match Team Statistics

Match No. 46

**Russia 30 - 27 Netherlands**

(16 - 12) (14 - 15)

12.8.2018. 16:00

Attendance: 150

Hall Politechnika

Referees: Alexei Covalciuc (MDA) / Igor Covalciuc (MDA)

## Shot distribution by player

4 N. Van Der Vliet

		2/2
	1/1	0/1
2/2		2/2

5 B. De Boer

	1/1	

6 B. Van Der Baan

1/2		

2 post

7 N. Krullaars

	1/1	1/1
1/2		2/3
3/3		

2 post 2 block

8 Z. Amsen

		0/1

9 F. Tutert


11 S. Dekker

		1/1
1/1		

1 miss.

13 Z. Krullaars

1/1		

1 block

14 E. Van Diepen

		1/1

15 J. Hilbrands


17 P. Van Der Geest


19 Z. Sprengers

0/4		1/1
		3/4

20 K. Theron

0/1		
0/1		

23 L. Nusser

0/1		
		0/1
	1/1	1/1

1 miss.

## TOTAL

0/1	1/1	4/4
2/9	1/1	4/8
7/8	2/2	6/7

4 post 2 miss. 3 block

## Saves distribution goalkeepers

1 D. Trooster

	1/1	0/1
1/3	2/2	1/6
1/10	1/2	3/9

2 L. Van Der Linden

0/1		1/1
0/2	0/1	0/1

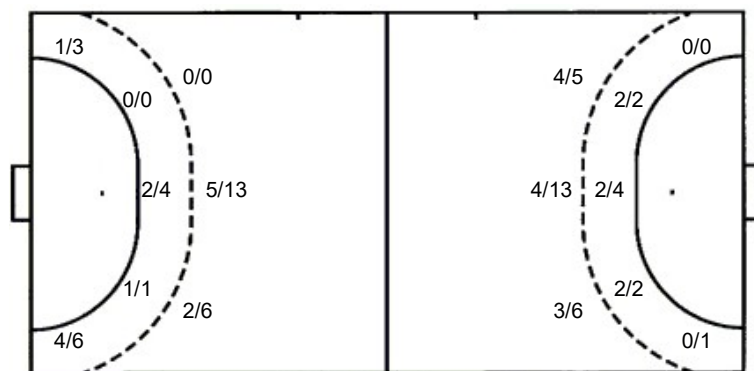
## TOTAL

	1/1	0/1
1/4	2/2	2/7
1/12	1/3	3/10

## Shots by position

ATTACK

DEFENSE



## Shooting statistics

Position	Goals	Sav.	Miss.	Post	Blk.	Total	%
Back (9m)	7	5	2	2	3	19	37
Line (6m)	3	2	0	0	0	5	60
Wing	5	3	0	1	0	9	56
7m penalties	4	0	0	0	0	4	100
Fastbreak	5	4	0	1	0	10	50
Breakthrough	3	0	0	0	0	3	100
<b>Total</b>	<b>27</b>	<b>14</b>	<b>2</b>	<b>4</b>	<b>3</b>	<b>50</b>	<b>54</b>

7m penalties 4/4  
Fastbreak 5/10  
Breakthrough 3/3  
Long dist. 0/0

7m penalties 5/6  
Fastbreak 5/7  
Breakthrough 3/5  
Long dist. 0/1

# Jersey number Tot. Total shooting 6m 6m (line) shooting 9m 9m shooting Wng. Wing shooting FB Fastbreak sh. 7m 7m penalty sh.  
Brk. Breakthrough sh. LD Long distance sh. As. Assists E7 Earned 7m pen. TF Technical Faults St. Steals 2m 2m punishments  
C7. Committed 7m E2 Earned 2m pun. YC. Yellow cards RC Red cards BC Blue cards Blk. Blocks S Starting Line-up