



IHF Women's Youth (U18) World Championship

Poland (Kielce)

Preliminary Round - Group A



Match Team Statistics

Match No. 43

Romania 19 - 19 Angola

(12 - 8) (7 - 11)

12.8.2018. 16:00

Attendance: 250

Hall Legionow

Referees: Georgi Doychinov (BUL) / Yulian Goretsov (BUL)

Shot distribution by player

21. Balaceanu

	0/1	1/1

3 A. Cace

	0/1	
		0/1

1 miss. 1/1 lob

6 A. Coman

7 A. Popa

		1/1

1 miss.

8 M. Barabas

	1/1	
		0/1

9 D. Valcan

		1/1
	1/1	
	1/1	1/1

1 block

10 I. Marin

		1/1
	1/1	

1/2 lob

11 A. Tarsoaga

1/1		

1 post 1 miss. 1/1 lob

15 S. Jipa

18 P. Moraru

1 post

21 R. Stamin

	0/3	

23 M. Ilie

		1/1
2/3		1/1

1 post 1 miss. 0/1 lob

24 M. Pica

	1/1	
		1/1

77 D. Lascateu

1 block

TOTAL

1/1	1/4	1/1
2/3	0/1	3/3
4/5	0/1	4/5

3 post 4 miss. 2 block 3/5 lob

Saves distribution goalkeepers

1 A. Chetraru

		0/1
2/3		
0/3	0/1	0/1

12 D. Ciuca

	1/1	0/2
1/4	1/1	6/9
0/2	4/4	0/2

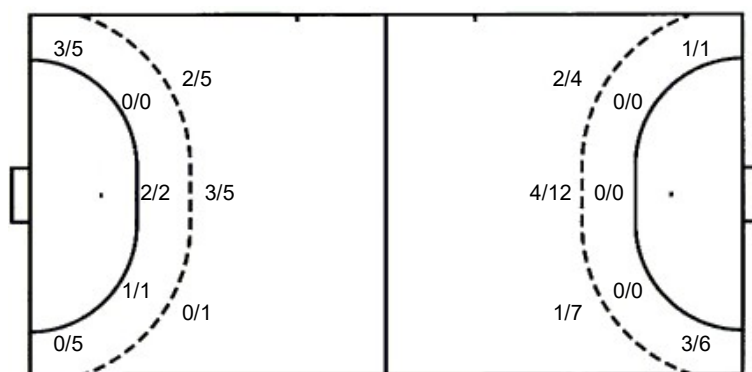
TOTAL

	1/1	0/3
3/7	1/1	6/9
0/5	4/5	0/3

Shots by position

ATTACK

DEFENSE



7m penalties 3/5

Fastbreak 1/5

Breakthrough 4/4

Long dist. 0/0

7m penalties 2/3

Fastbreak 1/5

Breakthrough 5/6

Long dist. 0/0

Shooting statistics

Position	Goals	Sav.	Miss.	Post	Blk.	Total	%
Back (9m)	5	1	3	0	2	11	45
Line (6m)	3	0	0	0	0	3	100
Wing	3	6	0	1	0	10	30
7m penalties	3	2	0	0	0	5	60
Fastbreak	1	1	1	2	0	5	20
Breakthrough	4	0	0	0	0	4	100
Total	19	10	4	3	2	38	50

Jersey number Tot. Total shooting 6m 6m (line) shooting 9m 9m shooting Wng. Wing shooting FB Fastbreak sh. 7m 7m penalty sh.
 Brk. Breakthrough sh. LD Long distance sh. As. Assists E7 Earned 7m pen. TF Technical Faults St. Steals 2m 2m punishment sh.
 C7. Committed 7m E2 Earned 2m pun. YC. Yellow cards RC Red cards BC Blue cards Blk. Blocks S Starting Line-up



IHF Women's Youth (U18) World Championship

Poland (Kielce)

Preliminary Round - Group A



Match Team Statistics

Match No. 43

Romania 19 - 19 Angola

(12 - 8) (7 - 11)

12.8.2018. 16:00

Attendance: 250

Hall Legionow

Referees: Georgi Doychinov (BUL) / Yulian Goretsov (BUL)

Angola

Igraai		Goals / shots										Attack				Def.			Penalties			TP	
#	Surname and name	S	Tot.	%	9m	6m	Wing	7m	FB	Brk.	LD	As.	E7	E2	TF	St.	C7	Blk	YC	2m	RC		BC
1	FREDERICO Paula Francisco																						
3	SUCACUEXE Catarina Paulo S																						
5	ESTEVEES Edna Kiala		0/2	0	0/2							1			2		1	1		1			44:19
6	KIALA Luzia Santana	S	2/4	50	0/2		1/1			1/1					1		2			3			18:35
7	MONTEIRO Jelsia Maria Miguel	S	1/1	100			1/1					1				1							55:35
10	MASSEU Beatriz Diana	S	11/20	55	4/11			2/3	1/2	4/4			2	2	4		2	1					54:58
11	CASTRO Thayany Cacaica B																						
12	DA SILVA Paulina Bazolau	S																					49:27
13	TCHITONGUA Isabel Marcelino		1/4	25	1/4																		9:20
14	COIO Ana Jandira A		0/1	0					0/1						1					1			35:24
18	GABRIEL Chelsia Cristina	S	0/2	0	0/1					0/1			1	1	2								29:34
19	SEBASTIAO Zuraida Agnela M.	S	1/1	100	1/1															2			29:35
20	FERREIRA LÍgia Alexandra J																						6:56
26	ROSARIO Dolores Palmira L.	S	2/7	29			2/5		0/2						1	1							52:18
29	MATEUS Rossana Sebastiao		1/2	50	1/2																		33:59
Team / bench																							
UKUPNO			19/44	43	7/23	0/0	4/7	2/3	1/5	5/6	0/0	2	3	3	11	2	5	2	0	7	0	0	

Goalkeepers		Saves / shots								
#	Surname and name	Tot.	%	9m	6m	Wing	7m	FB	Brk.	LD
1	FREDERICO Paula Francisco									
12	DA SILVA Paulina Bazolau	8/26	31	1/6	0/3	6/9	0/2	1/2	0/4	
20	FERREIRA LÍgia Alexandra J	2/3	67			2/3				
TOTAL		10/29	34	1/6	0/3	6/9	2/5	3/2	0/4	0/0

Coach:

Number of attacks: 48, Efficiency: 40%, Average Duration: 45,7 seconds

Attack by type of defense

	Shots	9m	6m	Wing	TF	E7	E2
On def. 6-0	14/32	6/20	0/0	3/6	10	3	3
On def. 5-1	2/4	1/3	0/0	1/1	0	0	0
On def. 4-2	0/0	0/0	0/0	0/0	1	0	0
Fastbreak	1/5				0	0	0

Defense by type

	Total	9m	6m	Wing	Stl.	C7	2m
Def. 6-0	7/14	3/6	1/1	2/6	2	3	4
Def. 4-2	8/14	2/5	2/2	1/4	0	1	2
Def. 3-2-1	0/0	0/0	0/0	0/0	0	1	1
Fastbreak	1/5				0	0	0

Attack with goalkeeper out

	Attack				Reaction		
	Att.	Eff.	Shots	TF	FB	LD	Tot.
GK in	48	40%	19/44	11	1/5	0/0	1/5

GK out attack is counted if one part or whole attack was GK out

Defense with opponent goalkeeper out

	Attack				Reaction		
	Att.	Eff.	Shots	TF	FB	LD	Tot.
GK in	48	40%	19/38	12	1/5	0/0	1/5

Attack with player superiority/minority

	Attack				Reaction		
	Att.	Eff.	Shots	TF	FB	LD	Tot.
Superiority +2	2	100%	2/2	0	0/0	0/0	0/0
Superiority +1	5	60%	3/5	1	0/0	0/0	0/0
Normal	27	26%	7/24	6	1/4	0/0	1/4
Minority -1	10	60%	6/9	3	0/0	0/0	0/0

Player superiority counted at the end of attack (in case it changes during attack)

Defense with player superiority/minority

	Attack				Reaction		
	Att.	Eff.	Shots	TF	FB	LD	Tot.
Minority -2	2	50%	1/2	0	0/0	0/0	0/0
Minority -1	11	27%	3/10	1	0/0	0/0	0/0
Normal	27	44%	12/21	8	1/5	0/0	1/5
Superiority +1	3	0%	0/1	2	0/0	0/0	0/0
Superiority +2	2	100%	2/2	0	0/0	0/0	0/0

Jersey number Tot. Total shooting 6m 6m (line) shooting 9m 9m shooting Wng. Wing shooting FB Fastbreak sh. 7m 7m penalty sh.
 Brk. Breakthrough sh. LD Long distance sh. As. Assists E7 Earned 7m pen. TF Technical Faults St. Steals 2m 2m punishments
 C7. Committed 7m E2 Earned 2m pun. YC. Yellow cards RC Red cards BC Blue cards Blk. Blocks S Starting Line-up



IHF Women's Youth (U18) World Championship

Poland (Kielce)

Preliminary Round - Group A



Match Team Statistics

Match No. 43

Romania 19 - 19 Angola

(12 - 8) (7 - 11)

12.8.2018. 16:00

Attendance: 250

Hall Legionow

Referees: Georgi Doychinov (BUL) / Yulian Goretsov (BUL)

Shot distribution by player

3 C. Sucacuexe

5 E. Esteves

		0/1

1 block

6 L. Kiala

1/2		
		1/1

1 block

7 J. Monteiro

1/1		

10 B. Masseur

		1/1
1/1		3/7
4/4	0/1	2/2

1 post 2 miss. 1 block

11 T. Castro

13 I. Tchitongua

0/1		
	1/1	

2 miss.

14 A. Coio

0/1		

18 C. Gabriel

		0/1

1 block

19 Z. Sebastiao

		1/1

26 D. Rosario

2/3	0/1	
	0/2	

1 miss.

29 R. Mateus

	0/1	1/1

TOTAL

	0/1	3/3
4/7	0/1	3/9
5/5	1/5	3/3

1 post 5 miss. 4 block

Saves distribution goalkeepers

1 P. Frederico

12 P. Da Silva

0/1	3/4	0/1
1/2		0/3
1/5	1/1	0/4

20 L. Ferreira

0/1	1/1	
		1/1

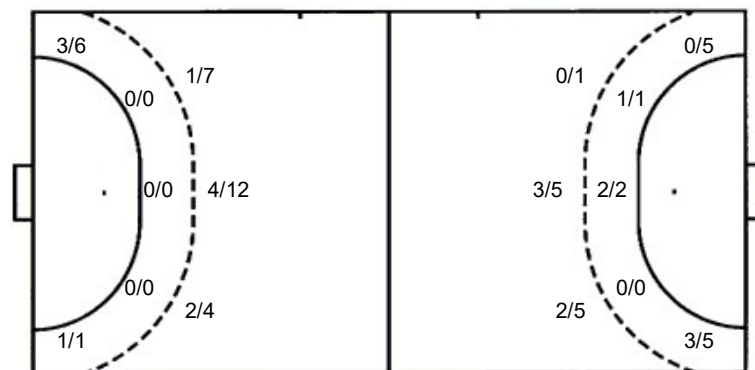
TOTAL

0/1	3/4	0/1
1/3	1/1	0/3
1/5	1/1	1/5

Shots by position

ATTACK

DEFENSE



7m penalties 2/3
Fastbreak 1/5
Breakthrough 5/6
Long dist. 0/0

7m penalties 3/5
Fastbreak 1/5
Breakthrough 4/4
Long dist. 0/0

Shooting statistics

Position	Goals	Sav.	Miss.	Post	Blk.	Total	%
Back (9m)	7	8	4	0	4	23	30
Line (6m)	0	0	0	0	0	0	0
Wing	4	3	0	0	0	7	57
7m penalties	2	1	0	0	0	3	67
Fastbreak	1	2	1	1	0	5	20
Breakthrough	5	1	0	0	0	6	83
Total	19	15	5	1	4	44	43

Jersey number Tot. Total shooting 6m 6m (line) shooting 9m 9m shooting Wng. Wing shooting FB Fastbreak sh. 7m 7m penalty sh.
Brk. Breakthrough sh. LD Long distance sh. As. Assists E7 Earned 7m pen. TF Technical Faults St. Steals 2m 2m punishments
C7. Committed 7m E2 Earned 2m pun. YC. Yellow cards RC Red cards BC Blue cards Blk. Blocks S Starting Line-up