



# IHF Women's Youth (U18) World Championship

## Poland (Kielce)

### Preliminary Round - Group A



Match Team Statistics

Match No. 3

## Poland 26 - 19 Angola

(13 - 10) (13 - 9)

7.8.2018. 18:30

Attendance: 3000

Hall Legionow

Referees: Viktoriia Alpaidze (RUS) / Tatiana Berezkina (RUS)

### Poland

#	Surname and name	S	Goals / shots									Attack				Def.			Penalties			TP			
			Tot.	%	9m	6m	Wing	7m	FB	Brk.	LD	As.	E7	E2	TF	St.	C7	Blk	YC	2m	RC		BC		
1	WDOWIAK Paulina	S																						41:53	
2	OLEK Aleksandra	S	1/1	100	1/1										1		1						1		60:00
4	CYGAN Katarzyna	S	0/2	0	0/2										1		4	1	1						36:44
5	STANISŁAWCZYK Kinga		2/2	100	1/1											2	1	1					2		34:24
7	SOBECKA Lucyna	S	2/5	40	1/3	1/2																	1		31:38
8	WIĘCKOWSKA Magda	S	5/8	63	5/7					0/1						1	4						1		41:55
10	ZAGRAJEK Julia		4/5	80	1/2	1/1					1/1	1/1			1	2									28:22
11	HARIC Gabriela																1								0:42
12	CHODAKOWSKA Marta																								0:25
13	SZCZEPANIK Nikola	S	6/10	60			3/5	3/4	0/1							2	2	1	1						53:04
14	DWORNICZUK Julia															2									6:08
15	BURY Nadia																								
16	ZIMA Barbara		1/1	100													1								17:42
20	BOROWSKA Dominika																								
23	PIETRAS Julia	S	5/9	56		1/1	3/6		1/2						1	1							1		59:48
24	KOWALIK Emilia																								7:15
	Team / bench																								
	UKUPNO		26/43	60	9/16	3/4	6/11	3/5	2/4	2/2	1/1		0	4	6	16	4	2	1	1	5	0	0		

#	Surname and name	Saves / shots								
		Tot.	%	9m	6m	Wing	7m	FB	Brk.	LD
1	WDOWIAK Paulina	3/13	23	2/8	0/1		0/1	1/3		
12	CHODAKOWSKA Marta	0/1	0				0/1			
16	ZIMA Barbara	7/15	47	6/12		1/2	0/1			
	TOTAL	10/29	34	8/20	0/1	1/2	0/3	1/3	0/0	0/0

Coach: Agnieszka Truszyńska

Number of attacks: 58, Efficiency: 45%, Average Duration: 35,8 seconds

### Attack by type of defense

	Shots	9m	6m	Wing	TF	E7	E2
On def. 6-0	16/29	7/14	1/2	6/11	14	4	6
On def. 5-1	4/4	2/2	2/2	0/0	2	0	0
Fastbreak	2/4				0	0	0

### Defense by type

	Total	9m	6m	Wing	Stl.	C7	2m
Def. 6-0	12/25	11/24	1/1	0/0	4	2	3
Def. 5-1	1/7	1/6	0/0	0/1	0	0	1
Def. 3-2-1	1/3	0/1	0/1	1/1	0	0	1
Fastbreak	2/3				0	0	0

### Attack with goalkeeper out

	Attack				Reaction		
	Att.	Eff.	Shots	TF	FB	LD	Tot.
GK in	58	45%	26/43	16	2/3	0/0	2/3

GK out attack is counted if one part or whole attack was GK out

### Defense with opponent goalkeeper out

	Attack				Reaction		
	Att.	Eff.	Shots	TF	FB	LD	Tot.
GK in	57	32%	18/40	18	2/4	1/1	3/5

### Attack with player superiority/minority

	Attack				Reaction		
	Att.	Eff.	Shots	TF	FB	LD	Tot.
Superiority +2	3	67%	2/3	0	0/0	0/0	0/0
Superiority +1	6	50%	3/3	3	0/0	0/0	0/0
Normal	24	50%	12/20	5	0/0	0/0	0/0
Minority -1	17	35%	6/11	5	2/3	0/0	2/3
Minority -2	3	100%	3/3	0	0/0	0/0	0/0

Player superiority counted at the end of attack (in case it changes during attack)

### Defense with player superiority/minority

	Attack				Reaction		
	Att.	Eff.	Shots	TF	FB	LD	Tot.
Minority -2	3	33%	1/1	1	0/0	0/0	0/0
Minority -1	19	26%	5/11	8	0/1	0/0	0/1
Normal	23	39%	9/22	2	2/3	0/0	2/3
Superiority +1	7	43%	3/4	4	0/0	0/0	0/0
Superiority +2	1	0%	0/1	0	0/0	1/1	1/1

# Jersey number Tot. Total shooting 6m 6m (line) shooting 9m 9m shooting Wng Wing shooting FB Fastbreak sh. 7m 7m penalty sh.  
 Brk. Breakthrough sh. LD Long distance sh. As. Assists E7 Earned 7m pen. TF Technical Faults St. Steals 2m 2m punishments  
 C7. Committed 7m E2 Earned 2m pun. YC. Yellow cards RC Red cards BC Blue cards Blk. Blocks S Starting Line-up



# IHF Women's Youth (U18) World Championship

Poland (Kielce)

Preliminary Round - Group A



Match Team Statistics

Match No. 3

**Poland 26 - 19 Angola**

(13 - 10) (13 - 9)

7.8.2018. 18:30

Attendance: 3000

Hall Legionow

Referees: Viktoriia Alpaidze (RUS) / Tatiana Berezkina (RUS)

## Shot distribution by player

**2 A. Olek**

		1/1

**4 K. Cygan**


1 post 1 miss.

**5 K. Stanisławczyk**

		2/2

**7 L. Sobocka**

		1/2
		1/1

1 post 1 miss.

**8 M. Więckowska**

		1/1
		2/2

2 miss.

**10 J. Zagrajek**

		2/2
		2/2

1 post

**11 G. Haric**


**13 N. Szczepanik**

2/2	1/1	0/2
		1/3
1/1		1/1

**14 J. Dworniczuk**


**15 N. Bury**


**20 D. Borowska**


**23 J. Pietras**

		0/1
		0/1

1 post 1 miss. 5/5 lob

**24 E. Kowalik**


**TOTAL**

4/4	1/1	0/3
2/4		8/11
3/3	1/1	1/1

4 post 5 miss. 5/5 lob

## Saves distribution goalkeepers

**1 P. Wdowiak**

0/1	0/1	0/1
2/4		1/3
0/1		0/1

**12 M.**

**Chodakowska**

		0/1

**16 B. Zima**

	0/1	0/4
		5/5
0/1	1/2	1/2

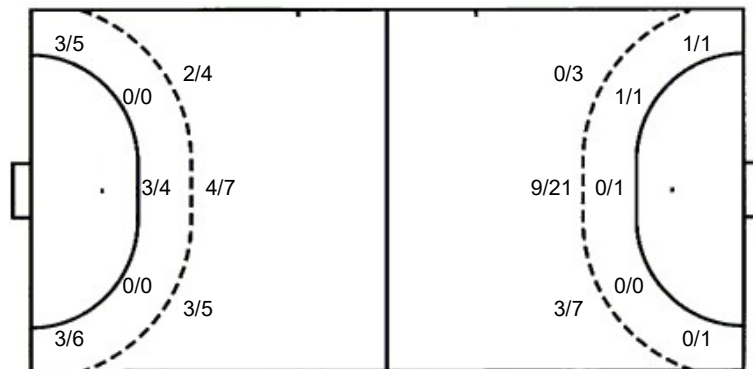
**TOTAL**

0/1	0/2	0/6
2/4		6/8
0/2	1/2	1/3

## Shots by position

**ATTACK**

**DEFENSE**



7m penalties 3/5

Fastbreak 2/4

Breakthrough 2/2

Long dist. 1/1

7m penalties 3/3

Fastbreak 2/3

Breakthrough 0/0

Long dist. 0/0

## Shooting statistics

Position	Goals	Sav.	Miss.	Post	Blk.	Total	%
<b>Back (9m)</b>	9	2	2	3	0	16	56
<b>Line (6m)</b>	3	0	1	0	0	4	75
<b>Wing</b>	6	4	1	0	0	11	55
<b>7m penalties</b>	3	1	1	0	0	5	60
<b>Fastbreak</b>	2	1	0	1	0	4	50
<b>Breakthrough</b>	2	0	0	0	0	2	100
<b>Total</b>	<b>25</b>	<b>8</b>	<b>5</b>	<b>4</b>	<b>0</b>	<b>42</b>	<b>60</b>

# Jersey number    Tot. Total shooting    6m 6m (line) shooting    9m 9m shooting    Wng. Wing shooting    FB Fastbreak sh.    7m 7m penalty sh.  
 Brk. Breakthrough sh.    LD Long distance sh.    As. Assists    E7 Earned 7m pen.    TF Technical Faults    St. Steals    2m 2m punishments  
 C7. Committed 7m    E2 Earned 2m pun.    YC. Yellow cards    RC Red cards    BC Blue cards    Blk. Blocks    S Starting Line-up



# IHF Women's Youth (U18) World Championship

## Poland (Kielce)

### Preliminary Round - Group A



Match Team Statistics

Match No. 3

## Poland 26 - 19 Angola

(13 - 10) (13 - 9)

7.8.2018. 18:30

Attendance: 3000

Hall Legionow

Referees: Viktoriia Alpaidze (RUS) / Tatiana Berezkina (RUS)

### Angola

#	Surname and name	S	Goals / shots									Attack				Def.			Penalties			TP	
			Tot.	%	9m	6m	Wing	7m	FB	Brk.	LD	As.	E7	E2	TF	St.	C7	Blk	YC	2m	RC		BC
1	FREDERICO Paula Francisco	S																					24:25
3	SUCACUEXE Catarina Paulo S																						14:10
5	ESTEVEES Edna Kiala		1/3	33	1/3																		16:20
6	KIALA Luzia Santana	S	7/11	64	6/9		0/1	1/1							2	2							38:34
7	MONTEIRO Jelsia Maria Miguel	S	2/2	100			1/1		1/1								1				1		44:42
10	MASSEU Beatriz Diana		3/8	38	1/5	0/1			2/2						2	3							29:11
11	CASTRO Thayany Cacaica B																	1					10:18
12	DA SILVA Paulina Bazolau															1							29:08
13	TCHITONGUA Isabel Marcelino		2/3	67	2/2					0/1						3	1				1		16:27
14	COIO Ana Jandira A																						2:49
18	GABRIEL Chelsia Cristina	S	1/8	13	0/7	1/1									1	1	3				1		46:32
19	SEBASTIAO Zuraida Agnela M.	S													1	1					1		48:50
20	FERREIRA LÍgia Alexandra J																						
26	ROSARIO Dolores Palmira L.	S														1	1	1					45:55
29	MATEUS Rossana Sebastiao	S	3/6	50	2/5					1/1						3		2		1	2		52:39
Team / bench																							
UKUPNO			19/41	46	12/31	1/2	1/2	3/3	2/3	0/0	0/0	0	2	5	18	3	4	0	1	6	0	0	

#	Surname and name	Saves / shots								
		Tot.	%	9m	6m	Wing	7m	FB	Brk.	LD
1	FREDERICO Paula Francisco	1/11	9	0/3	0/2	1/4		0/1	0/1	
12	DA SILVA Paulina Bazolau	7/21	33	2/8	0/1	3/6	1/3	1/2	0/1	
20	FERREIRA LÍgia Alexandra J	0/1	0				0/1			
TOTAL		8/33	24	2/11	0/3	4/10	1/4	2/3	0/2	0/0

Coach:

Number of attacks: 58, Efficiency: 33%, Average Duration: 26,2 seconds

### Attack by type of defense

	Shots	9m	6m	Wing	TF	E7	E2
On def. 6-0	12/25	11/24	1/1	0/0	16	2	3
On def. 5-1	1/7	1/6	0/0	0/1	1	0	1
On def. 3-2-1	1/3	0/1	0/1	1/1	1	0	1
Fastbreak	2/3				0	0	0

### Defense by type

	Total	9m	6m	Wing	Stl.	C7	2m
Def. 6-0	16/29	7/14	1/2	6/11	2	4	6
Def. 5-1	4/4	2/2	2/2	0/0	1	0	0
Fastbreak	2/4				0	0	0

### Attack with goalkeeper out

	Attack				Reaction		
	Att.	Eff.	Shots	TF	FB	LD	Tot.
GK out (7 on 6)	1	100%	1/1	0	0/0	0/0	0/0
GK in	57	32%	18/40	18	2/4	1/1	3/5

GK out attack is counted if one part or whole attack was GK out

### Attack with player superiority/minority

	Attack				Reaction		
	Att.	Eff.	Shots	TF	FB	LD	Tot.
Superiority +2	3	33%	1/1	1	0/0	0/0	0/0
Superiority +1	19	26%	5/11	8	0/1	0/0	0/1
Normal	23	39%	9/22	2	2/3	0/0	2/3
Minority -1	7	43%	3/4	4	0/0	0/0	0/0
Minority -2	1	0%	0/1	0	0/0	1/1	1/1

Player superiority counted at the end of attack (in case it changes during attack)

### Defense with opponent goalkeeper out

	Attack				Reaction		
	Att.	Eff.	Shots	TF	FB	LD	Tot.
GK out (7 on 6)	0	0%	0/0	0	0/0	0/0	0/0
GK in	58	45%	26/43	16	2/3	0/0	2/3

### Defense with player superiority/minority

	Attack				Reaction		
	Att.	Eff.	Shots	TF	FB	LD	Tot.
Minority -2	3	67%	2/3	0	0/0	0/0	0/0
Minority -1	6	50%	3/3	3	0/0	0/0	0/0
Normal	24	50%	12/20	5	0/0	0/0	0/0
Superiority +1	17	35%	6/11	5	2/3	0/0	2/3
Superiority +2	3	100%	3/3	0	0/0	0/0	0/0

# Jersey number Tot. Total shooting 6m 6m (line) shooting 9m 9m shooting Wng. Wing shooting FB Fastbreak sh. 7m 7m penalty sh.  
 Brk. Breakthrough sh. LD Long distance sh. As. Assists E7 Earned 7m pen. TF Technical Faults St. Steals 2m 2m punishments  
 C7. Committed 7m E2 Earned 2m pun. YC. Yellow cards RC Red cards BC Blue cards Blk. Blocks S Starting Line-up



# IHF Women's Youth (U18) World Championship

Poland (Kielce)

Preliminary Round - Group A



Match Team Statistics

Match No. 3

**Poland 26 - 19 Angola**

(13 - 10) (13 - 9)

7.8.2018. 18:30

Attendance: 3000

Hall Legionow

Referees: Viktoriia Alpaidze (RUS) / Tatiana Berezkina (RUS)

## Shot distribution by player

3 C. Sucacuexe


5 E. Esteves

		1/1
	0/1	0/1

6 L. Kiala

		1/1
1/1		2/4
1/1	1/1	1/1

1 post 1 miss.

7 J. Monteiro

	1/1	
		1/1

10 B. Masseur

		3/3
0/1		

4 miss.

11 T. Castro


13 I. Tchitongua

		1/1
		0/1
1/1		

14 A. Coio


18 C. Gabriel

0/1		0/3

2 miss. 1 block 1/1 lob

19 Z. Sebastiao


26 D. Rosario


29 R. Mateus

1/1	1/1	
1/1		

3 miss.

**TOTAL**

1/1	2/2	6/6
2/4		2/8
2/2	1/2	2/3

1 post 10 miss. 1 block 1/1 lob

## Saves distribution goalkeepers

1 P. Frederico

0/1	0/1	
		1/6
	0/1	

12 P. Da Silva

0/3		3/3
2/4		2/5
0/2		0/1

20 L. Ferreira

		0/1
0/1		

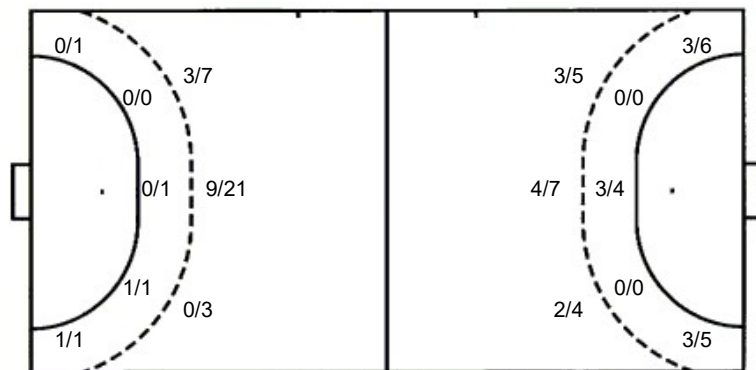
**TOTAL**

0/4	0/1	3/3
2/4		3/12
0/3	0/1	0/1

## Shots by position

ATTACK

DEFENSE



7m penalties 3/3  
Fastbreak 2/3  
Breakthrough 0/0  
Long dist. 0/0

7m penalties 3/5  
Fastbreak 2/4  
Breakthrough 2/2  
Long dist. 1/1

## Shooting statistics

Position	Goals	Sav.	Miss.	Post	Blk.	Total	%
Back (9m)	12	8	9	1	1	31	39
Line (6m)	1	0	1	0	0	2	50
Wing	1	1	0	0	0	2	50
7m penalties	3	0	0	0	0	3	100
Fastbreak	2	1	0	0	0	3	67
Breakthrough	0	0	0	0	0	0	0
<b>Total</b>	<b>19</b>	<b>10</b>	<b>10</b>	<b>1</b>	<b>1</b>	<b>41</b>	<b>46</b>

# Jersey number Tot. Total shooting 6m 6m (line) shooting 9m 9m shooting Wng. Wing shooting FB Fastbreak sh. 7m 7m penalty sh.  
Brk. Breakthrough sh. LD Long distance sh. As. Assists E7 Earned 7m pen. TF Technical Faults St. Steals 2m 2m punishments  
C7. Committed 7m E2 Earned 2m pun. YC. Yellow cards RC Red cards BC Blue cards Blk. Blocks S Starting Line-up