



IHF Women's Youth (U18) World Championship

Poland (Kielce)

Preliminary Round - Group B



Match Team Statistics

Denmark 28 - 16 Chile

11.8.2018. 16:00

Match No. 37

(12 - 8) (16 - 8)

Attendance: 110

Hall Legionow

Referees: Georgi Doychinov (BUL) / Yulian Goretsov (BUL)

Denmark

#	Surname and name	S	Goals / shots									Attack				Def.			Penalties			TP		
			Tot.	%	9m	6m	Wing	7m	FB	Brk.	LD	As.	E7	E2	TF	St.	C7	Blk	YC	2m	RC		BC	
1	ASKVIST Laura Louisa Ferlov																							20:13
2	GAMYS Sylvie	S	1/1	100				1/1																33:47
3	HEDEGAARD Frederikke Glavind	S	1/2	50				0/1		1/1														25:01
4	KLOSTERMANN Mette Katrine		1/1	100		1/1																		1:09
5	THEIL Emilie Frese												1											32:40
6	FROKJAER-JENSEN Naja		1/2	50		1/2										2			3					28:19
7	STEFFENSEN Emilie Bodholdt	S	4/7	57	1/3	0/1			1/1	2/2			1		3	1			1	1				26:36
8	LAURSEN Emma		1/1	100						1/1			1			1		1						22:21
9	MOLLER Michala Elsberg	S	1/2	50	0/1				1/1						2									30:11
12	KRISTENSEN Anna Opstrup																							
13	HANSEN Christina Jakobsen	S	4/4	100		3/3			1/1				1	1	1			2		2				47:44
14	WIERZBA Anna Berger	S	5/7	71	1/2				1/1	2/3	1/1		4		4									48:54
17	FAARTOFT Camilla		3/7	43	0/3				1/1		2/3				1			1	1					23:49
20	JENSEN Louise Bak	S																						27:19
21	HANSEN Andrea U Aagot		3/3	100			3/3												1					37:23
24	HALILCEVIC Elma		3/3	100	1/1	1/1	1/1								1									14:34
	Team / bench																							
	UKUPNO		28/40	70	3/10	6/8	5/6	1/1	5/5	7/9	1/1		7	1	4	11	0	3	3	2	7	0	0	

#	Surname and name	Saves / shots								
		Tot.	%	9m	6m	Wing	7m	FB	Brk.	LD
1	ASKVIST Laura Louisa Ferlov	6/12	50	2/2	0/2		2/2		2/6	
12	KRISTENSEN Anna Opstrup									
20	JENSEN Louise Bak	4/12	33	1/2	0/1	1/2	0/1	0/1	2/5	
	TOTAL	10/24	42	3/4	0/3	1/2	2/3	0/1	4/11	0/0

Coach: Flemming Dam Larsen

Number of attacks: 46, Efficiency: 61%, Average Duration: 38,2 seconds

Attack by type of defense

	Shots	9m	6m	Wing	TF	E7	E2
On def. 6-0	6/9	1/2	3/4	2/2	2	0	2
On def. 5-1	0/1	0/1	0/0	0/0	1	0	0
On def. 4-2	4/6	1/1	0/1	1/1	2	0	1
On def. 3-2-1	10/14	1/4	3/3	2/3	5	1	1
On def. 3-3	1/3	0/2	0/0	0/0	1	0	0
Fastbreak	5/5				0	0	0

Defense by type

	Total	9m	6m	Wing	Stl.	C7	2m
Def. 6-0	11/31	1/14	2/3	1/2	0	2	4
Def. 5-1	1/2	0/1	1/1	0/0	0	1	2
Def. 3-2-1	0/0	0/0	0/0	0/0	0	0	1
Fastbreak	1/1				0	0	0

Attack with goalkeeper out

	Attack				Reaction		
	Att.	Eff.	Shots	TF	FB	LD	Tot.
GK out (7 on 6)	1	100%	1/1	0	0/0	0/0	0/0
GK out pl. minority	2	50%	1/2	0	0/0	0/0	0/0
GK in	43	60%	26/37	11	1/1	2/2	3/3

GK out attack is counted if one part or whole attack was GK out

Attack with player superiority/minority

	Attack				Reaction		
	Att.	Eff.	Shots	TF	FB	LD	Tot.
Superiority +2	2	100%	2/2	0	0/0	0/0	0/0
Superiority +1	4	100%	4/4	0	0/0	0/0	0/0
Normal	15	53%	8/12	4	0/0	0/0	0/0
Minority -1	9	56%	5/9	2	0/0	2/2	2/2
Minority -2	1	0%	0/1	0	0/0	0/0	0/0

Player superiority counted at the end of attack (in case it changes during attack)

Defense with opponent goalkeeper out

	Attack				Reaction		
	Att.	Eff.	Shots	TF	FB	LD	Tot.
GK out (7 on 6)	1	100%	1/1	1	0/0	0/0	0/0
GK out pl. super.	1	100%	1/1	0	0/0	0/0	0/0
GK in	45	31%	14/37	11	5/5	1/1	6/6

Defense with player superiority/minority

	Attack				Reaction		
	Att.	Eff.	Shots	TF	FB	LD	Tot.
Minority -2	1	0%	0/1	1	0/0	0/0	0/0
Minority -1	11	55%	6/10	2	0/0	0/0	0/0
Normal	15	27%	4/11	5	1/1	0/0	1/1
Superiority +1	3	0%	0/1	2	0/0	0/0	0/0
Superiority +2	2	50%	1/1	1	0/0	1/1	1/1

Jersey number Tot. Total shooting 6m 6m (line) shooting 9m 9m shooting Wng Wing shooting FB Fastbreak sh. 7m 7m penalty sh.
 Brk. Breakthrough sh. LD Long distance sh. As. Assists E7 Earned 7m pen. TF Technical Faults St. Steals 2m 2m punishments
 C7. Committed 7m E2 Earned 2m pun. YC. Yellow cards RC Red cards BC Blue cards Blk. Blocks S Starting Line-up



IHF Women's Youth (U18) World Championship

Poland (Kielce)

Preliminary Round - Group B



Match Team Statistics

Match No. 37

Denmark 28 - 16 Chile

(12 - 8) (16 - 8)

11.8.2018. 16:00

Attendance: 110

Hall Legionow

Referees: Georgi Doychinov (BUL) / Yulian Goretsov (BUL)

Shot distribution by player

2 S. Gamys

1/1		

3 F. Hedegaard

	0/1	1/1

4 M. Klostermann

1/1		

5 E. Theil

6 N. Frokjaer-Jensen

0/1		1/1

7 E. Steffensen

	0/1	
	0/1	1/1
1/1	1/1	1/1

1 miss.

8 E. Laursen

		1/1

9 M. Moller

1/1		

1 block

13 C. Hansen

1/1		1/1
1/1		1/1

14 A. Wierzba

3/3		
2/2		

1 post 1 miss.

17 C. Faartoft

0/3		
	1/1	1/1
1/1		

1 post

21 A. Hansen

1/1		2/2

24 E. Haliicevic

1/1		2/2

TOTAL

7/10	0/1	3/3
1/2	1/2	6/6
6/6	1/2	3/3

2 post 2 miss. 1 block

Saves distribution goalkeepers

1 L. Askvist

0/3	3/3	
0/1	0/1	1/1
0/1		1/2

12 A. Kristensen

20 L. Jensen

1/3		
1/1		
1/3	1/2	0/3

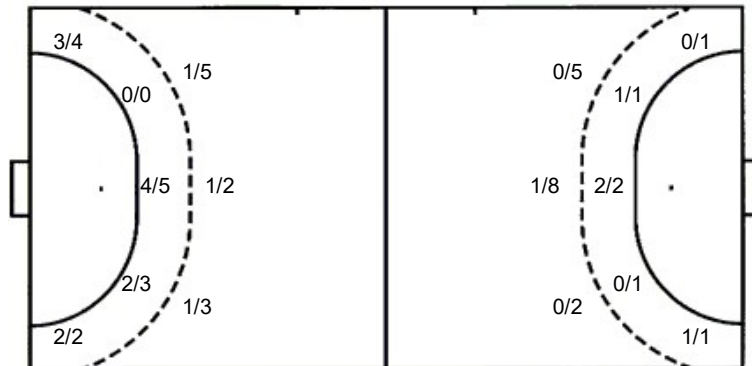
TOTAL

1/6	3/3	
1/2	0/1	1/1
1/4	1/2	1/5

Shots by position

ATTACK

DEFENSE



7m penalties 1/1
Fastbreak 5/5
Breakthrough 7/9
Long dist. 1/1

7m penalties 1/3
Fastbreak 1/1
Breakthrough 7/12
Long dist. 2/2

Shooting statistics

Position	Goals	Sav.	Miss.	Post	Blk.	Total	%
Back (9m)	3	4	0	2	1	10	30
Line (6m)	6	1	1	0	0	8	75
Wing	5	1	0	0	0	6	83
7m penalties	1	0	0	0	0	1	100
Fastbreak	5	0	0	0	0	5	100
Breakthrough	7	1	1	0	0	9	78
Total	27	7	2	2	1	39	69

Jersey number Tot. Total shooting 6m 6m (line) shooting 9m 9m shooting Wng. Wing shooting FB Fastbreak sh. 7m 7m penalty sh.
Brk. Breakthrough sh. LD Long distance sh. As. Assists E7 Earned 7m pen. TF Technical Faults St. Steals 2m 2m punishments
C7. Committed 7m E2 Earned 2m pun. YC. Yellow cards RC Red cards BC Blue cards Blk. Blocks S Starting Line-up



IHF Women's Youth (U18) World Championship

Poland (Kielce)

Preliminary Round - Group B



Match Team Statistics

Denmark 28 - 16 Chile

11.8.2018. 16:00

Match No. 37

(12 - 8) (16 - 8)

Attendance: 110

Hall Legionow

Referees: Georgi Doychinov (BUL) / Yulian Goretsov (BUL)

Chile

#	Surname and name	S	Goals / shots									Attack				Def.			Penalties			TP			
			Tot.	%	9m	6m	Wing	7m	FB	Brk.	LD	As.	E7	E2	TF	St.	C7	Blk	YC	2m	RC		BC		
1	PARRA Francisca	S	2/7	29	0/4									2/3	1		1	1							44:01
2	BAUMANN Javiera	S																							2:50
3	ALVAREZ Fernanda	S	2/2	100			1/1											1			1				42:14
4	SEPULVEDA Valentina	S	1/7	14	0/3	0/1			0/1					1/2	2	1		1	1						40:10
8	ARAYA Josefa	S	4/10	40	1/4	1/1								2/5		1	1	2	1						43:27
9	SEPULVEDA Catalina																			1		1			20:49
10	ALARCON Sofia																								
13	REBOLLEDO Antonia		2/3	67					1/2	1/1									2						49:00
14	GOMEZ Sofia		2/3	67	0/1						1/1	1/1							1						12:25
15	CORTEZ Madeleine	S	1/1	100										1/1											56:20
16	RAMIREZ Evelyn																								16:53
17	PACHECO Pia	S	2/2	100		2/2									1	4	1					1			52:13
20	DIAZ Constanza		0/3	0	0/3														1						14:13
22	GAJARDO Martina		0/1	0			0/1												1			1			14:27
31	YARELLI Leon																								10:58
44	ANDRADE Javiera																								
	Team / bench																								
	UKUPNO		16/39	41	1/15	3/4	1/2	1/3	1/1	7/12	2/2	3	3	6	12	2	1	1	0	4	0	0			

#	Surname and name	Saves / shots								
		Tot.	%	9m	6m	Wing	7m	FB	Brk.	LD
15	CORTEZ Madeleine	7/34	21	4/7	1/7	1/6	0/1	0/5	1/8	
44	ANDRADE Javiera									
	TOTAL	7/34	21	4/7	1/7	1/6	0/1	0/5	1/8	0/0

Coach: Felipe Barrientos

Number of attacks: 47, Efficiency: 34%, Average Duration: 39,2 seconds

Attack by type of defense

	Shots	9m	6m	Wing	TF	E7	E2
On def. 6-0	11/31	1/14	2/3	1/2	9	2	3
On def. 5-1	1/2	0/1	1/1	0/0	3	1	2
On def. 3-2-1	0/0	0/0	0/0	0/0	0	0	1
Fastbreak	1/1				0	0	0

Defense by type

	Total	9m	6m	Wing	Stl.	C7	2m
Def. 6-0	6/9	1/2	3/4	2/2	2	0	2
Def. 5-1	0/1	0/1	0/0	0/0	0	0	0
Def. 4-2	4/6	1/1	0/1	1/1	0	0	1
Def. 3-2-1	10/14	1/4	3/3	2/3	0	1	1
Def. 3-3	1/3	0/2	0/0	0/0	0	0	0
Fastbreak	5/5				0	0	0

Attack with goalkeeper out

	Attack				Reaction		
	Att.	Eff.	Shots	TF	FB	LD	Tot.
GK out (7 on 6)	1	100%	1/1	1	0/0	0/0	0/0
GK out pl. minority	1	100%	1/1	0	0/0	0/0	0/0
GK in	45	31%	14/37	11	5/5	1/1	6/6

GK out attack is counted if one part or whole attack was GK out

Attack with player superiority/minority

	Attack				Reaction		
	Att.	Eff.	Shots	TF	FB	LD	Tot.
Superiority +2	1	0%	0/1	1	0/0	0/0	0/0
Superiority +1	11	55%	6/10	2	0/0	0/0	0/0
Normal	15	27%	4/11	5	1/1	0/0	1/1
Minority -1	3	0%	0/1	2	0/0	0/0	0/0
Minority -2	2	50%	1/1	1	0/0	1/1	1/1

Player superiority counted at the end of attack (in case it changes during attack)

Defense with opponent goalkeeper out

	Attack				Reaction		
	Att.	Eff.	Shots	TF	FB	LD	Tot.
GK out (7 on 6)	1	100%	1/1	0	0/0	0/0	0/0
GK out pl. super.	2	50%	1/2	0	0/0	0/0	0/0
GK in	43	60%	26/37	11	1/1	2/2	3/3

Defense with player superiority/minority

	Attack				Reaction		
	Att.	Eff.	Shots	TF	FB	LD	Tot.
Minority -2	2	100%	2/2	0	0/0	0/0	0/0
Minority -1	4	100%	4/4	0	0/0	0/0	0/0
Normal	15	53%	8/12	4	0/0	0/0	0/0
Superiority +1	9	56%	5/9	2	0/0	2/2	2/2
Superiority +2	1	0%	0/1	0	0/0	0/0	0/0

Jersey number Tot. Total shooting 6m 6m (line) shooting 9m 9m shooting Wng Wing shooting FB Fastbreak sh. 7m 7m penalty sh.
 Brk. Breakthrough sh. LD Long distance sh. As. Assists E7 Earned 7m pen. TF Technical Faults St. Steals 2m 2m punishments
 C7. Committed 7m E2 Earned 2m pun. YC. Yellow cards RC Red cards BC Blue cards Blk. Blocks S Starting Line-up



IHF Women's Youth (U18) World Championship

Poland (Kielce)

Preliminary Round - Group B



Match Team Statistics

Match No. 37

Denmark 28 - 16 Chile

(12 - 8) (16 - 8)

11.8.2018. 16:00

Attendance: 110

Hall Legionow

Referees: Georgi Doychinov (BUL) / Yulian Goretsov (BUL)

Shot distribution by player

1 F. Parra

	0/2	
1/1		

3 miss. 1/1 lob

2 J. Baumann

3 F. Alvarez

2/2		

4 V. Sepulveda

		0/1
		1/1

2 post 2 block 0/1 lob

8 J. Araya

2/2		
0/1		
0/1		2/3

1 post 2 miss.

9 C. Sepulveda

10 S. Alarcon

13 A. Rebolledo

	0/1	
1/1		1/1

14 S. Gomez

1/1		
1/1		

1 post

16 E. Ramirez

17 P. Pacheco

2/2		

20 C. Diaz

	0/1	

1 miss. 1 block

22 M. Gajardo

0/1		

31 L. Yarelli

TOTAL

5/6	0/3	
1/2		0/1
3/4	1/2	4/5

4 post 6 miss. 3 block 1/2 lob

Saves distribution goalkeepers

15 M. Cortez

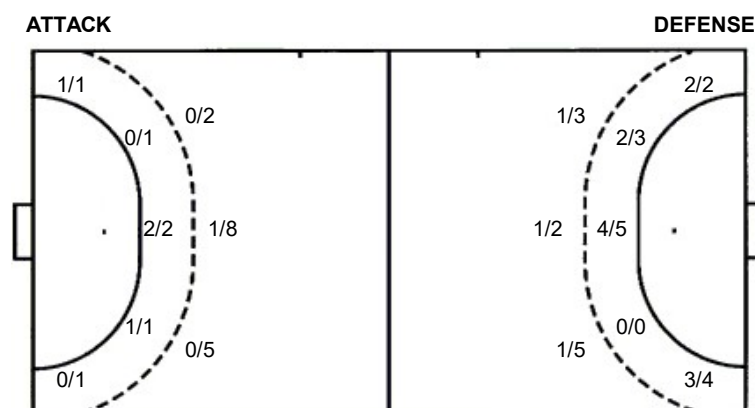
3/10	1/1	0/3
1/2	1/2	0/6
0/6	1/2	0/3

44 J. Andrade

TOTAL

3/10	1/1	0/3
1/2	1/2	0/6
0/6	1/2	0/3

Shots by position



Shooting statistics

Position	Goals	Sav.	Miss.	Post	Blk.	Total	%
Back (9m)	1	3	6	2	3	15	7
Line (6m)	3	0	0	1	0	4	75
Wing	1	1	0	0	0	2	50
7m penalties	1	2	0	0	0	3	33
Fastbreak	1	0	0	0	0	1	100
Breakthrough	7	4	0	1	0	12	58
Total	14	10	6	4	3	37	38

Jersey number Tot. Total shooting 6m 6m (line) shooting 9m 9m shooting Wng. Wing shooting FB Fastbreak sh. 7m 7m penalty sh.
Brk. Breakthrough sh. LD Long distance sh. As. Assists E7 Earned 7m pen. TF Technical Faults St. Steals 2m 2m punishment sh.
C7. Committed 7m E2 Earned 2m pun. YC. Yellow cards RC Red cards BC Blue cards Blk. Blocks S Starting Line-up