



IHF Women's Youth (U18) World Championship

Poland (Kielce)

Preliminary Round - Group C



Match Team Statistics

Match No. 32

Russia 31 - 17 Japan

(17 - 8) (14 - 9)

10.8.2018. 18:00

Attendance: 50

Hall Politechnika

Referees: Denis Bolic (AUT) / Christoph Hurich (AUT)

Russia

#	Surname and name	S	Goals / shots									Attack				Def.			Penalties			TP				
			Tot.	%	9m	6m	Wing	7m	FB	Brk.	LD	As.	E7	E2	TF	St.	C7	Blk	YC	2m	RC		BC			
3	CHERNIAEVA Mariia	S	2/2	100		1/1	1/1										1									36:16
16	KOLESNIKOVA Nadezda																									
23	MIKHAYLICHENKO Elena	S	3/4	75	1/1					2/2	0/1				2											20:14
30	VERESHCHAK Anna	S	1/1	100																1/1						43:27
35	SHEINA Anna		0/1	0											2		2			0/1			1			24:03
40	SINELNIKOVA Alina	S	2/3	67	0/1	2/2								1	1	1		1	1							41:43
49	KRAKHMALEVA Sofia															1							1			28:46
53	TURUSINA Viktoriia		3/5	60	2/2	0/1	0/1			1/1						3			1							41:20
56	SKIVKO Ekaterina		6/7	86	2/3					1/1	2/2	1/1				1	2									29:56
61	MASLOVA Valeriia	S	1/2	50	1/2																					11:27
68	SIDNINA Elina		3/7	43	3/6	0/1								1	1	1										25:44
74	KIRDIASHEVA Valeriia		3/4	75	1/2	1/1				1/1																6:30
79	LEVCHINA Ekaterina	S	1/2	50			1/2									1	1									31:14
84	MUKHINA Kristina	S	5/6	83	1/2				1/1	2/2	1/1				3	2			2							39:36
90	SMIRNOVA Elena		1/2	50	1/2										3											27:07
91	KARABUTOVA Ekaterina																									12:37
	Team / bench																									
	UKUPNO		31/46	67	12/21	4/6	2/4	2/2	6/6	3/4	2/3	1	2	6	15	4	2	4	1	2	0	0				

#	Surname and name	Saves / shots																							
		Tot.	%	9m	6m	Wing	7m	FB	Brk.	LD															
16	KOLESNIKOVA Nadezda																								
30	VERESHCHAK Anna	16/28	57	7/11		6/10	0/1	2/5	1/1																
91	KARABUTOVA Ekaterina	2/7	29	2/4			0/1	0/2																	
	TOTAL	18/35	51	9/15	0/0	6/10	0/2	2/7	1/1	0/0															

Coach: Liubov Sidoricheva

Number of attacks: 58, Efficiency: 53%, Average Duration: 28,4 seconds

Attack by type of defense

	Shots	9m	6m	Wing	TF	E7	E2
On def. 6-0	21/35	12/21	4/6	2/4	15	2	6
Fastbreak	6/6				0	0	0

Defense by type

	Total	9m	6m	Wing	Stl.	C7	2m
Def. 6-0	10/36	6/24	0/0	4/11	4	2	2
Fastbreak	5/7				0	0	0

Attack with goalkeeper out

	Attack				Reaction		
	Att.	Eff.	Shots	TF	FB	LD	Tot.
GK in	58	53%	31/45	15	5/7	0/0	5/7

GK out attack is counted if one part or whole attack was GK out

Defense with opponent goalkeeper out

	Attack				Reaction		
	Att.	Eff.	Shots	TF	FB	LD	Tot.
GK in	51	24%	12/37	17	6/6	2/3	8/9

Attack with player superiority/minority

	Attack				Reaction		
	Att.	Eff.	Shots	TF	FB	LD	Tot.
Superiority +2	2	100%	2/3	0	0/0	0/0	0/0
Superiority +1	15	67%	10/13	2	0/1	0/0	0/1
Normal	30	40%	12/22	10	4/5	0/0	4/5
Minority -1	3	0%	0/0	3	1/1	0/0	1/1

Player superiority counted at the end of attack (in case it changes during attack)

Defense with player superiority/minority

	Attack				Reaction		
	Att.	Eff.	Shots	TF	FB	LD	Tot.
Minority -1	4	50%	2/4	1	0/0	0/0	0/0
Normal	30	30%	9/24	9	2/2	0/1	2/3
Superiority +1	13	38%	5/10	3	1/1	1/1	2/2
Superiority +2	3	0%	0/2	1	1/1	0/0	1/1

Jersey number Tot. Total shooting 6m 6m (line) shooting 9m 9m shooting Wng. Wing shooting FB Fastbreak sh. 7m 7m penalty sh.
 Brk. Breakthrough sh. LD Long distance sh. As. Assists E7 Earned 7m pen. TF Technical Faults St. Steals 2m 2m punishments
 C7. Committed 7m E2 Earned 2m pun. YC. Yellow cards RC Red cards BC Blue cards Blk. Blocks S Starting Line-up



IHF Women's Youth (U18) World Championship

Poland (Kielce)

Preliminary Round - Group C



Match Team Statistics

Match No. 32

Russia 31 - 17 Japan

(17 - 8) (14 - 9)

10.8.2018. 18:00

Attendance: 50

Hall Politechnika

Referees: Denis Bolic (AUT) / Christoph Hurich (AUT)

Shot distribution by player

3 M. Cherniaeva

	1/1	

1/1 lob

23 E. Mikhaylichenko

		1/1
0/1		1/1
		1/1

35 A. Sheina

1 miss.

40 A. Sinelnikova

		1/1
1/1		0/1

49 S. Krakhmaleva

53 V. Turusina

	1/1	1/1
0/1		0/1
		1/1

56 E. Skivko

1/1		
2/2	1/1	1/1
		1/1

1 miss.

61 V. Maslova

	0/1	1/1

68 E. Sidnina

	1/1	
	0/1	1/2
		1/1

1 miss. 1 block

74 V. Kirdiasheva

		2/2
		1/1

1 post

79 E. Levchina

1 miss. 1/1 lob

84 K. Mukhina

		1/1
		1/1
	1/1	2/2

1 post

90 E. Smirnova

		1/1
0/1		

TOTAL

1/1	2/2	4/4
3/5	1/3	8/11
0/1	2/2	7/7

2 post 4 miss. 1 block 2/2 lob

Saves distribution goalkeepers

16 N. Kolesnikova

30 A. Vereshchak

	3/3	1/1
4/7	1/1	2/3
1/3	2/3	2/6

91 E. Karabutova

0/1		0/1
0/2	2/2	

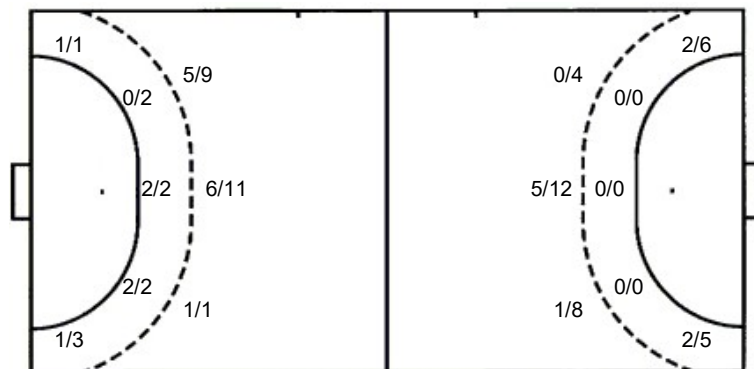
TOTAL

	3/3	1/1
4/8	1/1	2/4
1/5	4/5	2/6

Shots by position

ATTACK

DEFENSE



7m penalties 2/2
Fastbreak 6/6
Breakthrough 3/4
Long dist. 2/3

7m penalties 2/2
Fastbreak 5/7
Breakthrough 0/1
Long dist. 0/0

Shooting statistics

Position	Goals	Sav.	Miss.	Post	Blk.	Total	%
Back (9m)	12	5	1	2	1	21	57
Line (6m)	4	1	1	0	0	6	67
Wing	2	1	1	0	0	4	50
7m penalties	2	0	0	0	0	2	100
Fastbreak	6	0	0	0	0	6	100
Breakthrough	3	1	0	0	0	4	75
Total	29	8	3	2	1	43	67

Jersey number
Brk. Breakthrough sh.
C7. Committed 7m
Tot. Total shooting
LD Long distance sh.
E2 Eearned 2m pun.
6m 6m (line) shooting
As. Assists
Yc. Yellow cards
9m 9m shooting
E7 Eearned 7m pen.
RC Red cards
Wng. Wing shooting
TF Technical Faults
BC Blue cards
FB Fastbreak sh.
St. Steals
Blk. Blocks
7m 7m penalty sh.
2m 2m punishments
S Starting Line-up



IHF Women's Youth (U18) World Championship

Poland (Kielce)

Preliminary Round - Group C



Match Team Statistics

Match No. 32

Russia 31 - 17 Japan

(17 - 8) (14 - 9)

10.8.2018. 18:00

Attendance: 50

Hall Politechnika

Referees: Denis Bolic (AUT) / Christoph Hurich (AUT)

Japan

#	Surname and name	S	Goals / shots								Attack				Def.			Penalties			TP			
			Tot.	%	9m	6m	Wing	7m	FB	Brk.	LD	As.	E7	E2	TF	St.	C7	Blk	YC	2m		RC	BC	
1	CHIBA Natsuki	S																					16:06	
4	TSUJINO Momoka		2/6	33	0/4		1/1			1/1				1		2			1				23:57	
5	ABE Miyuki	S	1/4	25	1/4									1		2				1	1		24:37	
6	ITO Airi	S	5/11	45	5/11											1	1						38:21	
7	HATTORI Sayaka		1/1	100				1/1							1						1		11:33	
9	YASUDA Tsugumi		0/4	0	0/1		0/2			0/1													21:19	
10	OKADA Ayame	S	4/7	57	0/2			1/1	3/3	0/1				1	1	1	2	1					49:43	
13	NUKIMIZU Urara															3							6:05	
14	HIRANO Shuka	S	1/5	20	0/2		1/2			0/1						1	3				2		44:36	
15	TANIFUJI Haruka	S	1/3	33			1/3											1					17:36	
16	KAKIZOE Madoka													1		1							29:59	
17	KUREBAYASHI Shino																	1			2		33:07	
18	EMOTO Hikaru	S	0/2	0			0/2									1							14:59	
19	UJIMURA Yui		2/2	100			1/1			1/1						2							18:11	
20	MORIYA Aoi																						21:39	
21	UEDA Haruka															1							48:12	
	Team / bench																							
	UKUPNO		17/45	38	6/24	0/0	4/11	2/2	5/7	0/1	0/0			4	2	2	18	2	2	1	1	6	0	0

#	Surname and name	Saves / shots								
		Tot.	%	9m	6m	Wing	7m	FB	Brk.	LD
1	CHIBA Natsuki	2/15	13	2/7	0/2	0/1		0/4	0/1	
16	KAKIZOE Madoka	6/22	27	3/10	1/3	1/2	0/2	0/2	1/3	
	TOTAL	8/37	22	5/17	1/5	1/3	0/2	2/6	1/4	0/0

Coach: Jun Tanaka

Number of attacks: 59, Efficiency: 29%, Average Duration: 33,1 seconds

Attack by type of defense

	Shots	9m	6m	Wing	TF	E7	E2
On def. 6-0	10/36	6/24	0/0	4/11	18	2	2
Fastbreak	5/7				0	0	0

Defense by type

	Total	9m	6m	Wing	Stl.	C7	2m
Def. 6-0	21/35	12/21	4/6	2/4	2	2	6
Fastbreak	6/6				0	0	0

Attack with goalkeeper out

	Attack				Reaction		
	Att.	Eff.	Shots	TF	FB	LD	Tot.
GK out (7 on 6)	6	50%	3/6	1	0/0	0/0	0/0
GK out pl. minority	2	100%	2/2	0	0/0	0/0	0/0
GK in	51	24%	12/37	17	6/6	2/3	8/9

GK out attack is counted if one part or whole attack was GK out

Defense with opponent goalkeeper out

	Attack				Reaction		
	Att.	Eff.	Shots	TF	FB	LD	Tot.
GK out (7 on 6)	0	0%	0/1	0	0/0	0/0	0/0
GK out pl. super.	0	0%	0/0	0	0/0	0/0	0/0
GK in	58	53%	31/45	15	5/7	0/0	5/7

Attack with player superiority/minority

	Attack				Reaction		
	Att.	Eff.	Shots	TF	FB	LD	Tot.
Superiority +1	4	50%	2/4	1	0/0	0/0	0/0
Normal	30	30%	9/24	9	2/2	0/1	2/3
Minority -1	13	38%	5/10	3	1/1	1/1	2/2
Minority -2	3	0%	0/2	1	1/1	0/0	1/1

Player superiority counted at the end of attack (in case it changes during attack)

Defense with player superiority/minority

	Attack				Reaction		
	Att.	Eff.	Shots	TF	FB	LD	Tot.
Minority -2	2	100%	2/3	0	0/0	0/0	0/0
Minority -1	15	67%	10/13	2	0/1	0/0	0/1
Normal	30	40%	12/22	10	4/5	0/0	4/5
Superiority +1	3	0%	0/0	3	1/1	0/0	1/1

Jersey number
 Brk. Breakthrough sh.
 C7. Committed 7m
 LD Long distance sh.
 E2 Earned 2m pun.
 6m 6m (line) shooting
 As. Assists
 YC. Yellow cards
 9m 9m shooting
 E7 Earned 7m pen.
 RC Red cards
 Wng. Wing shooting
 TF Technical Faults
 BC Blue cards
 FB Fastbreak sh.
 St. Steals
 Blk. Blocks
 7m 7m penalty sh.
 2m 2m punishments
 S Starting Line-up



IHF Women's Youth (U18) World Championship

Poland (Kielce)

Preliminary Round - Group C



Match Team Statistics

Match No. 32

Russia 31 - 17 Japan

(17 - 8) (14 - 9)

10.8.2018. 18:00

Attendance: 50

Hall Politechnika

Referees: Denis Bolic (AUT) / Christoph Hurich (AUT)

Shot distribution by player

4 M. Tsujino

	0/1	0/1
0/1		
		1/1

1 miss. 1/1 lob

5 M. Abe

	0/1	
		1/1

1 post 1 miss.

6 A. Ito

3/3		
1/2	0/2	1/1

1 post 1 miss. 1 block

7 S. Hattori

		1/1

9 T. Yasuda

0/1		0/1
		0/2

10 A. Okada

0/1		1/2
1/1	1/1	

1 block 1/1 lob

13 U. Nukimizu

14 S. Hirano

	0/1	
0/1		
1/1		

2 block

15 H. Tanifuji

	0/1	
	0/1	1/1

17 S. Kurebayashi

18 H. Emoto

	0/1	

1 miss.

19 Y. Ujimura

1/1		
1/1		

20 A. Moriya

21 H. Ueda

TOTAL

	0/3	0/1
4/8	0/1	2/4
4/5	1/5	4/6

2 post 4 miss. 4 block 2/2 lob

Saves distribution goalkeepers

1 N. Chiba

	0/1	0/2
	1/1	1/4
	0/3	0/4

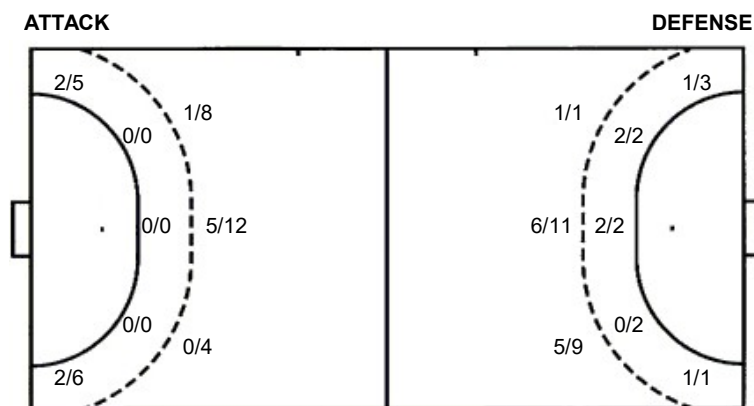
16 M. Kakizoe

0/1	0/1	0/2
2/5	1/2	2/7
1/1		0/3

TOTAL

0/1	0/2	0/4
2/5	2/3	3/11
1/1	0/3	0/7

Shots by position



7m penalties 2/2
Fastbreak 5/7
Breakthrough 0/1
Long dist. 0/0

7m penalties 2/2
Fastbreak 6/6
Breakthrough 3/4
Long dist. 2/3

Shooting statistics

Position	Goals	Sav.	Miss.	Post	Blk.	Total	%
Back (9m)	6	9	3	2	4	24	25
Line (6m)	0	0	0	0	0	0	0
Wing	4	6	1	0	0	11	36
7m penalties	2	0	0	0	0	2	100
Fastbreak	5	2	0	0	0	7	71
Breakthrough	0	1	0	0	0	1	0
Total	17	18	4	2	4	45	38

Jersey number
Brk. Breakthrough sh.
C7. Committed 7m
Tot. Total shooting
LD Long distance sh.
E2 Earned 2m pun.
6m 6m (line) shooting
As. Assists
YC. Yellow cards
9m 9m shooting
E7 Earned 7m pen.
RC Red cards
Wng. Wing shooting
TF Technical Faults
BC Blue cards
FB Fastbreak sh.
St. Steals
Blk. Blocks
7m 7m penalty sh.
2m 2m punishments
S Starting Line-up