



IHF Women's Youth (U18) World Championship

Poland (Kielce)

Preliminary Round - Group A



Match Team Statistics

Romania 22 - 21 Slovakia

7.8.2018. 12:00

Match No. 2

(10 - 11) (12 - 10)

Attendance: 150

Hall Legionow

Referees: Denis Bolic (AUT) / Christoph Hurich (AUT)

Romania

#	Surname and name	S	Goals / shots									Attack				Def.			Penalties			TP												
			Tot.	%	9m	6m	Wing	7m	FB	Brk.	LD	As.	E7	E2	TF	St.	C7	Blk	YC	2m	RC		BC											
1	CHESTRARU Andreea Bianca																																	
2	BALACEANU Ioana Beatrice		4/4	100							4/4											1	1		2									12:49
3	CACE Adina Gabriela	S	3/7	43	0/1			3/5	0/1										1			1											43:01	
6	COMAN Amalia Mihaela																																	
7	POPA Andreea Cristina	S	1/3	33	0/2										1/1			4	1	1	3												33:04	
8	BARABAS Monica Alexandra	S	1/2	50				1/1			0/1						2			1	1	1						1					44:54	
9	VALCAN Denisa Andreea	S	4/7	57	1/1	1/1	1/2	0/1	0/1	1/1							2	2		3	1												46:12	
10	MARIN Iuliana Daniela	S	3/4	75		2/3	1/1											1		1	1	3								1			47:21	
11	TARSOAGA Andreea Rebeca	S	3/6	50	2/5										1/1			1	1	3													38:00	
12	CIUCA Diana Cristiana	S																															60:00	
15	JIPA Stefania Oana																																	6:21
18	MORARU Patricia Valentina		0/2	0	0/2																1													10:26
21	STAMIN Roberta Maria		2/3	67		1/1	1/2													2	1	1											26:56	
23	ILIE Marina Alexandra																				1													22:20
24	PICA Miruna Cristina		1/3	33	0/1	0/1									1/1					1			1										22:57	
77	LASCATEU Diana																					1												5:09
	Team / bench																																	
	UKUPNO		22/41	54	3/12	4/6	7/11	4/6	0/2	4/4	0/0	10	6	2	18	4	7	2	1	5	0	0												

#	Surname and name	Saves / shots																															
		Tot.	%	9m	6m	Wing	7m	FB	Brk.	LD																							
1	CHESTRARU Andreea Bianca	0/1	0				0/1																										
12	CIUCA Diana Cristiana	20/40	50	5/8	1/5	7/13	5/6	1/3	1/5																								
	TOTAL	20/41	49	5/8	1/5	7/13	5/7	1/3	1/5	0/0																							

Coach: Carmen Andreea Amariei

Number of attacks: 61, Efficiency: 36%, Average Duration: 29,6 seconds

Attack by type of defense

	Shots	9m	6m	Wing	TF	E7	E2
On def. 6-0	18/33	3/12	4/6	7/11	15	6	1
On def. 5-1	0/0	0/0	0/0	0/0	0	0	1
On def. 3-3	0/0	0/0	0/0	0/0	3	0	0
Fastbreak	0/2				0	0	0

Defense by type

	Total	9m	6m	Wing	Stl.	C7	2m
Def. 6-0	11/26	2/8	3/4	3/10	4	5	4
Def. 5-1	6/8	1/3	1/1	3/3	0	2	1
Fastbreak	2/3				0	0	0

Attack with goalkeeper out

	Attack				Reaction		
	Att.	Eff.	Shots	TF	FB	LD	Tot.
GK in	61	36%	22/41	18	2/3	0/0	2/3

GK out attack is counted if one part or whole attack was GK out

Attack with player superiority/minority

	Attack				Reaction		
	Att.	Eff.	Shots	TF	FB	LD	Tot.
Superiority +1	7	29%	2/3	5	0/0	0/0	0/0
Normal	27	26%	7/18	8	1/2	0/0	1/2
Minority -1	21	48%	10/14	5	1/1	0/0	1/1

Player superiority counted at the end of attack (in case it changes during attack)

Defense with opponent goalkeeper out

	Attack				Reaction		
	Att.	Eff.	Shots	TF	FB	LD	Tot.
GK in	60	35%	21/44	17	0/2	0/0	0/2

Defense with player superiority/minority

	Attack				Reaction		
	Att.	Eff.	Shots	TF	FB	LD	Tot.
Minority -1	20	40%	8/14	7	0/0	0/0	0/0
Normal	25	24%	6/16	8	0/2	0/0	0/2
Superiority +1	9	44%	4/7	2	0/0	0/0	0/0

Jersey number Tot. Total shooting 6m 6m (line) shooting 9m 9m shooting Wng. Wing shooting FB Fastbreak sh. 7m 7m penalty sh.
Brk. Breakthrough sh. LD Long distance sh. As. Assists E7 Earned 7m pen. TF Technical Faults St. Steals 2m 2m punishments
C7. Committed 7m E2 Earned 2m pun. YC. Yellow cards RC Red cards BC Blue cards Blk. Blocks S Starting Line-up



IHF Women's Youth (U18) World Championship

Poland (Kielce)

Preliminary Round - Group A



Match Team Statistics

Match No. 2

Romania 22 - 21 Slovakia

(10 - 11) (12 - 10)

7.8.2018. 12:00

Attendance: 150

Hall Legionow

Referees: Denis Bolic (AUT) / Christoph Hurich (AUT)

Shot distribution by player

21. Balaceanu

		1/1
2/2		1/1

3 A. Cace

0/2		1/1
		0/1

1 post 2/2 lob

6 A. Coman

7 A. Popa

	1/1	

1 post 1 block

8 M. Barabas

0/1		
		1/1

9 D. Valcan

0/1		
1/1		1/1
0/2		2/2

10 I. Marin

		1/2
1/1		
	1/1	

11 A. Tarsoaga

		1/1
		0/1
1/1		1/1

2 block

15 S. Jipa

18 P. Moraru

1 miss. 1 block

21 R. Stamin

1/1		0/1
1/1		

23 M. Ilie

24 M. Pica

1/1		
0/1		

1 miss.

77 D. Lascateu

TOTAL

1/2	1/1	3/5
3/6		2/3
4/7	1/1	5/6

2 post 2 miss. 4 block 2/2 lob

Saves distribution goalkeepers

1 A. Chetraru

0/1		

12 D. Ciuca

		3/5
4/7		4/10
5/7	0/2	4/9

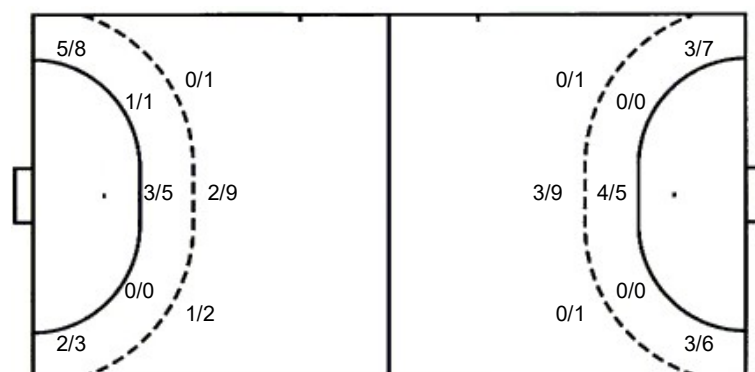
TOTAL

		3/5
4/7		4/10
5/8	0/2	4/9

Shots by position

ATTACK

DEFENSE



7m penalties 4/6
Fastbreak 0/2
Breakthrough 4/4
Long dist. 0/0

7m penalties 2/7
Fastbreak 2/3
Breakthrough 4/5
Long dist. 0/0

Shooting statistics

Position	Goals	Sav.	Miss.	Post	Blk.	Total	%
Back (9m)	3	2	2	1	4	12	25
Line (6m)	4	2	0	0	0	6	67
Wing	7	3	0	1	0	11	64
7m penalties	4	2	0	0	0	6	67
Fastbreak	0	2	0	0	0	2	0
Breakthrough	4	0	0	0	0	4	100
Total	22	11	2	2	4	41	54

Jersey number Tot. Total shooting 6m 6m (line) shooting 9m 9m shooting Wng. Wing shooting FB Fastbreak sh. 7m 7m penalty sh.
Brk. Breakthrough sh. LD Long distance sh. As. Assists E7 Earned 7m pen. TF Technical Faults St. Steals 2m 2m punishment sh.
C7. Committed 7m E2 Earned 2m pun. YC. Yellow cards RC Red cards BC Blue cards Blk. Blocks S Starting Line-up



IHF Women's Youth (U18) World Championship

Poland (Kielce)

Preliminary Round - Group A



Match Team Statistics

Romania 22 - 21 Slovakia

7.8.2018. 12:00

Match No. 2

(10 - 11) (12 - 10)

Attendance: 150

Hall Legionow

Referees: Denis Bolic (AUT) / Christoph Hurich (AUT)

Slovakia

#	Surname and name	S	Goals / shots								Attack				Def.			Penalties			TP					
			Tot.	%	9m	6m	Wing	7m	FB	Brk.	LD	As.	E7	E2	TF	St.	C7	Blk	YC	2m		RC	BC			
2	TREPÁČOVÁ Zuzana	S	6/10	60	1/3			2/3	1/1	2/3			2	2	1	5	2		1							60:00
3	MARCINČÁKOVÁ Daniela		2/6	33		0/1	2/3	0/1	0/1				1													36:54
5	BELUŠKOVÁ Katarína		1/1	100		1/1							1	1								1				11:25
8	PASTOREKOVÁ Edina	S	4/7	57	1/3	1/1		0/1		2/2			3	2	5	1	1	1	1	1	1					49:45
9	MĚSZAROS Réka	S	1/5	20	0/2	1/1		0/2					2		5	1	2	1								48:03
11	RATVAJSKÁ Lenka	S	4/7	57			3/6		1/1				1	1	1	1	1		1							52:42
12	OPÁTOVÁ Kristína																									
14	HOLINCOVÁ Laura																									0:17
17	KAKAŠČIKOVÁ Miriam		1/3	33	1/3							1					1		1							23:45
18	KOŠOVA Nikolett	S	1/4	25			1/4																			22:00
19	MICHÁLKOVÁ Diana	S	1/1	100		1/1											1	1								47:59
22	CHUDOVSKÁ Natália	S																								59:22
25	GALKOVÁ Zuzana														1											7:48
32	OLÁHOVÁ Bella																									
77	MANCZAL Dóra																									
	Team / bench																						1			
	UKUPNO		21/44	48	3/11	4/5	6/13	2/7	2/3	4/5	0/0	6	7	5	17	8	5	4	3	2	0	0				

#	Surname and name	Saves / shots								
		Tot.	%	9m	6m	Wing	7m	FB	Brk.	LD
12	OPÁTOVÁ Kristína	0/1	0				0/1			
22	CHUDOVSKÁ Natália	11/32	34	2/5	2/6	3/10	2/5	2/2	0/4	
32	OLÁHOVÁ Bella									
	TOTAL	11/33	33	2/5	2/6	3/10	2/6	3/2	0/4	0/0

Coach: Rasmus Poulsen

Number of attacks: 60, Efficiency: 35%, Average Duration: 29,9 seconds

Attack by type of defense

	Shots	9m	6m	Wing	TF	E7	E2
On def. 6-0	11/26	2/8	3/4	3/10	13	5	4
On def. 5-1	6/8	1/3	1/1	3/3	4	2	1
Fastbreak	2/3				0	0	0

Defense by type

	Total	9m	6m	Wing	Stl.	C7	2m
Def. 6-0	18/33	3/12	4/6	7/11	5	5	1
Def. 5-1	0/0	0/0	0/0	0/0	2	0	1
Def. 3-3	0/0	0/0	0/0	0/0	1	0	0
Fastbreak	0/2				0	0	0

Attack with goalkeeper out

	Attack				Reaction		
	Att.	Eff.	Shots	TF	FB	LD	Tot.
GK in	60	35%	21/44	17	0/2	0/0	0/2

GK out attack is counted if one part or whole attack was GK out

Defense with opponent goalkeeper out

	Attack				Reaction		
	Att.	Eff.	Shots	TF	FB	LD	Tot.
GK in	61	36%	22/41	18	2/3	0/0	2/3

Attack with player superiority/minority

	Attack				Reaction		
	Att.	Eff.	Shots	TF	FB	LD	Tot.
Superiority +1	20	40%	8/14	7	0/0	0/0	0/0
Normal	25	24%	6/16	8	0/2	0/0	0/2
Minority -1	9	44%	4/7	2	0/0	0/0	0/0

Player superiority counted at the end of attack (in case it changes during attack)

Defense with player superiority/minority

	Attack				Reaction		
	Att.	Eff.	Shots	TF	FB	LD	Tot.
Minority -1	7	29%	2/3	5	0/0	0/0	0/0
Normal	27	26%	7/18	8	1/2	0/0	1/2
Superiority +1	21	48%	10/14	5	1/1	0/0	1/1

Jersey number Tot. Total shooting 6m 6m (line) shooting 9m 9m shooting Wng. Wing shooting FB Fastbreak sh. 7m 7m penalty sh.
 Brk. Breakthrough sh. LD Long distance sh. As. Assists E7 Earned 7m pen. TF Technical Faults St. Steals 2m 2m punishments
 C7. Committed 7m E2 Earned 2m pun. YC. Yellow cards RC Red cards BC Blue cards Blk. Blocks S Starting Line-up



IHF Women's Youth (U18) World Championship

Poland (Kielce)

Preliminary Round - Group A



Match Team Statistics

Match No. 2

Romania 22 - 21 Slovakia

(10 - 11) (12 - 10)

7.8.2018. 12:00

Attendance: 150

Hall Legionow

Referees: Denis Bolic (AUT) / Christoph Hurich (AUT)

Shot distribution by player

2 Z. Trepáčová

		1/1
0/2		3/3
2/3		

1 block

3 D. Marcinčáková

0/1		1/4
		1/1

5 K. Belušková

		1/1

8 E. Pastoreková

		0/1
2/2		2/2
0/1		0/1

9 R. Mészáros

0/2	1/1	0/1

1 block

11 L. Ratvajská

		0/2
1/1		
	1/1	2/3

14 L. Holincová

17 M. Kakaščíková

0/1		
1/1		

1 miss.

18 N. Kósová

		0/1
0/1		1/2

19 D. Micháľková

		1/1

25 Z. Galková

77 D. Manczal

TOTAL

		2/5
3/7		6/10
3/8	2/2	5/9

1 miss. 2 block

Saves distribution goalkeepers

12 K. Opátová

0/1		

22 N. Chudovská

1/2	0/1	2/5
3/6		1/3
3/6	0/1	1/6

32 B. Oláhová

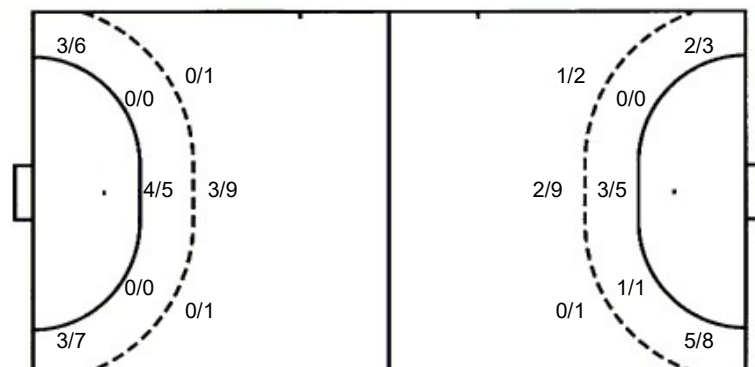
TOTAL

1/2	0/1	2/5
3/6		1/3
3/7	0/1	1/6

Shots by position

ATTACK

DEFENSE



7m penalties 2/7
Fastbreak 2/3
Breakthrough 4/5
Long dist. 0/0

7m penalties 4/6
Fastbreak 0/2
Breakthrough 4/4
Long dist. 0/0

Shooting statistics

Position	Goals	Sav.	Miss.	Post	Blk.	Total	%
Back (9m)	3	5	1	0	2	11	27
Line (6m)	4	1	0	0	0	5	80
Wing	6	7	0	0	0	13	46
7m penalties	2	5	0	0	0	7	29
Fastbreak	2	1	0	0	0	3	67
Breakthrough	4	1	0	0	0	5	80
Total	21	20	1	0	2	44	48

Jersey number Tot. Total shooting 6m 6m (line) shooting 9m 9m shooting Wng. Wing shooting FB Fastbreak sh. 7m 7m penalty sh.
Brk. Breakthrough sh. LD Long distance sh. As. Assists E7 Earned 7m pen. TF Technical Faults St. Steals 2m 2m punishments
C7. Committed 7m E2 Earned 2m pun. YC. Yellow cards RC Red cards BC Blue cards Blk. Blocks S Starting Line-up