

**CUMULATIVE STATISTICS**

ESTADISTICAS ACUMULADAS

**POL - POLAND**  
After 6 matches

Players		MP	Shots								Offence		Defence		Punishments				TP
No.	Name		G/S	%	6m	Wing	9m	7m	FB	BT	AS	TO	ST	BS	YC	2Min	RC	DR	
1	SZMAL Slawomir	6																	4:16:36
2	JASZKA Bartlomiej	6	15/31	49	4/7			1/11		3/5	7/8	6	14	7					3:28:12
3	LIJEWSKI Krzysztof	6	17/39	44	1/1			13/31		1/3	2/4	12	12	6	1	1			4:14:31
8	BIELECKI Karol	6	9/20	45	0/1			8/18			1/1	3	5	2		2			1:33:30
9	BARTCZAK Michal	4	7/8	88	1/1	3/4				3/3		2	1	1					1:20:13
11	WISNIEWSKI Adam	6	11/18	61	1/3	6/9	2/3			1/2	1/1	2	1	5		1			4:35:57
12	WICHARY Marcin	5										1		1					1:43:17
13	JURECKI Bartosz	6	33/39	85	26/31			2/2	4/4	1/2		2	6	3	1	1	3		3:52:50
14	CHODARA Michal	1										1	1	1					18:12
15	JURECKI Michal	5	12/27	45	0/1			8/21		1/1	3/4	9	10	7	7	1	3		3:32:21
18	GRABARCZYK Piotr	3	1/1	100	1/1								1		2	3	3		53:50
20	JURKIEWICZ Mariusz	2	0/1	0	0/1														23:17
22	LIJEWSKI Marcin	3	2/11	18	1/1			1/10				4		2	1		1		51:17
23	SYPRZAK Kamil	5	6/12	50	6/11			0/1				1		2	1		2	1	59:10
30	KRAJEWSKI Przemyslaw	3	4/4	100	2/2	2/2							2	1					1:03:39
31	KUBISZTAL Michal	6	18/31	58	2/2			5/11	5/11	2/3	4/4	6	2	2	3	4	1		3:09:14
35	SZPERA Marek	2	0/1	0				0/1				3	1						13:03
43	ORZECHOWSKI Robert	6	18/28	64	0/1	8/12	0/1	3/5	6/8	1/1		5	2	4			3		5:05:14
	Bench/Team														3				
	Totals		153/271	57	45/64	19/27	40/110	12/20	18/27	19/23		57	63	58	17	14	18	1	

Goalkeepers		Total Shots		6m Shots		Wing Shots		9m Shots		7m Shots		Fast Breaks		Breakthroughs	
No.	Name	S/S	%	S/S	%	S/S	%	S/S	%	S/S	%	S/S	%	S/S	%
1	SZMAL Slawomir	48/146	33	6/21	29	7/15	47	26/70	37	3/13	23	4/15	27	2/12	17
12	WICHARY Marcin	34/73	47	0/2	0	5/11	46	22/41	54	3/9	33	1/4	25	3/6	50
	Totals	82/219	38	6/23	26	12/26	46	48/111	43	6/22	27	5/19	26	5/18	28

Team Shots	Goals	Saves	Missed	Post	Blocked	Total	%
<b>6m Shots</b>	45	13	2	4		64	70
<b>Wing Shots</b>	19	5	2	1		27	71
<b>9m Shots</b>	40	42	8	5	15	110	37
<b>7m Shots</b>	12	4	2	2	n/a	20	60
<b>Fast Breaks</b>	18	6	1	2		27	67
<b>Breakthroughs</b>	19	3		1		23	83
<b>Totals</b>	153	73	15	15	15	271	57

Played		
<b>PR</b>	BLR	24-22
<b>PR</b>	KSA	28-14
<b>PR</b>	SLO	24-25
<b>PR</b>	SRB	25-24
<b>PR</b>	KOR	33-25
<b>EF</b>	HUN	19-27

Number of Attacks: 334 Scoring Efficiency: 46%



**CUMULATIVE STATISTICS**

ESTADISTICAS ACUMULADAS

**POL - POLAND**  
After 6 matches

**Shots Distribution**

**Players**

Goals / Shots

2 JASZKA B			3 LIJEWSKI K			8 BIELECKI K			9 BARTCZAK M			11 WISNIEWSKI A			13 JURECKI B			14 CHODARA M			15 JURECKI M			
1/2		0/1	1/2	0/1	0/1	1/1			2/2			1/2	1/1		1/1	1/3	3/3					2/3		1/1
2/3		3/5	1/5	0/1	2/5	4/7		2/4			0/1	1/3		1/3	1/1		7/8					0/2	0/2	4/6
3/5	3/4	0/1	6/11		7/7	2/4		0/1	3/3	2/2		3/3	1/1	2/2	9/9	4/5	4/4					2/4	1/1	1/1
2-Missed 1-Post 3-Blocked			1-Missed 2-Post 3-Blocked			1-Missed			2-Blocked			1-Missed 1-Post			1-Missed 1-Post						2-Post 4-Blocked			
18 GRABARCZYK P			20 JURKIEWICZ M			22 LIJEWSKI M			23 SYPRZAK K			30 KRAJEWSKI P			31 KUBISZTAL M			35 SZPERA M			43 ORZECHOWSKI R			
							0/1	0/1	2/3	1/1	1/1												3/3	1/1
						0/2			0/1					1/1	3/6		2/3					2/3	0/1	3/3
		1/1				1/3		1/1			1/1	2/2		1/1	7/9	2/2	4/4					4/6	2/2	3/5
1-Missed						2-Missed 1-Post			2-Missed 2-Post						2-Missed 3-Post 2-Blocked			1-Blocked 2-Missed 2-Post						

**Team**

Goals / Shots

10/14	6/11	7/10
14/33	0/4	25/39
42/59	15/17	25/29

15-Missed 5-Post 5-Blocked

**Offence**

**Defence**

**Goalkeepers**

Saves / Shots

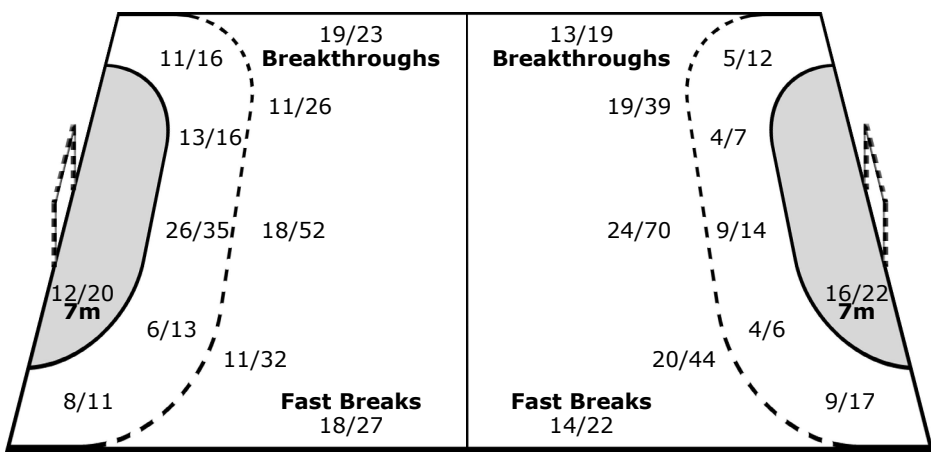
5/10	3/5	2/14
13/26	8/9	17/35
12/51	6/20	6/33

1 SZMAL S

2/6	2/3	2/10
10/16	3/4	11/28
2/29	4/14	4/24

12 WICHARY M

3/4	1/2	0/4
3/10	5/5	6/7
10/22	2/6	2/9



<b>Legend:</b>	% Efficiency	<b>2Min</b> 2 Minute Suspensions	<b>6m</b> 6-metre Shots	<b>7m</b> 7-metre Shots
<b>9m</b> 9-metre Shots	<b>AS</b> Assists	<b>BM</b> Bronze Medal Match	<b>BS</b> Blocked Shots	
<b>BT</b> Breakthroughs	<b>DSQ</b> Disqualified	<b>DR</b> Disqualification with report	<b>FB</b> Fast Breaks	
<b>G/S</b> Goals/Shots	<b>GM</b> Gold Medal Match	<b>MP</b> Matches Played	<b>n/a</b> not applicable	
<b>PL</b> Placement	<b>PR</b> Preliminary Round	<b>QF</b> Quarterfinal	<b>RC</b> Red Cards	
<b>S/S</b> Saves/Shots	<b>SF</b> Semifinal	<b>ST</b> Steals	<b>TO</b> Turnovers	
<b>TP</b> Time Played	<b>Wing</b> Wing Shots	<b>YC</b> Yellow Cards		

