

## CUMULATIVE STATISTICS

ESTADÍSTICAS ACUMULADAS

### BRA - BRAZIL After 6 matches

Players		MP	Shots								Offence		Defence		Punishments				TP
No.	Name		G/S	%	6m	Wing	9m	7m	FB	BT	AS	TO	ST	BS	YC	2Min	RC	DR	
3	PACHECO Fernando José	6	28/53	53	1/1			15/36	6/9	1/2	5/5	12	5	3	4	2	3		3:48:32
7	GAMA Guilherme	4	3/9	33				2/8			1/1	1	2	1	2		1		1:05:35
9	CANDIDO Lucas	6	14/23	61	2/2	4/11	1/1			6/8	1/1		3	2		1	3		4:24:14
10	PIRES Gil Vicente	6	2/8	25	0/1	2/4	0/1			0/2		2	1		1	2			1:58:18
11	SANTOS Thiago	6	6/11	55	1/1			3/7	1/2		1/1	4	5	4	1	4	7		2:36:06
13	HUBNER Diogo	6	4/13	31	1/1			2/9			1/3	4	5		2				3:41:30
14	SANTOS Thiago	6	5/10	50	0/1			2/5		1/2	2/2	2	5	6	4	5	4		2:42:13
15	PATRIANOVA Arthur	6	22/43	51	0/2			18/34	2/4		2/3	2	8	5	2				2:23:57
17	POZZER Alexandro	4	5/12	42	4/10			0/1		1/1		2	2	2	1	2			1:28:38
18	RIBEIRO Felipe	6	22/39	57	6/7	8/12	0/1	3/8	5/10	0/1		3	8	6		1	1	1	4:26:09
19	CHIUFFA Fabio	4	2/6	33		2/6						4			1				1:23:40
21	CARDOSO Gustavo	6	12/24	50				8/19			4/5	7	6	1					3:03:57
22	GUIMARÃES Oswaldo	4	8/17	47				7/16		1/1		1	6	1		1			45:20
25	TEIXEIRA Vinicius	6	15/22	68	14/21		1/1					1	2						1:59:56
81	NASCIMENTO Luis Ricardo	6										1		1					4:34:57
89	ALMEIDA Cesar	4											1						1:54:29
Bench/Team																			
Totals			148/290	51	29/47	16/33	59/139	12/23	15/26	17/22	40	65	42	13	18	24	1		

Goalkeepers		Total Shots		6m Shots		Wing Shots		9m Shots		7m Shots		Fast Breaks		Breakthroughs	
No.	Name	S/S	%	S/S	%	S/S	%	S/S	%	S/S	%	S/S	%	S/S	%
7	GAMA Guilherme														
81	NASCIMENTO Luis Ricardo	49/163	30	9/35	26	9/21	43	23/61	38	3/10	30	1/13	8	4/23	18
89	ALMEIDA Cesar	16/56	29	4/11	37	2/8	25	6/11	55	1/8	13	1/7	14	2/11	18
Totals		65/219	30	13/46	28	11/29	38	29/72	40	4/18	22	2/20	10	6/34	18

Team Shots	Goals	Saves	Missed	Post	Blocked	Total	%
<b>6m Shots</b>	29	13	2	3		47	62
<b>Wing Shots</b>	16	14		3		33	49
<b>9m Shots</b>	59	42	13	8	17	139	43
<b>7m Shots</b>	12	5	1	5	n/a	23	52
<b>Fast Breaks</b>	15	9	1	1		26	58
<b>Breakthroughs</b>	17	4	1			22	77
<b>Totals</b>	148	87	18	20	17	290	51

Played		
<b>PR</b>	GER	23-33
<b>PR</b>	ARG	24-20
<b>PR</b>	FRA	22-27
<b>PR</b>	TUN	27-22
<b>PR</b>	MNE	26-25
<b>R16</b>	RUS	26-27

Number of Attacks:355 Scoring Efficiency: 42%

## CUMULATIVE STATISTICS

ESTADÍSTICAS ACUMULADAS

### BRA - BRAZIL After 6 matches

#### Shots Distribution

#### Players

Goals / Shots

3 PACHECO FJ	7 GAMA G	9 CANDIDO L	10 PIRES GV	11 SANTOS T	13 HUBNER D	14 SANTOS T	15 PATRIANOVA A
3/3	1/1	4/5					
6/6	0/1	2/4					
3/7	1/1	6/11					

4-Missed 5-Post 3-Blocked

7 GAMA G	9 CANDIDO L	10 PIRES GV	11 SANTOS T	13 HUBNER D	14 SANTOS T	15 PATRIANOVA A
		3/3	1/1	1/3		
		1/1	1/2	0/1		
	0/2	3/3	6/6	0/2	1/2	

1-Post 2-Blocked

9 CANDIDO L	10 PIRES GV	11 SANTOS T	13 HUBNER D	14 SANTOS T	15 PATRIANOVA A
3/3	1/1	1/3			
1/1	1/2	0/1			
6/6	0/2	1/2			

2-Post

10 PIRES GV	11 SANTOS T	13 HUBNER D	14 SANTOS T	15 PATRIANOVA A
1/1	0/1			
		0/4		
		1/1		

1-Post

11 SANTOS T	13 HUBNER D	14 SANTOS T	15 PATRIANOVA A
	1/1	1/1	
1/1			
1/2	2/3		

2-Missed 1-Post

13 HUBNER D	14 SANTOS T	15 PATRIANOVA A
	1/1	
1/4	0/1	0/1
1/2	0/1	1/2

1-Missed

14 SANTOS T	15 PATRIANOVA A
	1/1
	1/1
1/1	0/3
2/2	

2-Blocked 2-Missed 4-Post 3-Blocked

17 POZZER A	18 RIBEIRO F	19 CHIUFFA F	21 CARDOSO G	22 GUIMARÃES O	25 TEIXEIRA V	81 NASCIMENTO LR	89 ALMEIDA C
0/1							
1/1							
	1/2	2/2					

1-Post

18 RIBEIRO F	19 CHIUFFA F	21 CARDOSO G	22 GUIMARÃES O	25 TEIXEIRA V	81 NASCIMENTO LR	89 ALMEIDA C
1/2	1/5	3/4				
1/3	0/3	3/3				
5/6	3/5	4/4				

2-Missed 1-Post

19 CHIUFFA F	21 CARDOSO G	22 GUIMARÃES O	25 TEIXEIRA V	81 NASCIMENTO LR	89 ALMEIDA C
		1/1			
		2/4			
0/1	0/1	1/1			

3-Missed 2-Post 5-Blocked 2-Missed 1-Post 2-Blocked 2-Missed 1-Post

21 CARDOSO G	22 GUIMARÃES O	25 TEIXEIRA V	81 NASCIMENTO LR	89 ALMEIDA C
		1/1		
		2/4		
6/6	1/1	2/2		

22 GUIMARÃES O	25 TEIXEIRA V	81 NASCIMENTO LR	89 ALMEIDA C
1/1			
	0/1	0/1	
1/2	6/8		

25 TEIXEIRA V	81 NASCIMENTO LR	89 ALMEIDA C
2/2	1/1	2/2
2/3	0/1	0/1
2/3	6/6	

2-Missed 1-Post

81 NASCIMENTO LR	89 ALMEIDA C

89 ALMEIDA C

#### Team

Goals / Shots

13/15	7/12	14/20
20/28	1/10	10/27
26/38	15/29	39/53

18-Missed 20-Post 7-Blocked

#### Offence

#### Defence

#### Goalkeepers

Saves / Shots

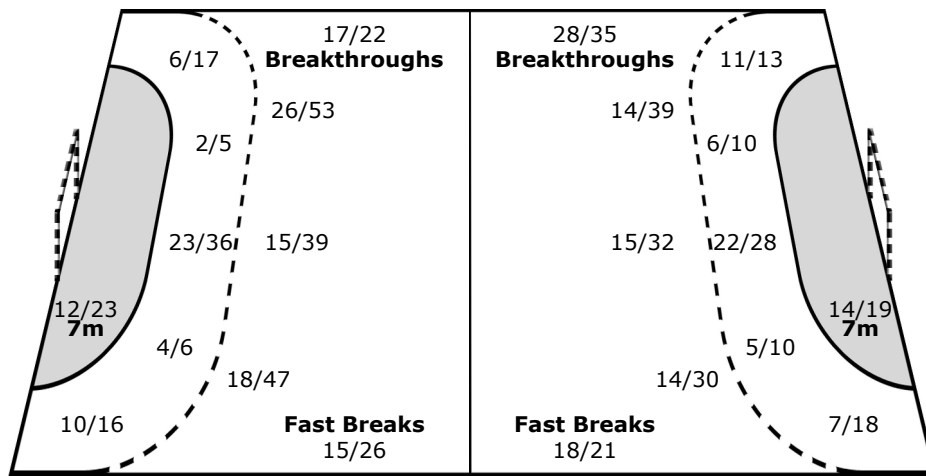
5/15	4/10	6/20
13/28	9/12	9/26
6/39	6/23	6/42

#### 81 NASCIMENTO LR

4/12	4/7	4/15
10/22	7/10	7/20
5/30	3/16	5/28

#### 89 ALMEIDA C

1/3	0/3	2/5
3/6	2/2	2/6
1/9	3/7	1/14



<b>Legend:</b>	% Efficiency	<b>2Min</b> 2 Minute Suspensions	<b>6m</b> 6-metre Shots	<b>7m</b> 7-metre Shots
<b>9m</b> 9-metre Shots	<b>AS</b> Assists	<b>BM</b> Bronze Medal Match	<b>BS</b> Blocked Shots	
<b>BT</b> Breakthroughs	<b>DSQ</b> Disqualified	<b>DR</b> Disqualification with report	<b>FB</b> Fast Breaks	
<b>G/S</b> Goals/Shots	<b>GM</b> Gold Medal Match	<b>MP</b> Matches Played	<b>n/a</b> not applicable	
<b>PL</b> Placement	<b>PR</b> Preliminary Round	<b>QF</b> Quarterfinal	<b>RC</b> Red Cards	
<b>S/S</b> Saves/Shots	<b>SF</b> Semifinal	<b>ST</b> Steals	<b>TO</b> Turnovers	
<b>TP</b> Time Played	<b>Wing</b> Wing Shots	<b>YC</b> Yellow Cards		

