



Match Team Statistics

Estatística da partida por equipe / Statistiques du match par équipe

Match 12

ANG 27 - 25 MNE

(12 - 12) (15 - 13)

Referees: ALPAIDZE Viktoriia / BEREZKINA Tatiana (RUS)

ANG - Angola

Players		Shots								Offence		Defence		Punishments			TP	
No.	Name	G/S	%	6m	Wing	9m	7m	FB	BT	AS	TO	ST	BS	YC	2Min	RC		BC
1	BARBOSA Neide Marisa de P.																	0:00
6	MACHADO Juliana Jose	1/3	33	0/1	1/2					1					1			53:29
8	MONTEIRO Lurdes Marcelina	2/3	67			1/2		1/1		1					1			27:55
9	BERNARDO Natalia Maria	5/8	63	1/2				3/3	1/3	5	1							52:14
10	KASSOMA Albertina Cruz	5/5	100	5/5						2			1	1	2			41:10
11	KIALA Luisa										2							17:21
12	BRANCO Cristina Direito																	19:27
15	CARLOS Azenaide Daniela	3/7	43	1/3	1/1	1/3				1	2							18:25
16	ALMEIDA Teresa Patricia																	40:33
17	DOMBAXI Wuta Waco Bige	1/2	50		0/1	1/1									1	1		23:08
21	CAZANGA Magda Alfredo	2/7	29	1/2		0/4		1/1		1	2			1				37:44
25	VENANCIO Liliana da Silva	1/1	100	1/1							2				3			27:11
31	SANTOS Janete Viegas dos	0/1	0	0/1							1							26:47
90	GUIALO Isabel Evelize W.	7/13	54	1/1		0/4	4/4	1/1	1/3	1		1						34:36
Bench/Team											2							
Totals		27/50	54	10/16	2/4	3/14	4/4	6/6	2/6	12	12	1	1	2	8	1		

Goalkeepers		Total Shots		6m Shots		Wing Shots		9m Shots		7m Shots		Fast Breaks		Breakthroughs	
No.	Name	S/S	%	S/S	%	S/S	%	S/S	%	S/S	%	S/S	%	S/S	%
1	BARBOSA Neide Marisa de P.														
12	BRANCO Cristina Direito	4/12	33	0/1	0	2/3	67	2/3	67	0/2	0	0/2	0	0/1	0
16	ALMEIDA Teresa Patricia	12/29	41	3/6	50	5/9	56	4/7	57	0/3	0	0/3	0	0/1	0
Totals		16/41	39	3/7	43	7/12	58	6/10	60	0/5	0	0/5	0	0/2	0

Team Shots	Goals	Saves	Missed	Post	Blocked	Total	%
6m Shots	10	4	1	1		16	63
Wing Shots	2	1	1			4	50
9m Shots	3	7	3	1		14	21
7m Shots	4				N/A	4	100
Fast Breaks	6					6	100
Breakthroughs	2	2	1	1		6	33
Totals	27	14	6	3		50	54

Number of Attacks: 59, Scoring Efficiency: 46%



Match Team Statistics

Estatística da partida por equipe / Statistiques du match par équipe

Match 12

ANG 27 - 25 MNE

(12 - 12) (15 - 13)

Referees: ALPAIDZE Viktoriia / BEREZKINA Tatiana (RUS)

ANG - Angola

Shots Distribution

Players

Goals / Shots

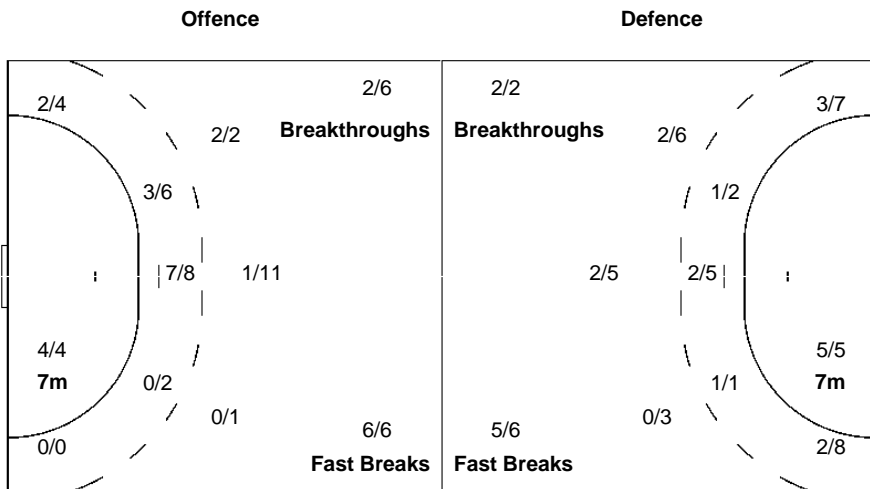
1 BARBOSA NMDP	6 MACHADO JJ	8 MONTEIRO LM	9 BERNARDO NM	10 KASSOMA AC	11 KIALA L	12 BRANCO CD
	0/1 0/1		1/1	1/1		
		1/1	0/1		1/1	
				3/4 0/1 1/2		
					2/2	
					2/2	

15 CARLOS AD	16 ALMEIDA TP	17 DOMBAXI WWB	21 CAZANGA MA	25 VENANCIO LDS	31 SANTOS JVD	90 GUIALO IEW
						1/1 2/2 3/3
0/1 0/1			1/1			1/2 0/1
3/3				2/3 0/1		
2-Missed		1-Missed	1-Missed1-Post			2-Missed2-Post

Team
Goals / Shots

2/3	2/3	5/6
3/6		3/6
8/10	0/2	4/5

6-Missed 3-Post



Goalkeepers
Saves / Shots

2/5	4/4	2/7
0/3	2/2	0/4
1/8	5/5	0/3

1 BARBOSA NMDP

12 BRANCO CD

1/2	1/1	0/2
0/1		
0/3	2/2	0/1

16 ALMEIDA TP

1/3	3/3	2/5
0/2	2/2	0/4
1/5	3/3	0/2



Match Team Statistics

Estatística da partida por equipe / Statistiques du match par équipe

Match 12

ANG 27 - 25 MNE

(12 - 12) (15 - 13)

Referees: ALPAIDZE Viktoriia / BEREZKINA Tatiana (RUS)

MNE - Montenegro

Players		Shots								Offence		Defence		Punishments			TP	
No.	Name	G/S	%	6m	Wing	9m	7m	FB	BT	AS	TO	ST	BS	YC	2Min	RC		BC
1	RAJCIC Marina									1	1							59:12
2	PETROVIC Radmila	0/3	0		0/2	0/1				1					1			39:42
4	RADICEVIC Jovanka	5/9	56	1/2	2/5			2/2			1							47:30
9	JAUKOVIC Durdina	0/2	0			0/2					1				1			17:37
10	BULATOVIC Andela	0/1	0		0/1					1	1			1				29:46
15	KLIKOVAC Andrea																	17:35
17	POPOVIC Bojana	3/6	50	0/1		1/3			2/2	1					1			21:17
22	BARJAKTAROVIC Sonja																	0:48
32	BULATOVIC Katarina	9/11	82	1/1		3/5	5/5			2	1				1			33:52
66	RAMUSOVIC Ema																	0:00
77	MEHMEDOVIĆ Majda	4/7	57		2/5			2/2			3							45:03
88	PAVICEVIC Biljana	2/4	50		1/2			1/2		1								15:00
90	RAICEVIC Milena	0/4	0	0/1		0/3				4	4	1						54:13
92	LAZOVIC Suzana	2/3	67	2/3						1				1				38:25
Bench/Team																		
Totals		25/50	50	4/8	5/15	4/14	5/5	5/6	2/2	12	12	1		2	4			

Goalkeepers		Total Shots		6m Shots		Wing Shots		9m Shots		7m Shots		Fast Breaks		Breakthroughs	
No.	Name	S/S	%	S/S	%	S/S	%	S/S	%	S/S	%	S/S	%	S/S	%
1	RAJCIC Marina	14/40	35	4/14	29	1/3	33	7/10	70	0/3	0	0/6	0	2/4	50
22	BARJAKTAROVIC Sonja	0/1	0							0/1	0				
Totals		14/41	34	4/14	29	1/3	33	7/10	70	0/4	0	0/6	0	2/4	50

Team Shots	Goals	Saves	Missed	Post	Blocked	Total	%
6m Shots	4	3	1			8	50
Wing Shots	5	7	1	2		15	33
9m Shots	4	6	3		1	14	29
7m Shots	5				N/A	5	100
Fast Breaks	5		1			6	83
Breakthroughs	2					2	100
Totals	25	16	6	2	1	50	50

Number of Attacks: 60, Scoring Efficiency: 42%



Match Team Statistics

Estatística da partida por equipe / Statistiques du match par équipe

Match 12

ANG 27 - 25 MNE

(12 - 12) (15 - 13)

Referees: ALPAIDZE Viktoriia / BEREZKINA Tatiana (RUS)

MNE - Montenegro

Shots Distribution

Players

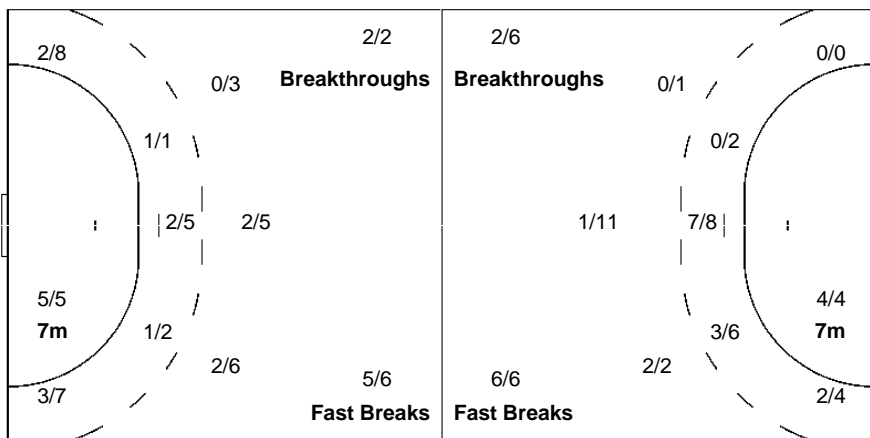
Goals / Shots

1 RAJCIC M	2 PETROVIC R	4 RADICEVIC J	9 JAUKOVIC D	10 BULATOVIC A	15 KLIKOVAC A	17 POPOVIC B
	0/1 0/1	0/1	0/1			0/1 1/1
		2/2 2/2	0/1			
	0/1	1/1		0/1		2/2 0/1
		2-Missed 1-Post	1-Missed			1-Blocked
22 BARJAKTAROVIC S	32 BULATOVIC K	66 RAMUSOVIC E	77 MEHMEDOVIC M	88 PAVICEVIC B	90 RAICEVIC M	92 LAZOVIC S
	2/3 3/4		0/1 1/1	0/1		1/1
			1/1 0/1			
	3/3 1/1		1/1 1/1		0/1 0/1	0/1
			1-Post	1-Missed	2-Missed	

Team
Goals / Shots

3/5	0/4	5/7
3/3	0/2	4/4
7/8	0/5	3/3
6-Missed	2-Post	1-Blocked

Offence



Defence

Goalkeepers
Saves / Shots

1/3	1/3	1/6
3/6		3/6
2/10	2/2	1/5

1 RAJCIC M

1/3	1/3	1/5
3/6		3/6
2/10	2/2	1/5

22 BARJAKTAROVIC S

		0/1

Legend:

%	Efficiency	2Min	2 Minute Suspensions	6m	6 metre Shots	7m	7 metre Shots	9m	9 metre Shots
AS	Assists	BS	Blocked Shots	BT	Breakthroughs	BC	Blue Cards	FB	Fast Breaks
G/S	Goals/Shots	N/A	Not Applicable	No.	Uniform Number	RC	Red Cards	S/S	Saves/Shots
ST	Steals	TO	Turnover	TP	Time Played	Wing	Wing Shots	YC	Yellow Cards