



# XXII Women's World Championships 2015

## Denmark



### Cumulative Statistics

#### POL - Poland After 9 matches

Players		MP	Shots								Offence		Defence		Penalties				TP
No.	Name		G/S	%	6m	Wing	9m	7m	FB	BT	AS	TF	ST	BS	YC	2Min	RC	DR	
3	KOBYLINSKA Monika	9	32/58	55	15/22	1/3	11/28		2/2	3/3	14	19			3	6			5:04:25
4	STACHOWSKA Monika	9	3/8	38	0/1			0/3	3/4		1	2	1	4	3	7	1		3:33:51
5	NIEDZWIEDZ Iwona	9	23/47	49	9/13	1/1	6/24		6/7	1/2	14	16	5	5	5	8			6:06:41
7	GADZINA Joanna	9	1/6	17		0/3			1/3										54:46
9	KOCELA Agnieszka	9	25/33	76	4/4	12/19			9/10		3	6	4		2	1			7:13:11
12	GAWLIK Weronika	9									1								4:48:50
14	KUDLACZ-GLOC Karolina	9	52/82	63	14/23	2/5	8/23	6/9	11/11	11/11	31	32	2	2	6	2			7:03:04
17	PIELIESZ Klaudia	9	4/15	27	0/4		2/8	2/3			2	3			1	2			50:35
18	ZYCH Aleksandra	9	3/10	30	0/3		1/5			2/2		10	1	1		2			46:55
19	LABUDA Aneta	9	6/19	32	1/2	3/13			2/4			3							3:42:24
25	ZALEWSKA Karolina	9	16/31	52	1/1	9/19		4/8	2/3		3	4	2						5:00:06
31	SADEJ Hanna	9	4/9	44	4/8			0/1			2	1				1			59:22
37	REPELEWSKA Kristina	1																	3:12
40	WYSOKINSKA Anna	9																	4:09:36
41	STASIAK Malgorzata	8	7/19	37	4/8	1/1	1/8		0/1	1/1	3	4			1				1:22:08
77	KULWINSKA Patrycja	9	20/28	71	20/28						2	6	1		2	1			3:32:12
89	ACHRUK Kinga	9	31/57	54	7/12	2/2	5/22	6/9	6/7	5/5	28	15	6	5	3	3			7:48:42
Bench/Team												2			6	1			
<b>Totals</b>			227/422	54	79/129	31/66	34/118	18/33	42/52	23/24	104	124	22	18	31	35	1		

Goalkeepers		Total Shots		6m Shots		Wing Shots		9m Shots		7m Shots		Fast Breaks		Breakthroughs	
No.	Name	S/S	%	S/S	%	S/S	%	S/S	%	S/S	%	S/S	%	S/S	%
12	GAWLIK Weronika	58/187	31	22/70	31	8/20	40	18/39	46	1/17	6	4/25	16	5/16	31
40	WYSOKINSKA Anna	53/162	33	9/33	27	7/15	47	23/54	43	5/20	25	7/23	30	2/17	12
<b>Totals</b>		111/350	32	31/103	30	15/35	43	41/94	44	6/37	16	11/48	23	7/33	21

Team Shots	Goals	Saves	Missed	Post	Blocked	Total	%
6m Shots	79	30	5	9	6	129	61
Wing Shots	31	28	4	3		66	47
9m Shots	34	35	17	11	21	118	29
7m Shots	18	6	3	6	N/A	33	55
Fast Breaks	42	6	2	2		52	81
Breakthroughs	23	1				24	96
<b>Totals</b>	227	106	31	31	27	422	54

Played		
PR	CUB	27 - 22
PR	SWE	30 - 31
PR	CHN	29 - 24
PR	ANG	29 - 27
PR	NED	20 - 31
R16	HUN	24 - 23
QF	RUS	21 - 20
SF	NED	25 - 30
BM	ROU	22 - 31

Number of Attacks: 511, Scoring Efficiency: 44%



# XXII Women's World Championships 2015

## Denmark



### Cumulative Statistics

**POL - Poland**  
After 9 matches

### Shots Distribution

#### Players

Goals / Shots

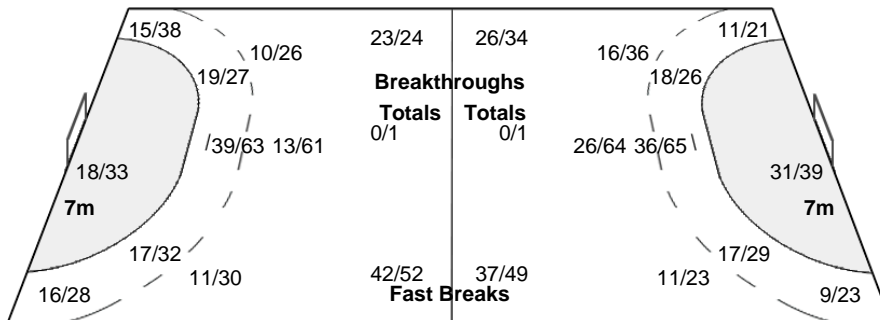
<b>3 KOBYLINSKA M</b> 4/6 3/5 6/6 3-Missed 3-Post	<b>4 STACHOWSKA M</b> 4/5 2/6 0/1 8-Blocked	<b>5 NIEDZWIEDZ I</b> 2/3 0/2 0/1 1-Missed	<b>7 GADZINA J</b> 1/1 1/3 3/4 1-Post	<b>9 KOCELA A</b> 2/2 4/6 3/5 4-Blocked	<b>12 GAWLIK W</b> 1/1 0/2 1/2 3-Missed	<b>14 KUDLACZ-GLOC K</b> 6/6 2/3 5/5 3-Missed	<b>17 PIELESZ K</b> 4/5 0/1 1/3 2-Missed 1-Post	<b>18 ZYCH A</b> 0/1 1/1 0/1 2-Blocked	<b>19 LABUDA A</b> 1/2 0/3 1/1 1-Missed 1-Post	<b>25 ZALEWSKA K</b> 0/1 0/1 2/2 3-Missed 3-Post	<b>31 SADEJ H</b> 1/1 1/3 5/9 4-Post	<b>37 REPELEWSKA K</b> 1/1 3/3 0/1 4-Post	<b>40 WYSOKINSKA A</b> 18/18 4/6 8/8 11-Missed 6-Post
<b>41 STASIAK M</b> 2/3 0/2 3/3 2-Missed	<b>77 KULWINSKA P</b> 1/1 1/2 9/12 1-Post	<b>89 ACHRUK K</b> 1/2 0/1 6/7 3-Missed 6-Post	<b>89 ACHRUK K</b> 2/3 1/3 11/12 6-Blocked	<b>89 ACHRUK K</b> 3/5 0/3 4/5 6-Blocked	<b>89 ACHRUK K</b> 5/5 4/5 4/5 6-Blocked								

#### Team Goals / Shots

23/31	6/12	44/49
15/39	2/12	15/32
51/63	17/23	54/71

31-Missed 31-Post 27-Blocked

#### Offence



#### Defence

#### Goalkeepers Saves / Shots

10/30	6/11	9/41
26/49	13/16	15/29
13/70	6/32	12/71

#### 12 GAWLIK W

5/15	3/7	6/21
10/24	10/12	7/15
4/36	4/20	8/36

#### 40 WYSOKINSKA A

5/14	3/4	3/20
16/25	3/4	8/14
9/34	2/12	4/35

<b>%</b> Efficiency	<b>2Min</b> 2 Minute Suspensions	<b>6m</b> 6-metre Shots	<b>7m</b> 7-metre Shots	<b>9m</b> 9-metre Shots
<b>AS</b> Assists	<b>BM</b> Bronze Medal Match	<b>BS</b> Blocked Shots	<b>BT</b> Breakthroughs	<b>FB</b> Fast Breaks
<b>G/S</b> Goals/Shots	<b>MP</b> Matches Played	<b>N/A</b> not applicable	<b>PR</b> Preliminary Round	<b>QF</b> Quarterfinal
<b>RC</b> Red Cards	<b>S/S</b> Saves/Shots	<b>SF</b> Semifinal	<b>ST</b> Steals	<b>TO (TF)</b> Turnovers (Technical Faults)
<b>TP</b> Time Played	<b>Wing</b> Wing Shots	<b>YC</b> Yellow Cards	<b>FTO</b> Fast Throw off	